

Inside: Foundation
Scholarship Recipients

THE DIAMOND

OF PSI UPSILON



Washington Arch

New York City

SUMMER 1987

From An Owl

For its first one hundred and thirty-seven years, Psi Upsilon had an extremely conservative approach to the expansion of the Fraternity. The *Annals* provide numerous accounts of chapters seeking to join Psi U for ten, twenty, thirty, and in some cases even forty years before the Convention and the then-required unanimous consent of the chapters was achieved. Many potential chapters at colleges and universities that today Psi U would be proud to call home were lost during that period.

Psi U, however, made the transition to a more reasonable expansion philosophy beginning in 1970. Under the leadership of President Jerry Brush and Executive Director Earl Fretz, the Fraternity established two new chapters in the fall of 1970 — the Nu Alpha at Washington and Lee and the Gamma Tau at Georgia Tech. These two chapters were the first in nearly twenty-one years, the Epsilon Omega at Northwestern (founded in 1949) being the baby chapter during that period (not including the fateful Theta Epsilon at the University of Southern California, which existed in the mid-1950's for a short time).

Since 1970, Psi U has indeed flourished. Its entry into the South continued in 1973 with the addition of the Chi Delta Chapter at Duke University. Subsequent to that fine event, Psi U inaugurated the Field Director program and in 1978, under the leadership of Mike Huffman (the Field Director at the time), the Fraternity began a reactivation program to reestablish a number of chapters lost in the 1960's and 1970's. The reactivation of the Rho in 1978 was the first of these efforts. This successful effort was followed by reactivation of two of our Canadian chapters, the Epsilon Phi at McGill University in Montreal (1979) and the Nu at the University of Toronto (1980).

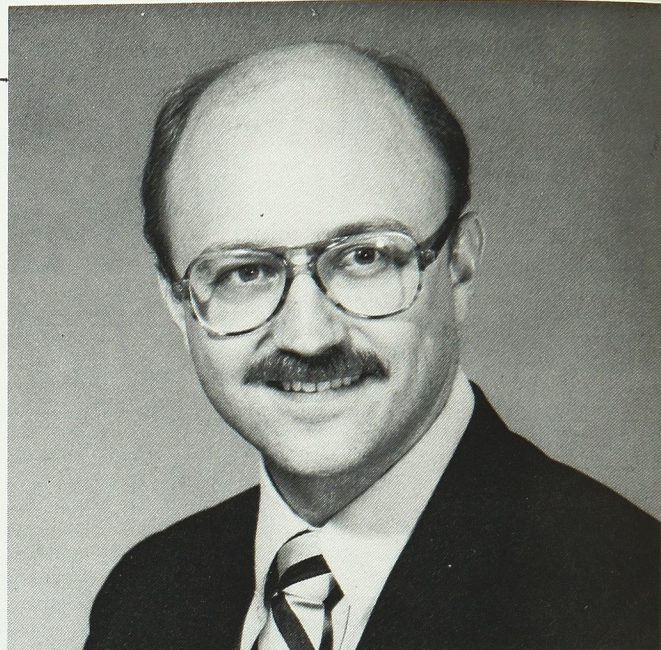
In the early 1980's, several additional opportunities to add chapters presented themselves, the first at Tufts University with the Zeta Tau Chapter (1981). The early 1980's also saw the first Provisional Chapter of Psi Upsilon established at Rensselaer Polytechnic Institute in Troy, New York and then at the College of William and Mary in Williamsburg, Virginia. With these came the opportunity for Psi U to fully implement some Guidelines Toward Acceptance of Chapters into Psi Upsilon that had originally been adopted in 1978. Provisional Chapter status gave us an opportunity to help fledgling chapters create the support systems and educational programs that would allow them to achieve full chapter status. The Epsilon Iota Chapter at R.P.I. became a full chapter in 1982 and the Phi Beta at William and Mary in 1984.

Then, in 1986, two more reactivations occurred at the Sigma Chapter at Brown University and the Epsilon Chapter at the University of California at Berkeley. Most recently, the Executive Council approved the establishment of the Kappa Phi Provisional Chapter at Pennsylvania State University (April, 1987).

This history describes the addition of *thirteen* new or reactivated chapters during the past seventeen years, or almost one new chapter per year. Not counted in this figure was the inactivation and subsequent reactivation of the Chi Chapter at Cornell University during the early 1980's, thus bringing our total of new or reactivated chapters to *fourteen*.

Today, as a result of these superb efforts, Psi U is stronger than it has ever been with thirty-three active or provisional chapters and a professional staff that can reasonably provide support to those chapters. What we must address today is what our philosophy toward expansion will be during the next few years, perhaps for the next decade.

We face a situation today in which much of our effort must be devoted to establishing effective alumni support for approximately 40% of our existing chapters, i.e., those



that have been established or reactivated during the last seventeen years. These efforts to insure the continued viability of our new chapters are in addition to those that must always be expended to respond to crises and provide support for and assistance to the older, more established chapters that run through the traditional fraternity cycles of feast and famine in recruitment and financial efforts, strength and overconfidence and eventually weakness in campus and interfraternity involvement as well as alumni relations.

In short, we have much to do to make the thirty-three existing chapters as strong as possible. Psi U's expansion philosophy has not been one shared by some other fraternities of looking for a "net" gain of chapters during any one period, i.e., add several chapters and lose less than that number. Psi U has believed strongly that we add chapters carefully with the full intention of keeping those chapters permanently. In order to do that, we must, of course, devote the time necessary to assure the stability and continued growth of these chapters. In spite of these best efforts, we have also lost three chapters during the last seventeen years — the Nu Alpha (1975), the Chi (early 1980's returning in 1984), and the Rho (1987 and only temporarily we hope).

The issue facing us today is whether we can reasonably continue the expansion philosophy of the last seventeen years without additional resources to meet our existing obligations *and* continue to expand. We have been extraordinarily fortunate in the opportunities that have been presented to us and in the chapters that have developed as a result. This expansion of Psi Upsilon, however, has largely been a matter of our *responding* to opportunities presented to us rather than a *planned* effort on our part to expand using specific criteria and actively identifying and seeking opportunities that are best suited to Psi Upsilon's resources and philosophy.

We are fast approaching the time when we must consolidate the gains of almost two decades and carefully define the criteria for future expansion. We will address this topic at the upcoming Convention in New York City with the Delta Chapter. Any thoughts or suggestions that you may have would be appreciated. Please feel free to bring them to my personal attention. In the meantime, this is a subtle way of saying join us in New York in August!

Yours in the Bonds,

William R. Robie

William R. Robie

President

Epsilon Omega '66



Psi Upsilon Fraternity

Founded November 24, 1833 at
Union College in Schenectady, NY

The Executive Council of Psi Upsilon

Officers

President: William R. Robie, Epsilon Omega '66,
5201 Leesburg Pike, Ste. 1501, Falls Church, VA
22041

Vice President: David A. B. Brown, Epsilon Phi '66,
31 Everett Ave., Winchester, MA 01890

Acting Secretary: John K. Menzies, Pi '41, 1211
Cumberland Ave., Syracuse, NY 13210

Treasurer: Charles M. Hall, Nu Alpha '71, 900 Pharr
Center, 550 Pharr Road., N.E., Atlanta GA 30305

Executive Vice President (until June 30, 1987)

Henry B. Poor, Gamma '39, 614 Andover Rd., New-
town Square, PA 19073

Alumni Term Members

Richard D. Dadey, Jr., Pi '80, 52 St. Germain St.,
Apt. 3, Boston, MA 02115

James E. Heerin, Jr., Tau '58, 3011 Sycamore Rd.,
Huntingdon Valley, PA 19006

Charles S. P. Hodge, Gamma '68, 1131 S. Forest
Dr., Arlington, VA 22204

Michael L. Huffman, Zeta '77, 644 W. Roscoe St.,
Chicago, IL 60657

Robert L. Kaiser, Zeta '39, 315 Blunt Alumni Cen-
ter, Dartmouth College, Hanover, NH 03755

Andrew M. Kerstein, Delta '76, 163 Grant Ave.,
New Providence, NJ 07974

Life Member

Jerome W. Brush, Jr., Delta Delta '39, 200 E. 66th
St., New York, NY 10021

Honorary Life Members

Harrison P. Bridge, Beta Beta '61, 40 Yarmouth Rd.,
Chestnut Hill, MA 02167

Gardner A. Callanen, Psi '29, 800 Charlotte St., Utica,
NY 13501

A. Durston Dodge, Theta '44, 486 High St., Victor,
NY 14564

Edward S. Fries, Eta '45, 74 Trinity Pl., New York,
NY 10006

John R. Parker, Omicron '28, 307 Woodlawn Rd.,
Lincoln, IL 62656

Roland B. Winsor, Epsilon Phi '27, #1207-415
Greenview Ave., Ottawa, ON K2B 8G5, Canada

Alumni Advisory Board

Richard A. Horstmann, Pi '57, 184 Jasper St., Syr-
acuse, NY 13203

Undergraduate Advisory Board

Russell J. Maxwell, Pi '88, 416 Kimber Rd., Sya-
racuse, NY 13224

Michael R. Loew, Chi '88, R.R. 2, Windy Fields,
New Market, ON L3Y 4V9 Canada

International Headquarters

Two Station Square, Paoli, PA 19301
(215) 647-4830

Acting Executive Director: Kathleen M. McGlone,
Lambda '82H

Director of Chapter Services: Thomas L. Phillips,
Omicron '85

Field Directors: Kenan Z. Bakirci, Epsilon Nu '87
Peter J. Enko, Phi Beta '87

Correspondence Secretary: Anne Louise Rice

Financial Secretary: Marianne M. Fitzpatrick

THE DIAMOND

OF PSI Upsilon

In This Issue _____ Summer 1987

Cover

4

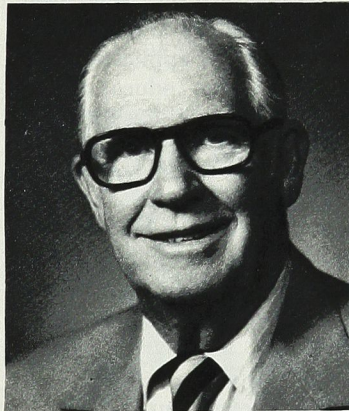


One of the most famous landmarks of Greenwich Village is Washington Arch, pictured on the cover. Designed by Stanford White and built in 1889 to commemorate the 100th anniversary of Washington's inauguration, the Arch dominates Washington Square Park. This year's Convention participants will have an opportunity to witness firsthand this and other historic and cultural sites as we travel to New York University for the 144th Convention. For more information on this year's event, hosted by the Delta Chapter in celebration of its 150th anniversary, please turn to page 4.

Features

1987 Convention	4
Two New Field Directors	
Join Fraternity Staff	7
J. Russell McShane, Delta '32	
1909-1987	8
How Much Is Too Much?	9
Class of 1987	10
36 Scholarships Awarded	
for 1987-88	15

8



Departments

Psi U Hoots	2
Executive Council	
Meetings	12
Alumni News and Notes	13

The DIAMOND of Psi Upsilon

An Educational Journal
First Published in 1878

VOLUME LXXIII

NUMBER 3

Editor KATHLEEN M. MCGLONE, Lambda '82H
Associate Editor THOMAS L. PHILLIPS, Omicron '85

Executive, Publication and Editorial Offices: Two Station Square, Paoli, Pennsylvania 19301. Telephone 215-647-4830. Life subscription, \$20 (included in membership fee); by subscription \$1.00 per year; single copies 50 cents.

THE DIAMOND (USPS 156-460) is published quarterly (Autumn, Winter, Spring and Summer) by the Psi Upsilon Fraternity. Second-class postage paid at Paoli, Pennsylvania and additional mailing offices. Printed by The Ovid Bell Press, Inc., Fulton, Missouri. POSTMASTER: Send address changes to Psi Upsilon Fraternity, Two Station Square, Paoli, PA 19301.

The Official Publication of Psi Upsilon Fraternity



PSI U HOOTS

Fraternity News From Across the Continent



“HEAD TO HEAD” COMPETITION (OR A REAL HOOT!)

(Paoli, PA) Brother Ed Marinaro, Chi '72, has entered the beer business with a series of advertisements for Miller Beer. Surely Brother Marinaro feels a bit of guilt in plugging the competitor of Coors, which is headed up by Jeffrey H. Coors, Chi '67, and Peter H. Coors, Chi '69. Also involved in this fraternal competition is William Hoot, Upsilon '40, President of Genesee Inc., a brand familiar in Upstate New York.

A THETA THETA IS CHEERFUL, THRIFTY, BRAVE . . .

(Seattle, WA) During Field Director Tom Phillips last visit to the University of Washington, he discovered that the Chapter was full of Eagle Scouts — more than a dozen of them. Less than 2% of all Scouts ever attain this level. Included in this select group at the Theta Theta is the Outstanding Scout in the United States for 1985.

CLASSIC MISTAKE

(Paoli, PA) John H. Walker, Theta Theta '36, writes: “*Shame!!* Your article in the (DIAMOND) Winter edition describing the Pi Chapter House mentions ‘paired Doric columns symbolizing Greek architecture.’ Even a Greek child would recognize Ionic not Doric capitals surmount the columns. Go back to Liberal Arts Class 101.”

Editors' Note: Mea culpa.

COLLEGE COST CRUNCH

(New York, NY) The May 18, 1987 issue of *Newsweek* examined the rapid rise in the cost of higher education today. With 20 of Psi U's 33 Chapters located at schools which are among the most expensive in their class (either private or public), this is particularly disturbing. Results of a recent study by the American Council on Education reveal that college costs in the last decade have risen by well over 200%, far outpacing inflation for the same period. The result of this has been that the cost of sending a student to a private college may now absorb 20% of a middle-class family's income.

This rise in costs can be attributed to

several factors. During the 70's, faculty salary increases lagged behind the inflation rate, a problem which is now being addressed. There have been accusations that colleges have lost sight of their mission; money is spent for purposes beyond the education of their students. Endowments are not always used to increase the accessibility of quality education to middle and low-income families. Princeton University, with an endowment of \$2.1 billion, charges tuition and fees of around \$17,000. The endowment is used for development of facilities and investments, rather than student aid.

Public education has experienced different effects from this rapid rise in costs. Tuitions have dramatically increased, up 250% since 1972 at the University of Michigan. The public schools at which Psi U is found have actually benefitted from this trend in terms of number and quality of applicants. As prices have risen, schools such as Berkeley and Michigan have been swamped by applications because of the “Ivy League” education they provide at public-school prices.

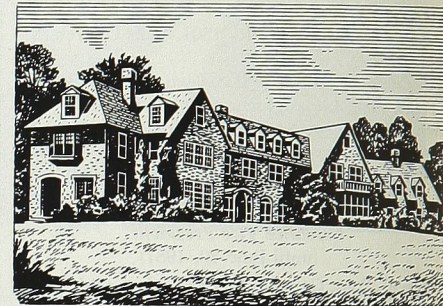
As costs increase, financial hardships are likely to continue. With the Reagan administration's emphasis on student loans rather than direct aid, the accessibility of quality education may become more and more difficult for the average family. The day is approaching when high-quality education is no longer a good investment.

CONVENTION LOGO WINNER

(Paoli, PA) Congratulations to Brother John B. Dunn, Chi '89, whose logo has been chosen to represent this year's Convention with the Delta Chapter in New York City. John's design, which depicts an owl surveying the “Big Apple,” will be featured on many of the materials used at the 144th Convention. It appears on page 5 of this issue of *THE DIAMOND*, where further information about the Convention is available.

DELTA DELTA DONATION

(Williamstown, MA) When Williams College abolished fraternities in 1963, the Psi Upsilon alumni of the Delta Delta Chapter did their utmost to reverse the decision of the administration and trust-



Former Delta Delta Chapter house, now a dormitory at Williams College.

ees of the College. They were unsuccessful in their efforts and, in 1966, the Chapter house and 8½ acres of land it sat on were taken over by the College for a confiscatory sum — the amount of The Delta Delta Society, Inc.'s indebtedness to its mortgage and bond holders. This basis of transfer was the same for all 15 fraternities which owned properties on the campus.

Since that time The Delta Delta Society, Inc. has been making scholarship grants to children of Delta Delta's attending Williams College. The last such grant was made in the amount of \$1,000 for the 1986-87 college year.

At its last annual meeting in October, the Delta Delta Society voted to turn its assets over to The Psi Upsilon Foundation, Inc.; in January, at a special meeting of the Foundation, an agreement was signed to effect this distribution. In return for these assets the Foundation will award a scholarship grant in the name of the “Delta Delta Chapter of Psi Upsilon at Williams College,” and will each year give a grant or grants to sons or daughters of Delta Delta alumni upon their application and evaluation thereof by the Foundation in a manner consistent with all other applicants. The amount of these awards will approximate the income associated with the value of the funds transferred to the Foundation.

If there are no grants awarded to the son or daughter of a Delta Delta alumnus, any other Foundation grant recipient may be given the named award.

Editors' Note: Many, many thanks to Jerome W. Brush, Jr., Delta Delta '39, for preparing the above information for publication.

NEW UAB BEGINS TERM

(Troy, NY) The Undergraduate Advisory Board held its first meeting of the year on April 10-12 in Troy, New York. Held in conjunction with a meeting of the Executive Council, the UAB had a unique opportunity to see how Psi U operates at the international level. In addition to discussing the upcoming Convention and their role in it, the UAB elected a chairman and vice chairman, who will serve as voting members of the Executive Council for 1987-88. These officers, and the rest of the Board, are as follows:

Russell J. Maxwell, Pi '88, Chairman
 Michael R. Loew, Chi '88, Vice Chairman
 Turner F. Bluechel, Theta Theta '88
 Brent E. Byer, Epsilon Phi '88
 Eric H. Rothstein, Epsilon Nu '88
 Samuel J. Tinaglia, Omega '89
 Terrence J. Turner, Beta Beta '89
 Gregory M. Vaudreuil, Chi Delta '89
 Michael D. Weiner, Lambda '88

LAMBDA FACELIFT

(New York, NY) After a long wait, the Lambda Chapter house is scheduled to receive a complete renovation. Following a fire at another fraternity on campus, the University decided that it was time to act. After discussions concerning the ultimate layout of the building, work was begun. The undergraduates were given new housing, and work was started almost immediately. The house had been, at press time, completely gutted prior to its remodeling. It is hoped that the work will be completed in time for the undergraduates to occupy the house next fall.

KAPPA PHI PROVISIONAL CHAPTER

(State College, PA) Saturday, April 4, saw the Executive Council welcome a local fraternity on the Pennsylvania State University campus, Delta Kappa Phi, as the Kappa Phi Provisional Chapter of Psi Upsilon. The ceremony, in which the men of Delta Kappa Phi were pledged to Psi Upsilon, was presided over by the President of the Executive Council, the Hon. William R. Robie. In attendance were undergraduate brothers from several Chapters, some coming from as far away as Brown University in Providence, Rhode Island. The process of moving from provisional to full Chapter status normally takes from two to three years and requires a three-fourths affirmative vote of the undergraduate Chapters and alumni associations.



Kappa Phi Pledging Ceremony, April 4, 1987, State College, Pennsylvania.

1987 DIVISIONAL CONFERENCES
 (Montreal, PQ; Bethlehem, PA; Champaign, IL; Vancouver, BC) Psi U's from across the continent once again braved the elements to attend this winter's Divisional Leadership Conferences. Held throughout the month of February and into early March, this year's Conferences were truly an international affair, with

two in the United States and two in Canada. Hosted by the Epsilon Phi (McGill University in Montreal), Eta (Lehigh University in Bethlehem, PA), Omicron (University of Illinois in Champaign, IL), and Zeta Zeta (the University of British Columbia in Vancouver), these meetings covered such topics as risk management, alcohol liability, and hazing.



Participants in the 1987 Regional Conference hosted by the Zeta Zeta Chapter at the University of British Columbia included: (front row, l to r) Turner Bluechel, Theta Theta '88; Dan Saliken, Zeta Zeta '90; Chanler Sparler, Epsilon '88; Dennis Bralic, Zeta Zeta '89; Tom Phillips, Omicron '85; (back row, l to r) Ed Ruckle, Zeta Zeta '91; Duncan Miller, Zeta Zeta '87; Ivan Friedman, Epsilon '90; Dan Brady, Theta Theta '89; Bill Borkowski, Theta Theta '88; Eugenio Pugliese, Zeta Zeta '90; Matt Clary, Theta Theta '85, and Erik Huitink, Zeta Zeta '87.

1987 CONVENTION

August 26-28, 1987. Mark the dates on your calendar, so that you can join us for the 144th Convention, held this year in New York City with the Delta Chapter at New York University in commemoration of the founding of Psi Upsilon's second chapter 150 years ago. Come celebrate this momentous event and experience what a Psi U Convention is all about.

And what is it all about? It starts with business, for the real purpose of a Convention is to plot the course of the Fraternity for the coming year. Standing committees will ponder the issues and bring their findings to general meetings for a vote of the whole. Seminars and workshops will be interspersed, with special presentations and guest speakers scheduled, as well.

But a Convention is not just

business. It is the social interaction which is fostered by such events as this year's barbecue on Wednesday evening in Gould Plaza on the NYU campus, or Thursday's New York Metropolitan Association luncheon in the Ben Snow dining room of Bobst Library. The most meaningful and enjoyable of the Convention's social events is usually the closing banquet, which this year will take place on Friday evening at the Halloran House at 49th Street and Lexington Avenue. Preceded by a cocktail reception and followed by a festive dessert reception, the banquet should find the Psi U spirit of camaraderie at its highest.

What else? It is the opportunity to live and work for a few days in New York's unique Greenwich Village, whose artistic flavor and colorful inhabitants are

August

26 Wednesday

Executive Council meeting
Registration
Foundation Directors meeting
Orientation and general meeting I
Barbecue

27 Thursday

Committee meetings
Leadership workshops
Metropolitan Association lunch
Convention photograph
Special presentation
General meeting II
Evening to see the city



in vivid contrast to the high pressure atmosphere of downtown Manhattan. This Convention also will provide a chance on Thursday evening for participants to explore the rest of the "Big Apple" — downtown, Little Italy, Central Park, midtown, Chinatown, uptown — the choices are endless!

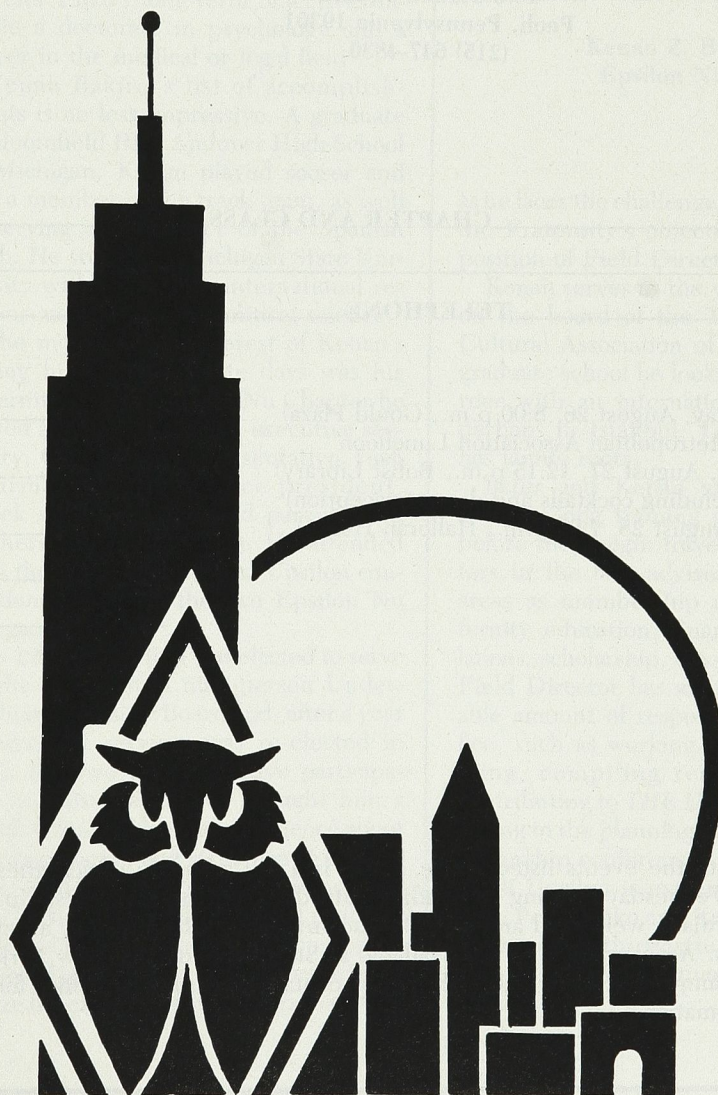
A Convention is a time to make or renew friendships. It is a time to share and grow. It is a time for old and young to work and play together. It is a time of brotherhood.

If you are interested in attending the 144th Convention, please complete and return the form on the next page or contact the Fraternity office at 215-647-4830.

Many, many thanks to John B. Dunn, Chi '88, for the 144th Convention logo design which appears on this page.

28 Friday

Committee meetings
Leadership workshops
General meeting III
Memorial ceremony
Cocktail reception
Convention banquet
Dessert reception



144TH CONVENTION OF THE PSI UPSILON FRATERNITY

Registration Form

Please complete and return this form with full payment by August 15, 1987.
Checks should be made payable to "Psi Upsilon Convention." Mail to:

**Psi Upsilon Fraternity
Two Station Square
Paoli, Pennsylvania 19301
(215) 647-4830**

NAME _____ CHAPTER AND CLASS _____

ADDRESS _____

TELEPHONE _____

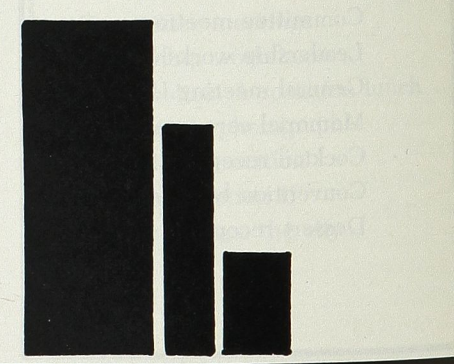
CHARGES

- Barbecue
(Wednesday, August 26, 8:00 p.m., Gould Plaza) \$15 _____
- New York Metropolitan Association Luncheon
(Thursday, August 27, 12:15 p.m., Bobst Library) \$25 _____
- Banquet (including cocktails and dessert reception)
(Friday, August 28, 7:00 p.m., Halloran House) \$60 _____

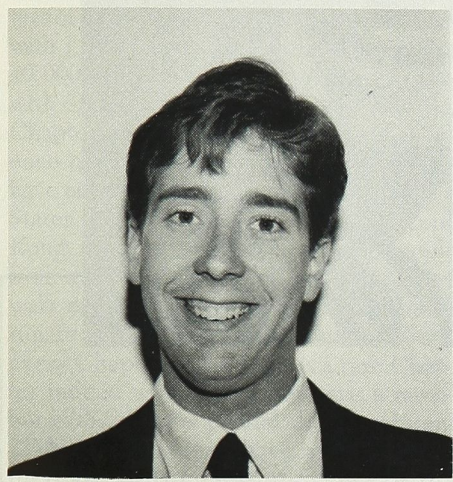
TOTAL _____

PAYMENT _____

In addition to the events listed above, there is a full schedule of activities beginning Wednesday evening and ending Saturday morning. All in Psi Upsilon are cordially welcomed and heartily encouraged to attend any or all of these events. Accommodations are available at Stern Hall on the New York University campus for those who wish. Please contact the Fraternity office for further information.



Two New Field Directors Join Fraternity Staff



Peter J. Enko
Phi Beta '87

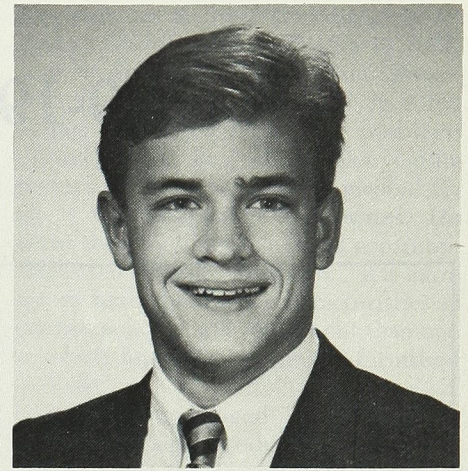
But Peter Enko's greatest contribution during his undergraduate days have been the important role he played in the establishment of the Phi Beta Chapter. When he was pledged to the young, floundering group in the fall of 1983, he brought with him a fresh approach, an abundance of enthusiasm, and remarkably strong organizational skills. Under his leadership the provisional chapter grew in both strength and numbers and that spring was installed as Psi Upsilon's thirty-eighth chapter. In addition to serving as president of the chapter, Peter also held the office of treasurer and was a delegate to the 1984 Psi Upsilon convention.

Peter Enko's long-term objectives include a doctorate in psychology and a career in the medical or legal field.

Kenan Bakirci's list of accomplishments is no less impressive. A graduate of Bloomfield Hills Andover High School in Michigan, Kenan played soccer and was a member of the track team, as well as serving as an officer of the Spanish Club. He studied at Michigan State University with a major in international relations and a minor in political science.

The most abiding interest of Kenan's during his undergraduate days was his fraternity. At the Epsilon Nu Chapter he served as social chairman, executive secretary, Greek week representative, rush chairman, executive vice president, Greek sing chairman, and parents' and mothers' day co-chairman. He attended both the 1985 and 1986 Psi Upsilon conventions as one of the two Epsilon Nu delegates.

In 1985 Kenan first was elected to serve on the Fraternity's nine-person Undergraduate Advisory Board and, after a year of excellent service, was re-elected in 1986. His two years of active participation on this board have brought him a wealth of knowledge and experience about the organization and structure of Psi Upsilon. And the Fraternity has benefitted from both his insightful grasp of problem areas and his concrete suggestions for solutions. He will have the opportunity to utilize his exceptional interpersonal skills



Kenan Z. Bakirci
Epsilon Nu '87

as he faces the challenge of accomplishing the Fraternity's objectives through the position of Field Director.

Kenan serves as the youngest director on the board of the Turkish-American Cultural Association of Michigan. After graduate school he looks forward to a career with an international corporation, perhaps in Istanbul, Turkey, where he has family roots.

Peter and Kenan are undergoing a summer-long training program in Paoli before they begin traveling to the chapters in the fall, advising them in such areas as membership recruitment, fraternity education, finances, alumni relations, scholarship, etc. In addition, each Field Director has assumed a considerable amount of responsibility in the office, such as working on new programming, compiling resource material, contributing to *THE DIAMOND*, and assisting in the planning of conventions and leadership conferences.

Psi Upsilon is extremely fortunate to have Peter Enko and Kenan Bakirci, two talented, enthusiastic, and dedicated men, as representatives of our Fraternity.

The Executive Council is pleased to announce the appointment of Peter J. Enko, Phi Beta '87, and Kenan Z. Bakirci, Epsilon Nu '87, as Psi Upsilon's Field Directors for 1987-88. Each brings to the position his unique talents and an impressive list of achievements.

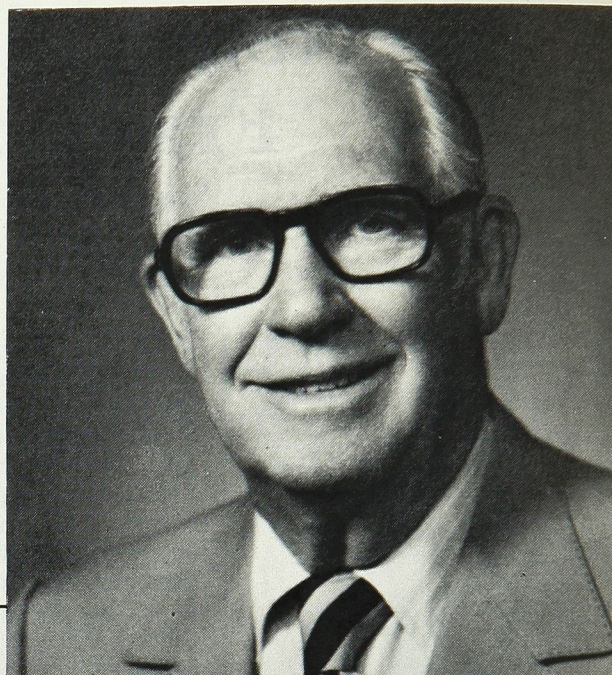
A resident of Easton, Connecticut, Peter Enko attended Joel Barlow High School, where he was a member of the National Honor Society and a tri-captain of the varsity soccer team. His excellent academic performance earned him the honor of serving as valedictorian at his graduation ceremonies.

At the College of William and Mary in Williamsburg, Virginia, Peter continued to excel. He spent a semester as a visiting student at Cambridge University (with a 4.0 GPA) on his way to earning a degree in psychology. At William and Mary he served as a Resident Assistant, on the Advisory Board to the Director of Residence Hall Life, on the Dorm Council, as a coach of youth soccer, as an intern at a Montessori school, and as a Colonial Williamsburg cricketer. He also was a member of Phi Eta Sigma, Alpha Lambda Delta, and Psi Chi, all honor fraternities.

J. Russell McShane

Delta '32

1909-1987



RESOLUTION

WHEREAS James Russell McShane, a member of the Delta Chapter of Psi Upsilon Fraternity, who graduated from New York University in 1932, was taken from our midst on April 19, 1987, and

WHEREAS Brother McShane commenced fifty-nine years of faithful service to his Chapter and his Fraternity as leader of his freshman delegation, becoming president and treasurer in his senior year, while being elected class president in his sophomore and junior years, president of the student council as a senior, and captain of the swimming team, and

WHEREAS Brother McShane embarked upon a successful business career after college, principally in the packaging industry, serving for twenty-nine years with C. G. Winans Co. of Newark, New Jersey, leaving as president in 1968 to found and head Baker-McShane Packaging Co., and

WHEREAS Brother McShane's career leadership was recognized by his election as president of the Sales Executive Club of New Jersey and by his founding of the Garden State Paper Trade Association, and

WHEREAS Brother McShane's gratitude for the undergraduate scholarship assistance provided him by New York University found expression in extensive fund-raising activities for his Alma Mater, leading to his becoming president of the New York Heights Alumni Association and his being presented with the Alumni Meritorious Service Award, and

WHEREAS Brother McShane's never-flagging dedication to the Delta singled him out as the keystone of the Chapter for a quarter of a century, especially evident in his determination that the Delta would survive the campus move from University Heights to Washington Square in the 1970's, and

WHEREAS Brother McShane's outstanding service to the Fraternity at large began with his election to the Executive Council in 1970 and progressed to his serving as its able sixteenth president from 1979 to 1984, to which accomplishment were added eleven years as a director of The Psi Upsilon Foundation, Inc., the co-chairmanship of the Sesquicentennial Fund campaign in 1983-84, and many years as the driving force of the New York Metropolitan Association, and

WHEREAS Brother McShane infused all that he undertook with enthusiasm, optimism, perseverance, tireless energy, loyalty, and integrity, leaving all that he touched better than he had found it, therefore

BE IT RESOLVED: That the Executive Council of Psi Upsilon records its deep sorrow upon the loss of a twentieth century giant in the Fraternity and renews its resolve to sustain and advance the lofty principles which governed the life of James Russell McShane, and

BE IT FURTHER RESOLVED: That this resolution shall be spread upon the minutes of the Executive Council meeting on June 19, 1987, and

BE IT FURTHER RESOLVED: That this resolution shall be conveyed in appropriate manner to Evelyn Reeder McShane, his widow, and his sons, Richard, David, and Donald, comprising the family to whom he was so devoted and of whom he was justifiably proud.

HOW MUCH IS TOO MUCH?

A Perspective on Alcohol Abuse

By David H. Rank, Omicron '86

In the course of the past year, I have visited over three-quarters of the Chapters of Psi Upsilon. I have visited colleges with 1,400 students and universities with 40,000; I have spent time at Chapters with 15 brothers and Chapters with 75; Chapters full of engineers or political science majors, rugby players and poets. I have talked with brothers from the United States, Canada, Sweden, Mexico, Hong Kong, and the rest of the world; people from every type of background and every walk of life. There has been one unfortunate denominator common to nearly every Chapter of Psi U. It is a rare Chapter indeed which does not have a member with a serious alcohol abuse problem.

The past few years have seen a marked increase in the consciousness of the American people concerning the issue of substance abuse. The tragic death of University of Maryland basketball star (and future Boston Celtic) Len Bias epitomized the dangers of drug abuse and the media's perception of the problem. While illegal drugs have been, and still are, major problems on college campuses, the current flurry of anti-drug attention tends to overlook the most severe substance abuse problem on college and university campuses today. The problems caused by the abuse of alcohol among college students are far and away the greatest threat to the health and well being of collegians today.

"In terms of the negative consequences of the problems that occur on campus, there's no question those related to the use of alcohol far exceed those related to the use of other drugs," states Gerardo Gonzalez, a long-time educator on alcohol issues. He adds, "When you look at academic failures, damage, disciplinary problems, failing grades, you find these problems are far and away related to the use of alcohol." Says Michael Shaver, director of the University of South Carolina Drug Education Program, "I think it would be a grave mistake to take the attention away from alcohol and toward other drugs."

Surveys conducted over the last few years indicate that serious alcohol use among students remains at high levels and that as many as ninety percent of all students are drinkers. This figure is probably even higher among fraternity members. In a survey conducted at Arizona

State University, nearly every student polled had tried alcohol at least once (96%), as compared to marijuana (56% of those surveyed) and cocaine (27%). The survey goes on to say that 76% of the students had consumed alcohol within the past month, compared to marijuana and cocaine at 15% and 8% respectively. A similar survey at Indiana University reported that 21% of the students reported themselves as "heavy drinkers," consuming six or more drinks in a row at least once a week.



Coupled with a decline in the popularity of illegal drugs has been a general increase in price and a drop in availability. This makes alcohol the most accessible drug available on most campuses. Unfortunately, with the general rise in the drinking age across the United States, drinking has moved from the bars into the fraternities. This erroneous perception of fraternities as places to drink, whether one is of age or not, is prevalent. As one recent Psi U alumnus states, "Drinking is never questioned. Drunkenness is rarely criticized. Even when we develop a routine of waking up every Saturday, popping four aspirin and struggling through the day, drinking is taken for granted." A mentality that drinking is acceptable at fraternities exists in the public eye and, unfortunately, in many

fraternity Chapters as well.

Alcohol is not new to fraternity life. The archives at the International headquarters hold a letter, written in 1912, sent by the Beta Chapter (Yale University) to the Executive Council. In it the author complains about the problems caused by the host of the Convention being forced to provide the alcohol for all of the Convention's delegates. He notes that, by limiting alcohol consumption at the annual Convention, "it is more apt to have the Psi U characteristics of gentlemanliness and refinement than one at which liquor is continually furnished in bulk."

Times have changed. Today the main emphasis of alcohol education in our fraternity is not the preservation of gentlemanly behavior, but the mere preservation of our organization. Risk management, especially in the area of alcohol liability, has become the overriding concern of almost everyone involved in the fraternity world. Fraternities' misdeeds no longer just threaten their reputations; they now threaten the very existence of the fraternity.

Why has alcohol abuse become such an everyday facet of fraternity life, so entrenched in the image of the fraternity of the eighties? For many years, colleges assumed the position of "in loco parentis" toward their students. Any violation of law (and often any moral transgression) was dealt with by college authorities. As students began to demand and receive more freedom, these policies were gradually relaxed, until many schools assumed absolutely no responsibility for the behavior of their students. As alcohol became more prevalent and above-board on campuses, fraternities often served as natural centers for social activity. The all-campus "blow-out" often associated with fraternities is, in large part, a result of this. As the drinking age has gradually risen across the United States, fraternities have kept this image and these practices. At many schools, fraternities exist as little more than campus social areas, seemingly exempt from state and national alcohol regulations.

For several reasons, not the least among them the legal liability involved, colleges and universities have once again begun to exert their influence over the extra-

(Continued on page 14)

Stuart M. Abrahamson, Epsilon Omega, Pilot School, United States Navy; **Terence Alexander**, Tau, Para-legal; **Jeffrey**
Omicron, Consulting Actuary, Mercer, Medinger, Hansen; **Richard C. Atherton**, Theta Theta, Business Administration;
Steven R. Barr, Epsilon Nu-Phi, Banking, Marine Bank; **Bryan D. Basham**, Epsilon Iota, Computer Science, National
Behan, Pi, Economics; **Blake A. Benson**, Gamma, Research Associate, Arthur D. Little, Inc.; **Christopher H. Berg**, Eps
Omicron, Finance; **Timothy E. Bixby**, Zeta, Advertising, Leo Burnett Agency; **James R. Box**, Phi Beta, Writing; **Philip**
Belgium; **Michael P. Brousseau**, Epsilon Omega, Medical School; **Christopher A. Bruno**, Phi Beta, Business Consulting;
Lakehurst Naval Air Engineering Center; **Robert J. Cadranell, II**, Kappa, Writing; **Oliver T. Carr**, Beta Beta; **Christop**
H. Choi, Gamma, Financial Analyst, Bankers Trust; **Daniel L. Chun**, Epsilon Nu; **Frank J. Chut, Jr.**, Chi Delta, Law
John J. Clarke, Jr., Zeta, Law School, University of Virginia; **Scott G. Cobine**, Epsilon Nu; **Douglas A. Collister**, Zeta
United States Army; **Frank K. Costigan**, Kappa Phi Provisional, Aerospace Engineering; **William J. Craddock**, Kappa
Philosophy; **Charles W. Crockett**, Tau, Investment Banker, Goldman Sachs; **Ross W. Crotinger**, Omicron, Investment
Political Science; **Jeffrey F. Curley**, Beta Beta; **Glen Davies**, Nu, International Relations; **Hugh D. Davis**, Kappa, Sales
Dehan, Zeta, Associate Consultant, Bain & Co.; **Ellen Delea**, Kappa, Art; **Vincent Di Nunno**, Gamma Tau, Industrial En
Owner, Lamber's CPA Review; **Michael D. Doyle**, Beta Beta, Junior Men's Surfing Championship Circuit; **David R. D**
Beta, 2nd Lieutenant, United States Marine Corps; **James A. Elias**, Upsilon, Optometry; **Peter J. Enko**, Phi Beta, Field
Ewing, Phi, Law School, University of Michigan; **Stephan Farkouh**, Lambda, Graduate School, Electrical Engineering, Pr
Edward R. Ferguson, Omega, Medical School, Louisiana State University; **Edward Filer**, Phi, Professional Tennis; **And**
Delta, Medical School, University of Oklahoma; **Arthur L. FitzGerald, III**, Beta Beta, National Hockey League Goalie,
Graphics; **Warren R. Forman**, Upsilon, Thin Films Engineer, Texas Instru-
ments; **Christopher A. Foster**, Eta, Financial Planner, Mid-Atlantic Compan-
ies; **David C. Frankel**, Gamma, Law School; **John D. Freedman**, Upsilon,
Options Trader, American Exchange; **Scott J. Freidheim**, Epsilon Omega,
Financial Analyst, John Nuveen; **Daniel Fried**, Omega, Medical School; **Bruce**
C. Galen, Phi, Investment Banker, Buys McGregor; **William M. Gantz**, Omega,
English; **William H. Gemmill, III**, Gamma Tau, Chemical Engineering; **Greg-**
ory C. Giraldo, Lambda, Law School, Harvard University; **Harold J. Gold-**
smith, Nu, Securities; **Drew T. Gordon**, Tau-Phi Beta, Architecture; **James**
A. Graf, Omega, English, Morgan Stanley; **Walter F. Grambow**, Chi, Gradu-
ate School, Animal Science; **Jonathan K. Graves, II**, Kappa, Geology/Marine
Biology; **Barry M. Greenfield**, Epsilon Omega; **Sean Gregg**, Delta, Marketing
Services; **Jeffrey S. Grimm**, Epsilon Iota, Chemistry; **Whitney W. Grimm**,
Epsilon Omega; **Arthur C. Gross**, Tau, Bank Suisse; **Brad Gupta**, Omega,
Finance; **Colin H. Hall**, Zeta, Advertising Consultant, Leo Burnett Agency;
Timothy M. Hall, Beta Beta, Field Engineer, Enterprise Builders; **Benjamin**
J. Handy, Zeta; **John C. Harpole**, Zeta, United States Navy; **Leeland A. Harrs**,
Lambda, Economics; **Kevin M. Heal**, Epsilon Omega; **Matthew H. Higman**,
Kappa, Foreign Service, Department of State; **Edward P. Hogan, Jr.**, Omicron,
Graduate School, Architecture, Syracuse University; **Stuart Horne**, Phi,
Industrial Engineering; **Nicolas J. Howard**, Epsilon Omega, Computer Pro-
grammer/Consultant, Z.S. Associates; **Erik A. N. Huitink**, Zeta Zeta, Mathe-
matics; **Roger A. Hunt**, Omega, Chicago Board of Trade; **Robert J. Jaramillo**,
Eta, Accountant, Amper, Politzner, & Mattia; **James R. Johnson**, Zeta Zeta,
Education; **Jeric J. Johnson**, Phi, Sales, A & W; **Kurt A. Johnson**, Epsilon Phi,
Law School, McGill University; **Mark G. Johnston**, Omicron, Law School,
Michigan First Investors; **Michael P. Mollihan**, Pi, Economics; **Gregory K. Mueller**, Eta, International Relations; **Ran**
College; **David P. Nassar**, Pi, Broadcast Journalism; **Roger W. Nightingale**, Chi Delta, Graduate School, Engineering;
M. Noguiera, Epsilon Omega, Medical School, University of Cincinnati; **Daniel A. Norton**, Gamma, Software Desig
Incorporated; **Carlos A. Pacini**, Theta-Chi, Hotel Administration, Intercontinental Hotels; **Jay J. Park**, Omega, Chemistr
Communications Engineering; **Peter J. Parlow**, Lambda, Psychology; **Donald V. Phillips**, Chi Delta, 2nd Lieutenant,
M. Poli, Chi Delta, Architecture; **Mark P. Pompeo**, Theta, Graduate School, Business; **D. Michael Potkins**, Zeta Zeta
University of Pennsylvania; **S. Devereaux Proctor**, Omicron, Law School, University of Mississippi; **S. Douglas Pugliese**
P. Quinn, Epsilon Omega, Graduate School, Economics/Communication, Northwestern University; **Glenn F. Radermac**
Omega, MIS Consultant, Arthur Anderson Company; **Gregory F. Richo**, Beta Beta, Analyst, Travelers Insurance Comp
Graduate School, Business Administration; **James W. Rupp**, Phi, Retail Consultant, Lord & Taylor; **Nancy B. Saltzma**
Phi, Business School, London; **Charles R. Sander**, Eta, Graduate School, Chemical Engineering, Lehigh University; **G**
Iota, Management Systems; **Anthony Schneider**, Tau, Writer, Short Stories; **R. Frank Schneider**, Epsilon Iota, Manage
Delta, Nuclear Engineer, United States Navy; **Eric H. Semler**, Zeta, Staff Writer, *The (Portland) Oregonian*; **Marc G.**
Epsilon Omega, Insurance; **Eric B. Sloan**, Epsilon Omega, Law School, University of Michigan; **Randall W. Smith**, Ch
Administration, Harvard Business School; **Lawrence S. Spangler**, Chi Delta, Ichthyology; **Anthony V. Stais, II**, Kappa,
Science; **Alexander P. Stephans**, Theta, Reporter, *The Boston Globe*; **Ian K. Storer**, Chi, Electrical Engineer, MIT De
J. Stuart, Chi, Environmental Technology; **Robert W. Sturm**, Phi Beta, Graduate School, Philosophy, Boston Colleg
States Air Force; **Scott L. Taradash**, Epsilon Nu, Telecommunications/Journalism; **Christopher C. Thompson**, Zeta,
Engineering, Rensselaer Polytechnic Institute; **Harold H. Tsai**, Omega, Biochemical Research; **John A. Tucker**, Beta Be
Navin-Shah Investments; **Peter M. Van Genderen**, Zeta, Analyst, Bankers' Trust; **Carl A. Vandermark**, Zeta Zeta, Fore
Gregory L. Wasserman, Upsilon, Finance; **Peter Weinstein**, Omega, Biology; **David J. Weiss**, Epsilon Omega, Medi
Fishmonger, Fulton Fish Market; **Stephen White**, Epsilon Nu, Management, Westin Hotels; **John W. Wing**, Phi, Fi
Student, China; **Thomas F. Wright**, Chi Delta, Medical School, University of Missouri; **Richard B. Yates**, Upsilon, Leg
L. Youmans, Zeta, Analyst, First Boston Corporation; **Bryant S. Zanko**, Beta Beta, Analyst, The Advest Group Inco
English, Northwestern University.

Congratulati

19

*O long may that un
 Still live in t
 And ne'er may we seek
 To escape fro*

in, Upsilon, Project Engineer, General Motors Corporation; **Paul A. Andoni**, Phi, Economics; **Thomas M. Anichini**, Bakirci, Epsilon Nu, Field Director, Psi Upsilon Fraternity; **Milner S. Ball**, Kappa, Art; **David C. Banta**, Beta Beta; cs and Space Administration; **Christopher Beaudoin**, Phi, Marketing Director, Anheuser-Busch Company; **Robert F.** a, Graduate School, Computer Science, Northwestern University; **Ross A. Berner**, Epsilon Omega; **Mark D. Bittner**, ey, Zeta; **Keelin Brennan**, Gamma, Travel Consultant, T. Cook, California; **Charles S. Brochu**, Nu, Finance, IBM of . **Brusman**, Epsilon Omega; **Michael J. Bukowski**, Upsilon, Marketing; **Lawrence S. Burg**, Eta, Mechanical Engineer, arter, Zeta, Journalism; **James O. Carter**, Tau, Journalism; **Steven J. Case**, Zeta Zeta, Geological Engineering; **Alex** Duke University; **Joseph Ciaudelli**, Lambda, Electrical Engineering; **John P. Ciovacco**, Theta, Managerial Economics; Professional Basketball; **William E. Conklin**, Kappa, Chinese Culture; **Victor H. Contero**, Lambda, First Lieutenant, ng; **A. Neil Craik**, Epsilon Phi, Graduate School, Philosophy, McGill University; **Martin D. Criminale**, Theta Theta, d S. Cuff, Theta Theta, Biology; **Stephen D. Culberson**, Phi Beta, Research Aid; **James A. Cunningham**, Omicron, ntative, Schramsberg Wines; **Pacifio M. DeCapua, Jr.**, Beta Beta, Law School, Georgetown University; **E. Benjamin** ; **David W. Dix**, Upsilon, Mechanical Engineering; **Peter A. Donat**, Zeta; **Michael G. Donovan**, Beta Beta, Franchise hi, Law School, Wayne State University; **Kevin J. Dundon**, Phi, Electrical Engineer, Centel; **Brian P. Durkin**, Beta , Psi Upsilon Fraternity; **Doug Ethell**, Zeta Zeta, Graduate School, Genetics, University of British Columbia; **Stephen** University; **John-Paul Favereau**, Tau, Law School; **Patrick Fay**, Epsilon Iota, Graduate School, Mechanical Engineering; iller, Beta Beta, Software Marketing, AndoSoft, Inc.; **Michael T. Finster**, Epsilon Omega; **Barron C. Fishburne**, Chi Maple Leafs; **Thomas J. Foote**, Zeta, United States Ski Team; **Robert J. Fordi, Jr.**, Kappa Phi Provisional, Computer

to the Class

37

*killed by disdain,
s of us all,
fe's journey we tread
rious thrall!*

*Horatio Alger
Alpha 1852*

University of Chicago; **Kevin F. Jungfleisch**, Theta Theta, Economics; **Richard B. Katsoff**, Eta; **Bruce B. Kelson**, Zeta, International Affairs Assistant, Lasertech Inc. of Germany; **Henry H. Kipp**, Chi, Communications; **Michael R. Kroeger**, Theta Theta, Psychology; **Erick W. Kuchar**, Beta Beta, Financial Analyst, Hartford Steam Boiler Inspection and Insurance Company; **Daniel R. Kuperstein**, Pi, Political Science; **Anthony Kuznik**, Omega, Law School, Columbia University; **Patrick E. Lawlor**, Nu, Graduate School, Anthropology, University of Toronto; **Christopher J. Lee**, Upsilon, Economics; **Adam F. Leff**, Tau, Chemical Bank; **Samuel K. Lim**, Omicron, Mechanical Engineering; **David A. Linda**, Epsilon Omega; **Matthew F. Lintner**, Zeta, Law School, Stanford University; **Carson D. Liu**, Omega, Medical School, Northwestern University; **John S. Liu**, Chi Delta, Medical School, Medical College of Virginia; **Michael J. Lormore**, Chi, Graduate School, Animal Science; **John D. Maguire**, Epsilon Nu, United States Marine Corps; **Steven P. Majoros**, Phi, Journalism; **Neal S. Malhotra**, Omega, Entrepreneur; **Taylor M. Mali**, Kappa, Drama; **Bartholomew B. Mallio**, Kappa, Music; **Scott J. Malloy**, Eta, Electrical Engineering; **David W. Markell**, Chi Delta, Molecular Biology; **Carlo J. Marrello**, Nu, Public Relations/Politics; **Christopher J. Martin**, Theta, Investment Banking; **Michael P. McCarthy**, Upsilon, Optical Engineering; **Richard T. McCaulley**, Beta Beta, Project Manager, Fers Incorporated; **William S. McGraw**, Epsilon Omega, Medical School, Ohio State University; **Corey T. McMillan**, Theta Theta, Industrial Engineering; **Francis J. McMullan**, Epsilon Iota, Computer Science; **Joseph L. Micca**, Chi, Medical School, Duke University; **Arthur C. Miller**, Lambda, Civil Engineering; **Duncan R. Miller**, Zeta Zeta, Medical School, University of British Columbia; **R. Alex Miller**, Zeta; **Alec F. Minne**, Omicron, Marketing, Porter Cable; **Donald M. Mishory**, Phi, Sales, Western y, Phi, Financial Management, Boston Been Co.; **David W. Myers**, Zeta, Graduate School, Engineering, Dartmouth iversity; **Wayne E. Niles**, Pi, Marketing; **Michael G. Noel**, Omega, Dental School, Northwestern University; **Joseph** erprises; **Steven E. Oeck**, Theta Theta, Speech Communication; **Anthony Orlando**, Phi, Chemical Engineer, OUP ; **Parker**, Phi, Economics/Computers; **Lawrence D. Parker**, Phi, Computer Engineering; **Stanley N. Parker**, Omicron, es Army; **Charles Pierce, Jr.**, Phi, Securities; **James Pietrowski**, Epsilon Nu; **Annalee Poe**, Kappa, Art; **Christopher** **Jonathan G. Powers, Jr.**, Gamma, Entrepreneur; **Peder E. Prahl**, Tau, Graduate School, Business Administration, aduate School, Spanish, University of Pennsylvania; **Colin P. Purcell**, Chi, Graduate School, Animal Science; **Francis** **Stanley J. M. Ramatowski**, Epsilon Omega, MIS Consultant, Arthur Anderson Company; **Michael J. Reddy**, Epsilon ; **B. Ris**, Epsilon Nu, Medical School; **Timothy B. Rooney**, Zeta, Pilot, United States Navy; **Barry R. Rubio**, Upsilon, Financial Analyst, Shearson Lehman Brothers; **Constantine H. Samios**, Delta, Real Estate; **Harry Samuels**, Epsilon is, Kappa Phi Provisional, Medical School; **John T. Savage**, Zeta, Analyst, Merrill Lynch; **Daniel R. Schloss**, Epsilon ns; **Aditya Schroff**, Omega, A. S. International; **Daniel M. Schutt**, Pi, Television Writing; **Jonathan G. Schwarz**, Chi , Delta, United States Marine Corps; **Clayton B. Shelver**, Theta Theta, Business Administration; **Andrew J. Sklover**, aduate School, Engineering, Princeton University; **Thomas B. Smith**, Epsilon Nu, Finance; **Wendy K. Smith**, Sigma, Banking, Salomon Brothers; **Mark L. Stanavage**, Kappa Phi Provisional, Finance; **Michael C. Stanton**, Pi, Political ncorporated; **Kurt E. Stout**, Beta Beta, Realtor, Long and Foster Realty; **Steven Strongosky**, Epsilon Omega; **Daniel** **Sussman**, Gamma, Law School, University of Michigan; **David G. Sveden, Jr.**, Theta, Electrical Engineer, United Trainee, Brown Brothers, Harriman & Company; **Todd W. Trilling**, Epsilon Iota, Graduate School, Aeronautical . **Tullio**, Epsilon Omega; **Clifton M. Tyler**, Chi Delta, Assistant Manager, Equitable Bank; **Scott Ulmer**, Phi, Banking, n **Viggiano**, Epsilon Nu, Real Estate Development; **Daniel F. Ward**, Beta Beta; **Adam H. Warshofsky**, Delta, Drama; University of Michigan; **Mark J. Wheatley**, Eta, Para-Legal, Wheatley and Wollesen; **Carleton W. Wheeler**, Kappa, tments, Merrill Lynch; **Michael C. Woodhall**, Chi Delta, Biomedical Engineering; **Peter M. Worthing**, Beta Beta, adden, Arps, Meager, & Flom; **Michael J. York**, Epsilon Iota, Mathematics, The Advest Group Incorporated; **Andrew** **eph S. Zaren**, Chi Delta, 2nd Lieutenant, United States Air Force; **Edward S. Zusman**, Epsilon, Graduate School,

EXECUTIVE COUNCIL MEETING



The Executive Council's third meeting of 1986-87 took place on Friday, February 6, 1987 at the Hotel La Citadelle in Montreal, Quebec. Held in conjunction with the East and North Divisional Conference hosted that weekend by the Epsilon Phi Chapter at McGill University, the meeting was followed by dinner with the alumni leaders of the Epsilon Phi and a reception hosted by the undergraduates at the house.

Among the important items discussed at the meeting were the following:

- Report of the approval by The Psi Upsilon Foundation, Inc. of the appointment of the current Executive Vice President of the Fraternity to the position of Executive Director of the Foundation, effective July 1, 1987.
- Appointment of a Search Committee to identify a successor for Henry B. Poor, Gamma '39, as Executive Vice President of the Fraternity, and authorization to the President and Treasurer to act, if necessary, in making changes to the present office facilities.
- Report of recent legislation in the Commonwealth of Pennsylvania to limit directors' liability and recommendation to make Executive Council by-laws change at next meeting in order to implement this.
- Approval of a seven-month financial statement showing income of \$149,490.74 and expenses of \$174,250.03, for a deficit of \$24,759.29, and approval of a seven-month balance sheet showing a net worth of \$60,506.23. Receipt of budgeted income from the Foundation will dramatically increase income figure and reduce deficit.
- Report on 1986-87 Annual Giving results to date, including a prediction that the program would fall approximately \$13,000 short of the goal.
- Report of the purchase of office computer equipment consisting of a PCX 20 mg DOS with 640K RAM and 360K drive, an appropriate monitor, a laser jet printer, and WordPerfect software.
- Resolution to draft a document specifically addressing the minimum insurance coverage which is acceptable for

Chapters to carry and which includes recommended methods for effectively managing risks.

- Decision to postpone further consideration of entering into the Founders Insurance Company and unanimous approval of a resolution of appreciation to James A. Swanke, Jr., Rho '80, Chairman of the Insurance Committee, for the outstanding job he had done in thoroughly investigating the advisability of taking this step.
- Approval of a resolution to declare Delta Kappa Phi Fraternity at Pennsylvania State University in State College as the Kappa Phi Provisional Chapter of Psi Upsilon.
- Concern expressed that the proposed pledge program of the Eta Chapter at Lehigh University did not conform to the standards set forth in the Constitution, and direction to cease the program until such time as a fraternity education program can be written by the Chapter and approved by the Executive Council.
- Report of outstanding chapter assessments totaling \$25,961.

On April 11, 1987 the Executive Council traveled to the Student Union Building of Rensselaer Polytechnic Institute in Troy, New York for its fourth meeting. Following the meeting, Executive Council members were privileged to join with Epsilon Iota undergraduates and alumni in celebrating the Chapter's fifth anniversary with a festive banquet on the R.P.I. campus and a reception back at the house. Members of the Undergraduate Advisory Board also were on hand to begin their weekend of deliberations.

Action was taken on a variety of topics, including the following:

- Report of the pledging of undergraduates and alumni at the Kappa Phi Provisional Chapter at Pennsylvania State University in State College on April 4, 1987.
- Approval of a nine-month financial statement showing receipts of \$217,615.83 and expenses of \$215,157.14, for a surplus of \$2,458.69, and a nine-month balance sheet which reflects a

net worth of \$56,823.45.

- Report of Annual Giving contributions totaling \$118,198, representing 2,071 gifts.
- Report of the Long Range Planning Committee's meeting in Montreal, Quebec concerning the future direction of conventions in regard to format, location, timing, etc.
- Resolution to declare the Rho Chapter at the University of Wisconsin inactive, following notification that the small group of undergraduates in Madison all had gone inactive.
- Conditional approval of the Eta Chapter's revised fraternity education program, with a suggestion to include academic counseling as part of the program.
- Approval of a revised definition of review status (disciplinary action imposed by the Executive Council) to include two levels — one for a specific misdeed and the other for a condition of sufficient severity to threaten a chapter's survival.
- Approval of an Executive Council by-law amendment which incorporates a provision exempting directors from liability in certain circumstances, as provided in recent legislation of the Commonwealth of Pennsylvania.
- Report of formal request by the Lambda Chapter at Columbia University to host the 1992 Convention in commemoration of its 150th anniversary.

Notice is hereby given that recommendations of alumni for election to the Executive Council presently are being accepted by the Nominating Committee. All suggestions must be received in writing by August 15 and should have the prior approval of the proposed alumnus. The Nominating Committee, after careful deliberation, will present its nominations to the delegates at the 144th Convention in August for their consideration. Please forward recommendations to: Nominating Committee, Psi Upsilon Fraternity, Two Station Square, Paoli, Pennsylvania 19301.

ALUMNI NEWS AND NOTES



George Abbott, Upsilon '11, famed producer, writer, and director, celebrated his 100th birthday on June 25. His centenary was observed with a Great Lakes Theater Festival in Philadelphia and a gala benefit for the Actors' Fund at the Palace Theater in New York. His long list of achievements (including 129 productions) was recognized with a special Tony Award on June 7, the sixth such award in his brilliant career! Brother Abbott also has won a Pulitzer Prize (for "Fiorello") and is among those on the elite Kennedy Center honors list. He presently is directing a revival of "Broadway," the raffish speakeasy play that made him famous in the 1920's.

John M. Anderson, Iota '60, spends most of his time counseling municipalities on the issuance of tax free bonds. He chairs the management committee of Peck, Shaffer & Williams, a Cincinnati-

based law firm that is one of the country's oldest and largest firms specializing entirely in the law of public finance.

But, most mornings from 6:30 until 8:30, Brother Anderson becomes a determined novelist. His first novel, recently published by Allen-Bennington, is *KINCADE CHRONICLES*, an adventure story which follows generations of Kincade pirates, preachers, lawyers, landowners, and businessmen from the Colonial Virginia coast of 1614 to contemporary Ohio. He has completed a biography set in the 11th century and is now at work on two novels, one of which is set inside a modern law firm.

A native of Newark, Ohio, Brother Anderson attended Kenyon College and Yale Law School. He was admitted to the bar in Ohio in 1963, in Kentucky in 1985, and to practice before the Supreme Court of the United States in 1971. He now lives in East Walnut Hills (Cincinnati) and at Andana Farms in Owen County,

Kentucky. When not practicing law or writing, he breeds, raises, and sells championship Scotch Highland cattle.

Bert S. Friedman, Phi '85, graduated from Wake Forest University with his MBA in May. He has taken a position in the Procurement and Supply Organization of Ford Motor Company in Dearborn, Michigan.

Jonathan T. Howe, Epsilon Omega '63, recently has become President of the National School Boards Association.



Miles J. Turpin
Epsilon '54

Miles J. Turpin, Epsilon '54, has become Chairman and Chief Executive Officer of Grey Advertising's Western Division in Los Angeles. Brother Turpin joined Grey in 1962, its first year as a full-service agency in California, with the title of Manager of Marketing Services. He is a Phi Beta Kappa graduate of the University of California at Berkeley, the marketing Management Program at Stanford University's Graduate School of Business, and the Managerial Policy Institute at USC's Graduate School of Business.

Brother Turpin is a director of Town Hall of California, a trustee of Claremont McKenna College, and a director of both the Southern California Multiple Sclerosis Society and of Junior Achievement. He also is a member of the Los Angeles Advertising Club; Sales & Marketing Executives; and the American Marketing Association, of which he is a former director.



Palm Desert, California was the setting for the April 24th gathering of a group of Theta Theta alumni. Present were: F. Bruce Benz '45, Thomas B. Gleed '48, Lee C. Hauge '46, William J. Brink '46, and Norman J. Schoonover '46.

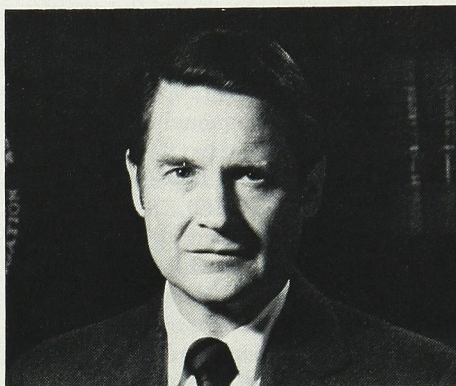
William P. King, Jr., Omicron '73, has become associated with the law firm of Gesas, Pilati and Gesas, Ltd. in Chicago. He formerly served as the law clerk to Charles B. McCormick, United States bankruptcy judge.

George D. La Budde, Rho '29, serves on the Board of Directors of the Milwaukee County Zoo, the Friends of Milwaukee Public Museum, and the Boy Scouts of America-Milwaukee Council. He writes, "Just passed my eightieth birthday . . . still downhill skiing and playing tennis two or three times weekly."

Jeffrey A. Marx, Epsilon Omega '84, winner of a 1986 Pulitzer Prize in investigative reporting for his two-part series on alleged improper payments in the Kentucky basketball program, again has received national attention for his recent *SPORTS ILLUSTRATED* cover story and interview with Gary McLain, prominent member of Villanova University's 1986 NCAA championship basketball team. The article deals with McLain's alleged use of cocaine throughout his basketball

career and specifically during the NCAA championship series. Brother Marx is a reporter for the *LEXINGTON HERALD-LEADER* in Kentucky.

William H. Webster, Gamma '45, has been appointed by President Reagan as the new director of the Central Intelligence Agency. Director of the FBI since 1978, Brother Webster is recognized as a man of unassailable integrity who probably will run the CIA as he did the FBI



William H. Webster
Gamma '45

— by the book and in close consultation with Congress.

A St. Louis lawyer and lifelong Republican who was appointed to the federal bench in Missouri by President Nixon in 1971, "The Judge," as he likes to be called, is expected once again to restore credibility to an ailing agency.

HOW MUCH IS TOO MUCH?

(Continued from page 9)

curricular lives of their students. Many campuses have instituted programs encouraging social responsibility in all of their students, not just Greeks. While these signs are encouraging, we still have a long way to go.

It is time for us to realize that we *are* responsible for the safety and health of our brothers; that our Chapter houses are not "safe houses" from the 21-year-old legal drinking age; that fraternities must return to their role as the leaders on campus; and that our founders established this order, and we pledged our sacred honors, not to serve as bartenders, but as brothers.

RUSH RECOMMENDATION

If you know an entering student or an uncommitted undergraduate who would add to, and benefit from, a Psi Upsilon experience, you will be doing both him and the Fraternity a valuable service in completing and returning this form to Psi Upsilon Fraternity, Two Station Square, Paoli, Pennsylvania 19301, from where it will be forwarded to the appropriate Chapter.

Full name _____

Home address _____

College/University _____ Class _____

Secondary school _____ Year graduated _____

Psi Upsilon connections _____

Recommended by _____

Address _____

Date _____ Chapter _____ Class _____

Any further information, such as academic record, extracurricular activities, interests, accomplishments, etc., would be most helpful, if known.

36 SCHOLARSHIPS AWARDED FOR 1987-88

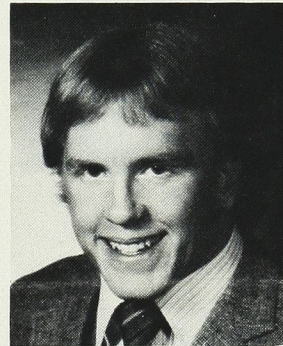
The Psi Upsilon Foundation, Inc. is proud to present the 1987-88 scholarship grant recipients. At its April 21, 1987 meeting the Board of Directors of the Foundation unanimously voted to award scholarship grants totaling \$32,034 to thirty-six deserving recipients representing twenty Chapters. Congratulations to the worthy recipients, all of whom personify the qualities which are sought in applicants — strength of character, integrity, leadership ability, and participation in Chapter affairs.

The Foundation is very proud of the fact that the largest percentage of its earned income is granted to deserving undergraduates for the purpose of assisting them in pursuing their college educations. The scholarship program is only one of many worthwhile projects which the Foundation has undertaken in recent years — one from which enormous satisfaction is derived.

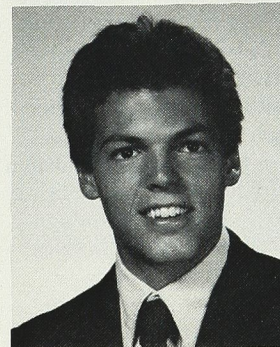
A comprehensive application and review procedure is followed each year to identify the most qualified undergraduates to receive the awards. A scholarship committee composed of Henry B. Poor, Gamma '39, Chairman; Travis B. Jacobs, Lambda '62; R. Timothy Leedy, Phi '57; and George T. Sewall, Kappa '32, works diligently each year to determine the best candidates from the many qualified applicants who apply. Their work has been a major factor in the great success of the scholarship program.

The Psi Upsilon Foundation, Inc. Scholarship Program

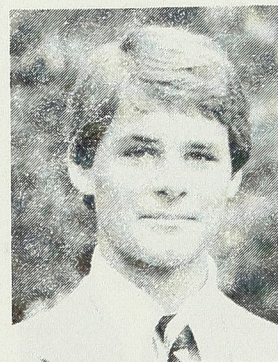
Year	Number of Recipients	Chapter Representation	Total Amount of Awards
1959-60	1	1	\$ 30
1960-61	2	2	200
1961-62	4	4	400
1962-63	6	6	650
1963-64	9	9	1,700
1964-65	13	9	1,950
1965-66	13	9	3,150
1966-67	8	6	2,000
1967-68	13	13	2,475
1968-69	10	8	2,900
1969-70	11	10	2,850
1970-71	13	7	3,450
1971-72	14	9	5,000
1972-73	16	11	8,200
1973-74	20	15	8,000
1974-75	18	13	5,050
1975-76	15	11	5,100
1976-77	11	9	5,100
1977-78	16	10	6,600
1978-79	17	12	6,200
1979-80	23	17	8,600
1980-81	23	14	11,150
1981-82	25	15	11,500
1982-83	27	17	15,100
1983-84	30	18	16,500
1984-85	26	16	18,000
1985-86	22	13	20,500
1986-87	30	19	22,700
1987-88	36	20	32,034



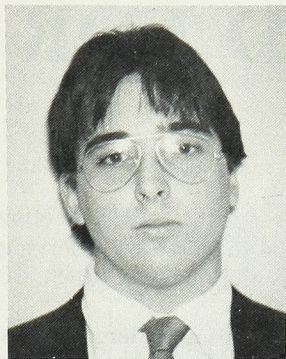
Michael W. Boettcher,
Omega '89
University of Chicago
Home: Conrad, Montana
Major: Biology
Campus: Dean's List, Football,
Intramural Basketball
Chapter: Rush Chairman
Career: Sports Medicine



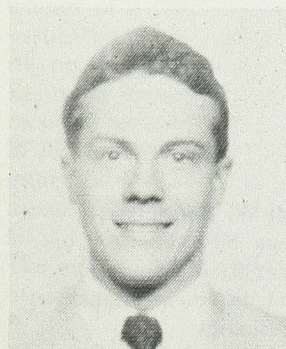
Ross M. Burdick, Beta Beta '88
Trinity College
Home: Williamstown,
Massachusetts
Major: Latin American Studies
Campus: Resident Assistant,
Program Assistant, Varsity
Cross Country, Indoor Track,
Track, Junior Varsity
Basketball, Soccer
Chapter: Fundraising
Committee (Co-Chairman)
Career: Education



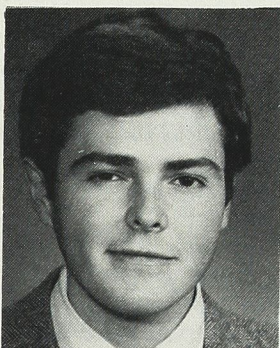
John W. Carpenter, Sigma '89
Brown University
Home: St. Louis, Missouri
Major: History and Political
Science
Campus: Baseball
Chapter: Vice President
Career: Undecided



Frederic A. Corsiglia,
Gamma Tau '90
Georgia Institute of
Technology
Home: Medfield, Massachusetts
Major: Ceramic Engineering
Campus: American Ceramic
Society, National Institute of
Ceramic Engineers, Rugby
Football Club
Chapter: President, Secretary,
Corresponding Secretary,
House Manager, IFC
Representative, Rush
Chairman, Fundraising
Chairman
Career: Ceramic Engineering



Richard A. Davis, III,
Omega '88
University of Chicago
Home: Indianapolis, Indiana
Major: Economics
Campus: Varsity Track, Cross
Country, Pierce Tower
Dormitory Representative
and Social Chairman, Math
Tutor for local High School
Students, Student Schools
Committee Representative
Chapter: Intramural Sports
Representative
Career: Law



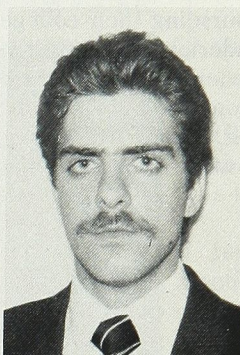
Scott M. Hall, Eta '88
Lehigh University
Home: St. Thomas, Virgin
Islands
Major: Electrical Engineering
Campus: Tau Beta Pi,
International Club
(President), Sailing Team,
Squash Club, Dean's List
Chapter: Scholarship Chairman
Career: Electrical Engineering



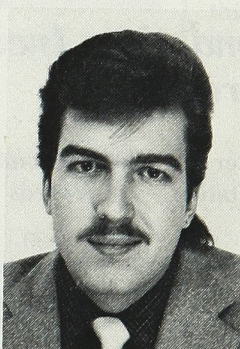
Keith E. Howie, Chi '88
Cornell University
Home: Shawville, Quebec,
Canada
Major: Architecture
Campus: Varsity Hockey
Chapter: Athletic Chairman,
Alumni Relations, Secretary,
Owl Club Founding Member
Career: Architecture

FRANCIS C. HARDIE Omicron-Zeta '18 Awards

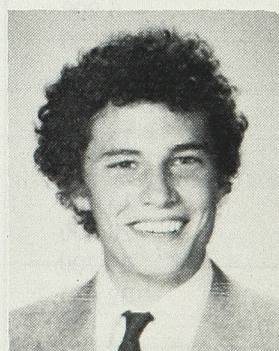
A generous benefactor of Dartmouth College, the Zeta Chapter, and The Psi Upsilon Foundation, Inc., Brother Hardie was the Executive Vice President of the United States Steel Corporation.



Joseph S. Barbera, Delta '88
New York University
Home: New York City
Major: Finance
Campus: IFC President, Editor
NYU Greek Handbook,
Organizer NYU's first dry
rush
Chapter: President, Rush
Chairman, IFC
Representative, Social
Chairman
Career: Trading



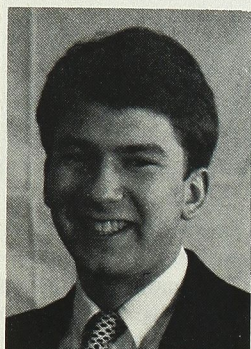
Edmond F. Thompson,
Delta '88
New York University
Home: North Merrick, New
York
Major: Business Management
Campus: Albert J. Theile
Award, University Scholar,
Management Society,
University Orientation
Chapter: President, IFC
Representative, Rush
Chairman
Career: Corporate/Legal
Management



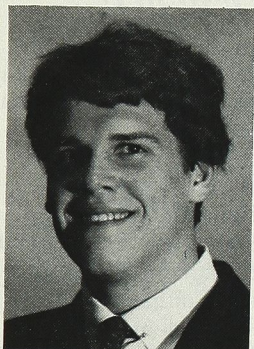
Thomas J. Kammerer,
Epsilon Omega '88
Northwestern University
Home: Lake Forest, Illinois
Major: Economics
Campus: Soccer Team,
Wilmette Park District
Referee, Northwestern
University Special Olympics
Volunteer
Chapter: Secretary, Summer
House Manager, Steward
Career: Business/Finance

BENJAMIN T. BURTON, Chi '21 Awards

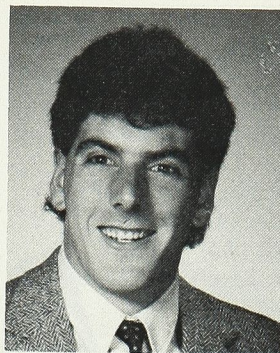
President of the Executive Council of Psi Upsilon from 1955 to 1962, Brother Burton was the founder and senior partner of Burton-Dana and Company.



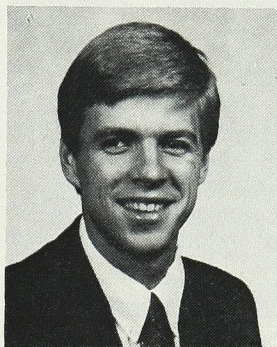
Todd M. Fulshaw, Chi '88
Cornell University
Home: Berlin, Maryland
Major: Architecture
Chapter: President, Social
Chairman, House
Renovations, Owl Club
Founding Member
Career: Architecture



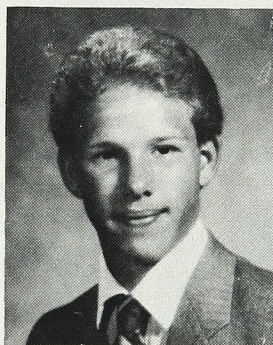
Brett P. Traussi, Chi '88
Cornell University
Home: Fairfield, Connecticut
Major: Hotel Administration
Campus: Dean's List, Ye Hosts
Honorary Society
Chapter: President, Fraternity
Education Chairman,
Homecoming Chairman
Career: Restaurant
Management



Andrew D. Lacey, Xi '89
Wesleyan University
Home: Swarthmore,
Pennsylvania
Major: Government, History,
Economics
Campus: Varsity Soccer,
Baseball
Chapter: Assistant Steward,
Librarian
Career: Government/Law

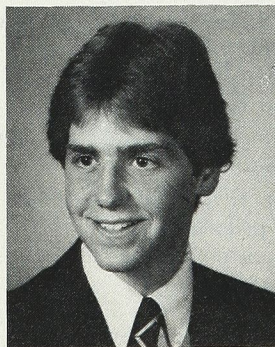
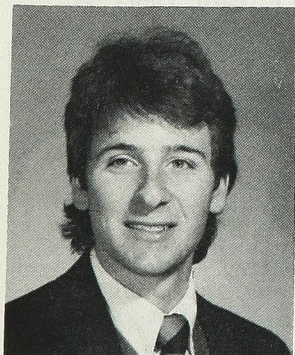


Brent A. Langman,
Omicron '88
University of Illinois
Home: St. Anne, Illinois
Major: Animal Science
Campus: Hoof and Horn Club,
University of Illinois Judging
Team, Greeks for Greeks
Committee
Chapter: Treasurer, Fraternity
Education Chairman,
Steward, ARROW Editor
Career: Agriculture Publishing

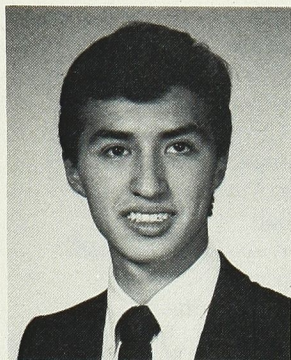


Michael S. Liebman, Eta '88
Lehigh University
Home: Huntingdon Valley,
Pennsylvania
Major: Computer Science,
Psychology, English
Campus: Dean's List,
Intramural Sports
Chapter: Parliamentarian,
Secretary
Career: Computer
Programming

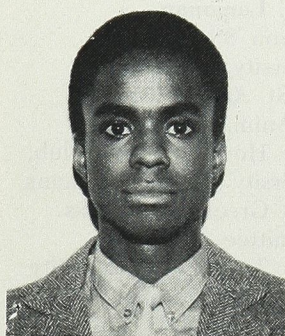
Michael C. Kaplan, Chi Delta
'88
Duke University
Home: Morristown, New Jersey
Major: Zoology
Campus: Dean's List,
Advisory Counselor, Tennis
Club, Karate Club
Chapter: Rush Chairman,
Service Project Coordinator,
Delegate to 143rd Psi
Upsilon Convention,
Undergraduate Advisory
Board
Career: Zoology



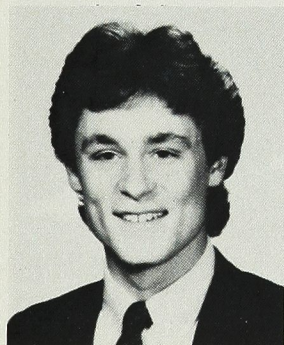
James A. Mazzarella, II,
Epsilon Nu '88
Michigan State University
Home: Bloomfield, Michigan
Major: International Relations
Campus: International Relations
Organization, AIESEC
Chapter: Rush Chairman
Career: Business



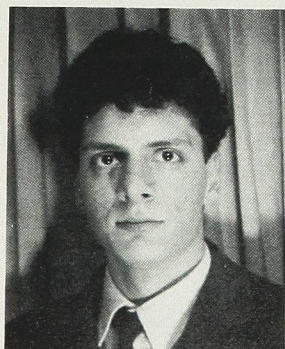
Michael T. Mihalik,
Theta Theta '88
University of Washington
Home: Seattle, Washington
Major: Electrical Engineering
Campus: Dean's List
Chapter: Secretary, Chapter
Services Committee
(Chairman)
Career: Electrical Engineering



Richard E. Mitchell, Chi '89
Cornell University
Home: Ithaca, New York
Major: Architecture
Campus: Minority Association
of Architects, Cycle Team
Chapter: Secretary, IFC
Representative
Career: Architecture



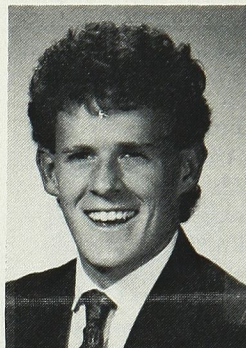
Edward G. Mitzen, Pi '89
Syracuse University
Home: Voorheesville, New
York
Major: Biology
Campus: Dormitory Floor
Representative, Biology Club
Member
Chapter: Undergraduate Trust
Representative, Initiation
Banquet Committee
Career: Medicine



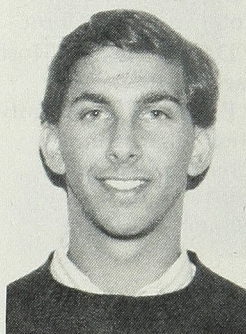
Peter G. Paone, Delta '88
New York University
Home: Staten Island, New York
Major: International Business/
Finance
Campus: Orientation Leader,
Finance Society, International
Business Club
Chapter: IFC Delegate, 144th
Psi Upsilon Convention
Committee (Chairman),
Delegate to 143rd
Convention
Career: Business Law

EARL D. BABST, Iota-Phi '93 Awards

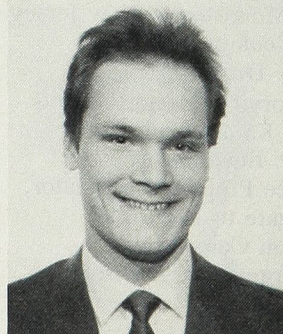
Brother Babst was the President of the Executive Council of Psi Upsilon from 1925 to 1929 and Chairman of the American Sugar Refining Council.



Wayne S. Hill,
Epsilon Omega '88
Northwestern University
Home: Denver, Colorado
Major: Political Science
Campus: Varsity Soccer (Co-
Captain), NCAA Volunteers
for Youth, Student Director/
Northwestern Athletic
Department, Sports Reporter
DAILY NORTHWESTERN
Chapter: President, Treasurer,
Summer House Manager,
Social Chairman, Delegate to
142nd and 143rd Psi Upsilon
Conventions, Committee
Chairman 143rd Convention
Career: Politics



Michael J. Horowitz,
Chi Delta '88
Duke University
Home: Hazlet, New Jersey
Major: Biology
Campus: Varsity Fencing Team
(Squad Captain), Freshman
Advisory Counselor
Chapter: President, Forum
Coordinator, Vice President
Career: Investment Banking



Joseph F. Patti, Delta '88
New York University
Home: Ozone Park, New York
Major: Finance/Accounting
Campus: Orientation Leader,
Finance Society
Chapter: Treasurer, IFC
Representative, Athletic
Chairman, Scholarship
Chairman, 144th Psi Upsilon
Convention Committee (Vice
Chairman)
Career: Accounting

R. DeWITT WALLACE, Epsilon '14 Award

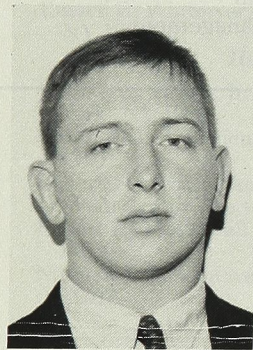
Co-founder of READER'S DIGEST magazine with his wife Lila, Brother Wallace was a supporter of the Epsilon Chapter and The Psi Upsilon Foundation, Inc.



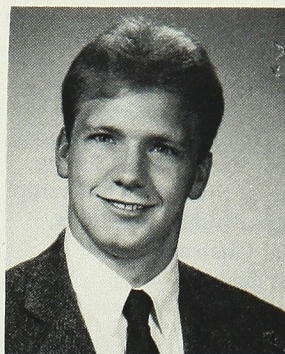
Amy Aldous, Gamma '88
Amherst College
Home: Salt Lake City, Utah
Major: Sociology
Campus: Freshman Dormitory
Residence Counselor
Chapter: Rush Chairperson,
Homecoming Committee,
Vice President
Career: Social Work

MICHAEL D. OBERG, Theta Theta '88 Award

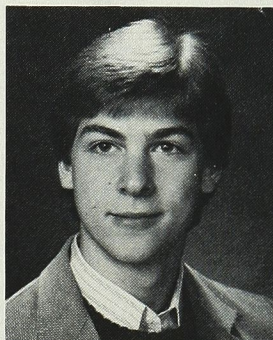
Brother Oberg met an untimely death while performing his duties as Rush Chairman of the Theta Theta Chapter in August, 1985.



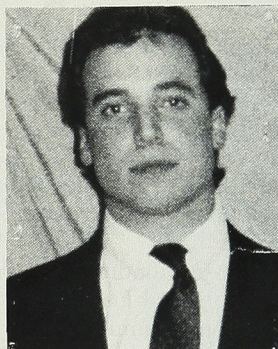
William J. Borkowski,
Theta Theta '87
University of Washington
Home: Seattle, Washington
Major: Economics and
Geography
Campus: Economics Honors
Chapter: President, 143rd
Convention Committee
(Chairman), Vice President
Career: International Trade



Bart P. Reier,
Epsilon Omega '88
Northwestern University
Home: Aurora, Illinois
Major: Mechanical Engineering
Campus: Dean's List,
Cooperative Engineering
Program, Intramural Sports
Career: Mechanical
Engineering



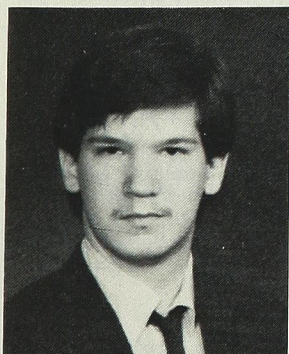
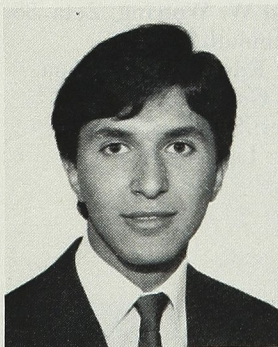
John J. Rivard, Theta Theta '88
University of Washington
Home: Seattle, Washington
Major: Electrical Engineering
Campus: University Chorale,
Arts and Sciences Honors
Program
Chapter: Public Relations
Chairman, Songfest Co-
Leader/Accompanist,
Scholarship Chairman,
Secretary
Career: Engineering

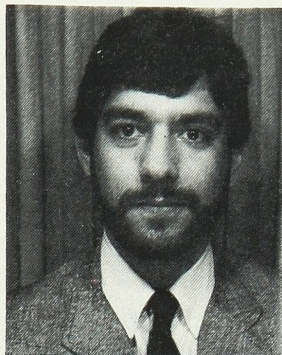


Steven M. Romaniello,
Zeta Tau '88
Tufts University
Home: Stamford, Connecticut
Major: English
Campus: Dean's List, Baseball
Chapter: Vice President,
Fraternity Education
Chairman, House Manager
Career: Undecided

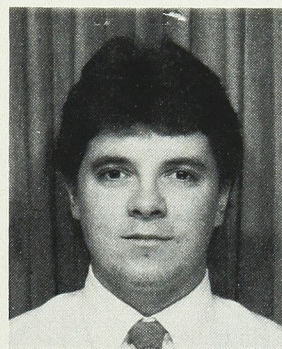
Brian O. Primeau,
Epsilon Iota '89
Rensselaer Polytechnic
Institute
Home: Fitchburg,
Massachusetts
Major: Physics
Campus: Dean's List,
Volunteer Ambulance Squad
Chapter: Scholarship Chairman,
Bylaws Committee
(Chairman), Delegate to 143rd
Psi Upsilon Convention
Career: Astronomy

Faraz Shooshani, Epsilon '88
University of California at
Berkeley
Home: Chicago, Illinois
Major: Economics
Campus: SCOPE Internship
Program, Student to Student
Peer Counseling,
Media Outreach Supervisor,
Drama, Crew
Chapter: Rush Chairman,
Fraternity Events
Coordinator
Career: Business

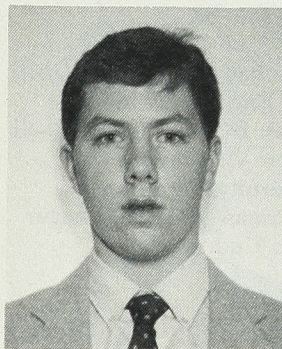




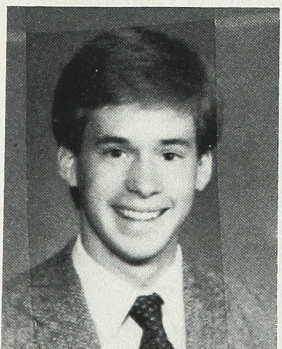
Floyd E. Vasquez, Lambda '89
Columbia University
Home: Albuquerque, New Mexico
Major: History
Campus: Radio Broadcasting, General Studies Scholarship
Chapter: Alumni Relations, Social Chairman
Career: Law



Daniel G. Walsh, Lambda '88
Columbia University
Home: Bayside, New York
Major: Psychology
Campus: Dean's List, Baseball, Kung Fu Club
Chapter: Treasurer, Secretary, Social Chairman
Career: Law



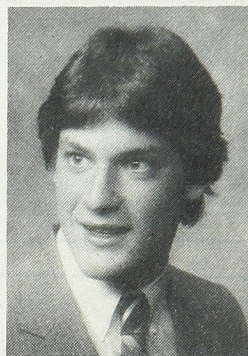
Christopher J. Walz, Theta Theta '88
University of Washington
Home: Seattle, Washington
Major: Political Science
Campus: Intramural Volleyball, Intramural Soccer, Cycling, Weight Lifting
Chapter: Corresponding Secretary, 143rd Psi Upsilon Convention Committee, Public Affairs and Chapter Services Committee
Career: Foreign Service



Earnest W. Wotring, Zeta '88
Dartmouth College
Home: Edmond, Oklahoma
Major: Government
Chapter: Secretary
Career: Law

ROBERT W. MOREY, Pi '20 Award

President of the Executive Council of Psi Upsilon from 1973 to 1979 and a director of The Psi Upsilon Foundation, Inc. from 1974 until his death in 1985, Brother Morey was a Vice President of the Morgan Guaranty Trust Company of New York.



Brian E. Setzer, Pi '88
Syracuse University
Home: Ellington, Connecticut
Major: Operations Management
Campus: Dean's List, Dean's recognition for initiative in management activities, Beta Psi Epsilon, Investment Club, Marketing Association (Chairman), Investment Club Seminar, Outing Club, Supervisor for Syracuse University Catering Service, "A Touch of Class" (President)
Chapter: Homecoming Chairman, Scholarship Chairman, Assistant Rush Chairman
Career: Management



"Excuse me, but was that 'to wit' or 'to woo'?"

The Psi Upsilon Foundation, Inc.

Officers

President — Robert L. Kaiser, Zeta '39, 315 Blunt Alumni Center, Dartmouth College, Hanover, NH 03755

Vice President — R. Timothy Leedy, Phi '57, 18 Carriage Lane, New Canaan, CT 06840

Secretary — David A. B. Brown, Epsilon Phi '66, 31 Everett Ave., Winchester, MA 01890

Treasurer — Andrew M. Kerstein, Delta '76, 163 Grant Ave., New Providence, NJ 07974

Executive Director

Henry B. Poor, Gamma '39, 614 Andover Rd., Newtown Square, PA 19073

Directors

Neal A. Brown, Psi '58, Greenfield Eisenberg Stein & Senior, 99 Park Ave., New York, NY 10016

A. Durston Dodge, Theta '44, 486 High St., Victor, NY 14564

Robert B. Evans, Phi '30, 200 Renaissance Center, Suite 3048, Detroit, MI 48243

Edward S. Fries, Eta '45, 74 Trinity Pl., New York, NY 10006

James E. Heerin, Jr., Tau '58, 3011 Sycamore Rd., Huntingdon Valley, PA 19006

Jonathan T. Howe, Epsilon Omega '63, 20 N. Wacker Dr., Chicago, IL 60606

Travis B. Jacobs, Lambda '62, History Department, Middlebury College, Middlebury, VT 05753

H. John Lageschulte, Epsilon Omega '59, 49 Dundee Lane, Lake Barrington, IL 60010

William R. Robie, Epsilon Omega '66, 5201 Leesburg Pike, Suite 1501, Falls Church, VA 22041

George T. Sewall, Kappa '32, 1212 Fifth Ave., New York, NY 10029

Donald S. Smith, Jr., Xi '39, 8 LeMay St., West Hartford, CT 06107

Stanton F. Weissenborn, Chi '49, 21 Holton Lane, Essex Fells, NJ 07021

Russell E. Whitmyer, Gamma '36, 150 East 77th St., New York, NY 10021

Honorary Life Members

Jerome W. Brush, Jr., Delta Delta '39, 200 East 66th St., New York, NY 10021

Gardner A. Callanen, Psi '29, 800 Charlotte St., Utica, NY 13501

Robert H. Craft, Tau '29, New York Bank for Savings, 1230 Avenue of the Americas, New York, NY 10020

Robert A. McDowell, Pi '40, 8 Bayside Drive, Plandome, NY 11030

Norman J. Schoonover, Theta Theta '46, Box 7591, Boise, ID 83707

Honorary Directors

C. Everett Bacon, Xi '13

Carlyle F. Barnes, Xi '48

Edward M. Benson, Jr., Epsilon '42

G. Cameron Brown, Omicron '37

John F. Bush, Jr., Upsilon '22

Llewellyn L. Callaway, Jr., Zeta '30

Charles E. Clapp, II, Delta Delta '45

Charles M. Fish, Omicron '28

Joseph B. Hall, Epsilon Omega '52

James R. Kennedy, Rho '35

Jackson F. Moore, Omega '23

John R. Parker, Omicron '28

Walter R. Perschke, Omega '60

Robert W. Purcell, Chi '32

G. Foster Sanford, Jr., Tau '28

George L. Shinn, Gamma '45

Walter W. Vail, Zeta '58

Robert R. Waltz, Theta Theta '35

Charles A. Werner, Omega '55

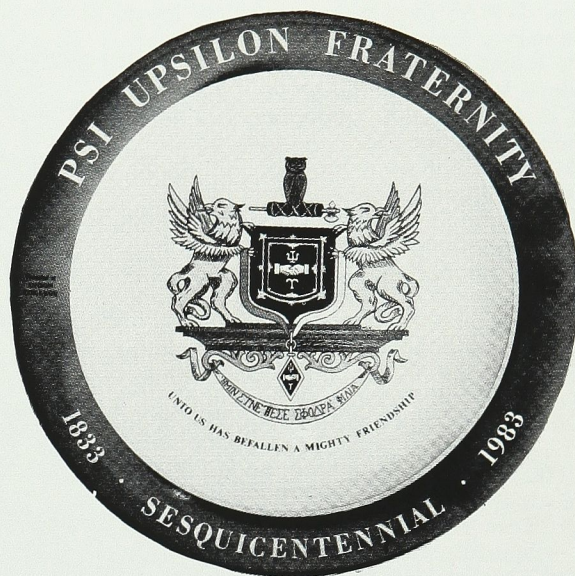
Charles E. Woodman, Epsilon Omega '53

The Psi Upsilon Foundation, Inc. is a public, educational foundation chartered in 1958 in the State of Rhode Island and Providence Plantations. Contributions are fully tax deductible (tax identification number 05-6013135). For more information about gifts and bequests, please contact the Executive Director at:

Two Station Square
Paoli, Pennsylvania 19301
(215) 640-4387

SESQUICENTENNIAL PLATE

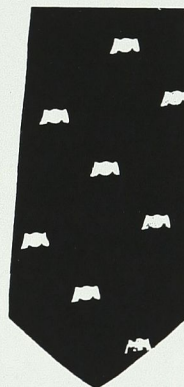
Full-color, bone china



\$17.50

NECKTIES

Silk/polyester blend



Gold clasped hands
on navy blue
background



Gold clasped hands
with gold and navy
blue stripes on garnet
background

\$12.00

Prices include shipping charges. Place order by writing to (please include payment):

Psi Upsilon Fraternity
Two Station Square
Paoli, PA 19301

Active Chapters of Psi Upsilon

Theta — Union College Psi Upsilon House, Union College, Schenectady, NY 12308, (518) 386-4305	1833
Delta — New York University 3-5 Washington Place, New York, NY 10003, (212) 777-6274	1837
Sigma — Brown University Box 1158, Brown University, Providence, RI 02912, (401) 863-5544	1840
Gamma — Amherst College 30 Railroad St., Amherst, MA 01002, (413) 256-0838	1841
Zeta — Dartmouth College 7 W. Wheelock St., Hanover, NH 03755, (603) 643-9824	1842
Lambda — Columbia University 542 W. 114th St., New York, NY 10025, (212) 280-5339	1842
Kappa — Bowdoin College 250 Maine St., Brunswick, ME 04011, (207) 725-3938	1843
Psi — Hamilton College 96 College Hill Road, Clinton, NY 13323, (315) 853-8025	1843
Xi — Wesleyan University 242 High St., Middletown, CT 06457, (203) 346-9749	1843
Upsilon — University of Rochester P.O. Box 29057, River Campus Station, Rochester, NY 14627, (716) 275-6448	1858
Iota — Kenyon College North Leonard Hall, Gambier, OH 43022, (614) 427-2244, Ext. 2250	1860
Phi — University of Michigan 1000 Hill St., Ann Arbor, MI 48104, (313) 761-1055	1865
Omega — University of Chicago 5639 South University Avenue, Chicago, IL 60637, (312) 288-9870	1869
Pi — Syracuse University 101 College Place, Syracuse, NY 13210, (315) 424-9575	1875
Chi — Cornell University Two Forest Park Lane, Ithaca, NY 14853, (607) 272-9772	1876
Beta Beta — Trinity College 81 Vernon Street, Hartford, CT 06106, (203) 728-9893	1880
Eta — Lehigh University 920 Brodhead Avenue, Bethlehem, PA 18015, (215) 691-9702	1884
Tau — University of Pennsylvania 300 South 36th Street, Philadelphia, PA 19104, (215) 222-9338	1891
Mu — University of Minnesota 1617 University Avenue, S.E., Minneapolis, MN 55414, (612) 378-1022	1891
Epsilon — University of California at Berkeley 6426 Telegraph Avenue, Oakland, CA 94609	1902
Omicron — University of Illinois 313 East Armory Avenue, Champaign, IL 61820, (217) 384-9766	1910
Theta Theta — University of Washington 1818 N.E. 47th Street, Seattle, WA 98105, (206) 526-7227	1916
Nu — University of Toronto 157 Spadina Road, Toronto, ON, Canada M5R 2T9, (416) 963-9398	1920
Epsilon Phi — McGill University 510 Pine Avenue, West, Montreal, PQ, Canada H2W 1S6, (514) 289-1707	1928
Zeta Zeta — University of British Columbia 2260 Wesbrook Mall, Vancouver, BC, Canada V6T 1W6, (604) 224-9431	1935
Epsilon Nu — Michigan State University 810 West Grand River Avenue, East Lansing, MI 48823, (517) 351-4687	1943
Epsilon Omega — Northwestern University 620 Lincoln Street, Evanston, IL 60201, (312) 491-3158	1949
Gamma Tau — Georgia Institute of Technology 334 Tenth Street, N.W., Atlanta, GA 30318, (404) 892-6398	1970
Chi Delta — Duke University P.O. Box 4727, Duke Station, Durham, NC 27706, (919) 684-4273	1973
Zeta Tau — Tufts University 165 College Avenue, Somerville, MA 02144, Tel. (617) 623-5461	1981
Epsilon Iota — Rensselaer Polytechnic Institute 2140 Burdett Avenue, Troy, NY 12180, (518) 274-8408	1982
Phi Beta — College of William and Mary CS Box 1803, Williamsburg, VA 23186, (804) 253-4148	1984
Kappa Phi Provisional — Pennsylvania State University 240 East Prospect Avenue, State College, PA 16801, (814) 234-4595	