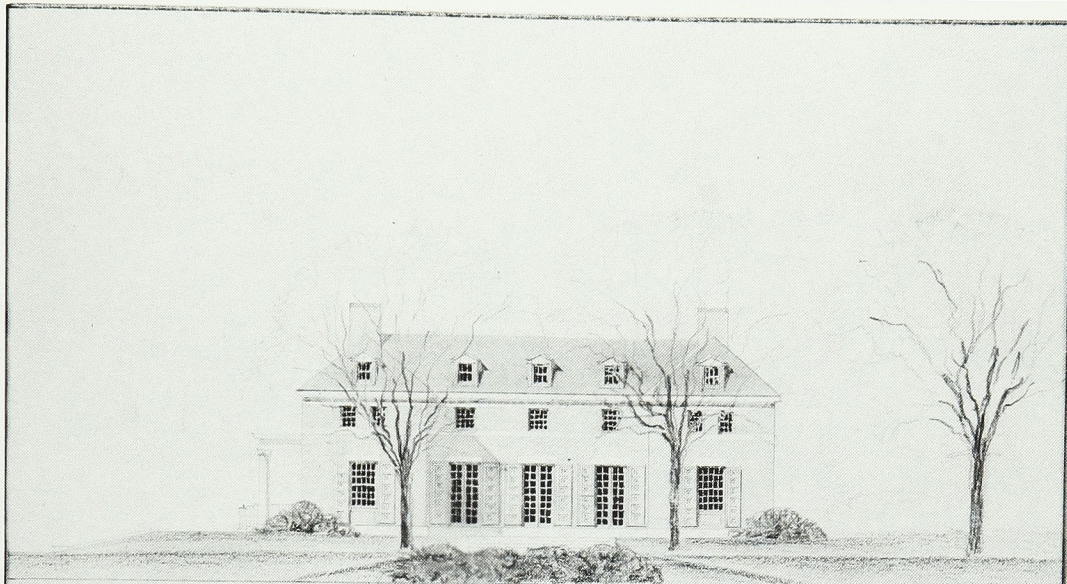


THE

# DIAMOND

Inside: News from  
the Chapters

OF PSI UPSILON



*West Elevation*



*North Elevation*

*Psi Upsilon Fraternity.  
 Union College.  
 Schenectady, N. Y.  
 scale one inch equals sixteen feet.*

ARCHITECT: J. B. ARCHITECTS, 101 PARK AVENUE, NEW YORK, N. Y. 10022

WINTER 1988



# 145th PSI UPSILON CONVENTION

August 25-28, 1988

HYATT  ARLINGTON

## AT WASHINGTON'S KEY BRIDGE

Dear Psi Upsilon Brothers:

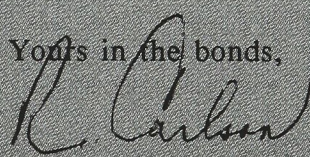
The Hyatt Arlington Hotel has the honor of being the host hotel for the 1988 Convention of the Psi Upsilon Fraternity. As both General Manager of the Hyatt Arlington and an alumnus of the Epsilon Nu Chapter at Michigan State University, I am certainly looking forward to this year's convention.

It will be our pleasure to welcome you to the hotel and to the Washington, D.C. area. The sights and excitement of the Capital area are just minutes away from the hotel. The Iwo Jima Memorial is within walking distance and offers a panoramic view of the famous Washington monuments across the Potomac River. Just across the Key Bridge, historic Georgetown offers a variety of fine dining and entertainment.

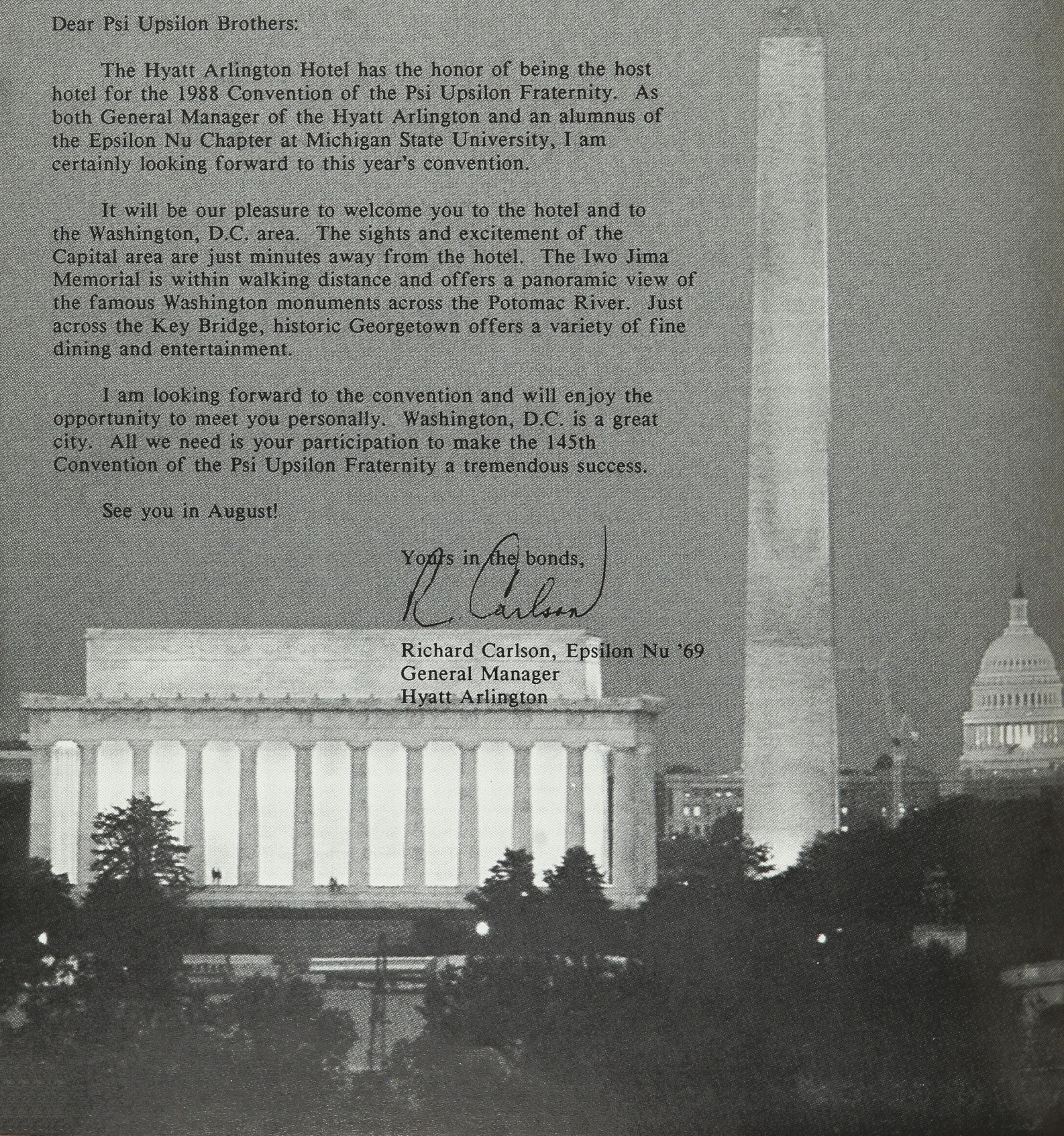
I am looking forward to the convention and will enjoy the opportunity to meet you personally. Washington, D.C. is a great city. All we need is your participation to make the 145th Convention of the Psi Upsilon Fraternity a tremendous success.

See you in August!

Yours in the bonds,



Richard Carlson, Epsilon Nu '69  
General Manager  
Hyatt Arlington







**Psi Upsilon Fraternity**  
 Founded November 24, 1833 at  
 Union College in Schenectady, NY

**The Executive Council  
 of Psi Upsilon**

Note: Years in parentheses indicate expiration of terms.

**Officers**

- President:* William R. Robie, Epsilon Omega '66, (1990) 5201 Leesburg Pike, Ste. 1501, Falls Church, VA 22041  
*Vice President:* David A. B. Brown, Epsilon Phi '66, (1990) 31 Everett Ave., Winchester, MA 01890  
*Secretary:* John K. Menzies, Pi '41, (1991) 1211 Cumberland Ave., Syracuse, NY 13210  
*Treasurer:* Charles M. Hall, Nu Alpha '71, (1991) 900 Pharr Center, 550 Pharr Road., N.E., Atlanta GA 30305

**Executive Director**

Kathleen M. McGlone, Lambda '82H, 1200 Estate Dr., West Chester, PA 19380

**Alumni Term Members**

- Richard D. Dadey, Jr., Pi '80, (1992) 111 Roberts Court, Alexandria, VA 22314  
 Charles S. P. Hodge, Gamma '68, (1988) 1131 S. Forest Dr., Arlington, VA 22204  
 Michael L. Huffman, Zeta '77, (1989) 840 W. Hutchinson St., Chicago, IL 60613  
 Robert L. Kaiser, Zeta '39, (1989) Blunt Alumni Center, Dartmouth College, Hanover, NH 03755  
 Andrew M. Kerstein, Delta '76, (1988) 163 Grant Ave., New Providence, NJ 07974  
 Norman J. Schoonover, Theta Theta '46, (1988) Box 7591, Boise, ID 83707  
 James A. Swanke, Jr., Rho '80, (1988) 2900 S. Abingdon St., Arlington, VA 22206

**Life Member**

Jerome W. Brush, Jr., Delta Delta '39, 200 E. 66th St., New York, NY 10021

**Honorary Life Members**

- Harrison P. Bridge, Beta Beta '61, 40 Yarmouth Rd., Chestnut Hill, MA 02167  
 Gardner A. Callanen, Psi '29, 800 Charlotte St., Utica, NY 13501  
 A. Durston Dodge, Theta '44, 486 High St., Victor, NY 14564  
 Edward S. Fries, Eta '45, 74 Trinity Pl., New York, NY 10006  
 John R. Parker, Omicron '28, 307 Woodlawn Rd., Lincoln, IL 62656  
 Henry B. Poor, Gamma '39, 614 Andover Rd., Newtown Square, PA 19073  
 Roland B. Winsor, Epsilon Phi '27, #1207-415 Greenview Ave., Ottawa, ON K2B 8G5, Canada

**Alumni Advisory Board**

Richard A. Horstmann, Pi '57, (1988) 184 Jasper St., Syracuse, NY 13203

**Undergraduate Advisory Board**

- Russell J. Maxwell, Pi '88, (1988) 416 Kimber Rd., Syracuse, NY 13224  
 Michael R. Loew, Chi '88, (1988) R.R. 2, Windy Fields, New Market, ON L3Y 4V9 Canada

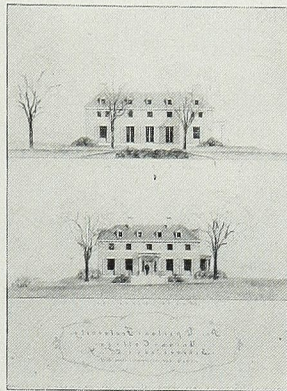
**International Headquarters**

Two Station Square, Paoli, PA 19301  
 (215) 647-4830

- Executive Director:* Kathleen M. McGlone, Lambda '82H  
*Director of Chapter Services:* Thomas L. Phillips, Omicron '85  
*Field Directors:* Kenan Z. Bakirci, Epsilon Nu '87  
 Peter J. Enko, Phi Beta '87  
*Administrative Assistant:* Anne Louise Rice  
*Financial Manager:* Marianne M. Fitzpatrick

THE **DIAMOND**  
 OF PSI UPSILON

In This Issue \_\_\_\_\_ Winter 1988



**Cover**

Featured on the cover of this issue are the original architectural drawings of the Theta Chapter house on the campus of Union College in Schenectady, New York, rendered by the renowned firm of McKim, Mead, and White in 1937. For more information on this magnificent structure, please see article which begins on page 4.

**Features**

“Who trod these halls” ..... 4  
*The Diamond Goes to War* ..... 6

**Departments**

Psi U Hoots ..... 2  
 Executive Council Meetings ..... 8  
 The Chapters Report ..... 9  
 Necrology ..... 20

**The DIAMOND of Psi Upsilon**

An Educational Journal  
 First Published in 1878

VOLUME LXXIV NUMBER 2

*Editor* ..... KATHLEEN M. MCGLONE, Lambda '82H  
*Associate Editor* ..... THOMAS L. PHILLIPS, Omicron '85

*Executive, Publication and Editorial Offices:* Two Station Square, Paoli, Pennsylvania 19301. Telephone 215-647-4830. Life subscription, \$20 (included in membership fee); by subscription \$1.00 per year; single copies 50 cents.

THE DIAMOND (USPS 156-460) is published quarterly (Autumn, Winter, Spring and Summer) by the Psi Upsilon Fraternity. Second-class postage paid at Paoli, Pennsylvania and additional mailing offices. Printed by The Ovid Bell Press, Inc., Fulton, Missouri. POSTMASTER: Send address changes to Psi Upsilon Fraternity, Two Station Square, Paoli, PA 19301.

The Official Publication of Psi Upsilon Fraternity



National Interfraternity Conference



# PSI U HOOTS

## *Fraternity News From Across the Continent*



### LEADING THE WAY — PART I

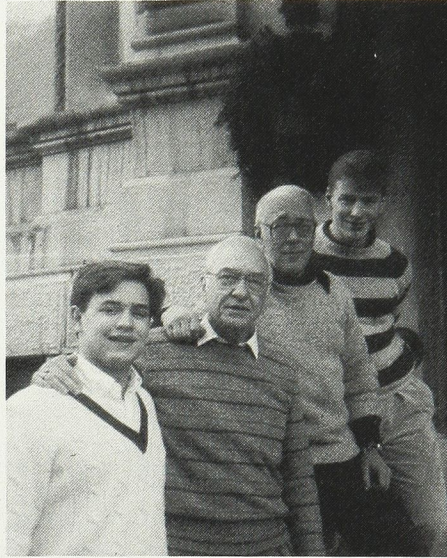
(Paoli, PA) Fraternities develop leaders. It's a claim fraternities have been making for many years, but is it substantiated? Are we helping to mold tomorrow's leaders? The following statistics, which recently were published by the Center for the Study of the College Fraternity, certainly support that theory:

- All but two United States presidents since 1825 have been fraternity members.
- Sixty-three per cent of United States cabinet members since 1900 have been fraternity members.
- Seventy-one per cent of men listed in *Who's Who in America* are fraternity men.
- Eighty-five per cent (40 of 47) of the United States Supreme Court justices since 1910 have been fraternity men.
- Eighty-five per cent of Fortune 500 executives are fraternity members.
- Of the nation's 50 largest corporations, 43 are headed by fraternity members.

One might speculate whether the undergraduates who join fraternities already possess the personal qualities necessary to achieve success, or whether the fraternity experience develops those characteristics which enable them to rise to the top?

### LEADING THE WAY — PART II

(Paoli, PA) The leadership capabilities of many Psi U members are recognized long before they launch their careers. Undergraduates on campuses throughout North America are earning recognition for their contributions to their institutions and communities. One such undergraduate is Russell J. Maxwell, Pi '88, who recently was chosen as one of two senior class marshals for Syracuse University's commencement exercises. Selection was based on leadership ability, academic honors, and service to and involvement in student organizations and the community. Russ Maxwell, a public affairs and economics major, served as the president of the Pi Chapter this year and as chairman of the Undergraduate Advisory



**Kenan Bakirci, Epsilon Nu '87; John Menzies, Pi '41; Dick Horstmann, Pi '57; and Jon Piper, Pi '87, outside the "Landmark" in Syracuse, Saturday meeting place for Pi brothers for the last fifteen years.**

Board. He was one of fifty students chosen nationally last summer to participate in the Leadership America program and was a recipient of the Harry S. Truman Scholarship, a national award that recognizes excellence and commitment to government service.

Another area of which Psi Upsilon can be exceptionally proud is the leadership that our undergraduates are taking in the interfraternity world. The Interfraternity Council (or whatever name it goes by) on at least four campuses that we know of has a Psi U at the helm. Brown University has Michelle E. Dandridge, Sigma '88; New York University, Joseph S. Barbera, Delta '88; Bowdoin College, Jennifer Goldsmith, Kappa '89; and Trinity College, Terrence J. Turner, Beta Beta '88.

### A WEEKEND TRADITION IN SYRACUSE

(Syracuse, NY) There are few Saturdays in the last fifteen years when you could not have found John K. Menzies, Pi '41, and Richard A. Horstmann, Pi '57, en-

joying their weekly ritual at Sterio's Landmark Restaurant. The Landmark is just what the name implies — one of the oldest buildings in historic downtown Syracuse. The restaurant and lounge occupy the lower level of the building that was once, as Brother Horstmann puts it, a "float-up" bank. Back in the days when the current Erie Boulevard was the Erie Canal, boats would actually conduct banking business through windows on the canal side of the historic building.

And what is the ritual, you ask? Every Saturday Brothers Menzies and Horstmann invite at least one undergraduate member of the Pi Chapter to join them for lunch at this local spot. Hardly a member of the chapter in the last fifteen years has not made the Saturday trek downtown to join John and Dick. Often local or visiting alumni will stop by to join the festivities. Members of the Psi U staff look forward to their visits to Syracuse (which they always schedule over a Saturday), and many Executive Council members have had the pleasure of being part of this tradition. It wouldn't be Saturday in Syracuse without lunch at the Landmark.

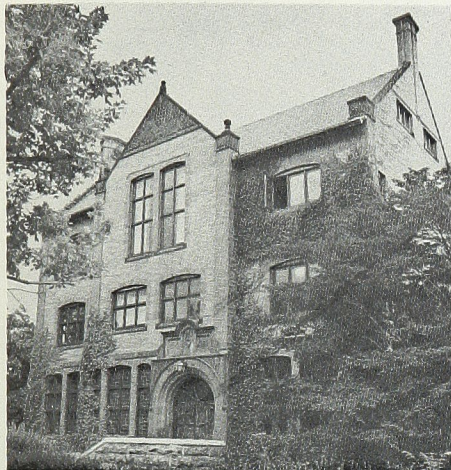
### PROGRESS IN PARTNERSHIP

(Indianapolis, IN) "Fraternity — A Partnership With Higher Education" was the focus of the National Interfraternity Conference (NIC) 1987 annual meeting held December 3-6 in Dallas, Texas. The NIC, an Indianapolis-based federation of 59 international and national college fraternities, meets each year for a legislative session and educational programs for the alumni leaders of its member fraternities. Dr. Ronald W. Roskens, President of the University of Nebraska and featured speaker for the conference, spoke on "The Stuff That Dreams Are Made Of." He outlined four principal dimensions along which the obligations of fraternity might be defined. These included the provision of an environment in which the value of role models is understood, a commitment to the institutions of higher education where chapters are located, every facet of Greek life being value based, and the instilling of appropriate self-confi-



dence in our members enabling them to become articulate, thoughtful persons.

The NIC represents member fraternities with over 4,500,000 alumni and 400,000 undergraduates in 5,000 chapters on 810 campuses throughout the United States and Canada. The Conference was founded in New York City in 1909.



Xi Chapter House  
Wesleyan University

#### TALES FROM THE DARK SIDE

(Middletown, CT) Since the time of the Masons, secret societies have often been viewed with suspicion by the general public. Musings concerning the oaths, regalia, and ritual of the organizations resulted in tales of bizarre activities and inspired stories by writers such as Conan Doyle. Were these yarns that far off the mark, however? Not always, as the mystic air of one secret society (one of our own chapters, in fact) has caused a rather nefarious act. A murder has been committed at the Xi . . . well, sort of. For four nights running last October (including Halloween), our Wesleyan brothers hosted a production written by an undergraduate expressly for performance in the Xi Chapter house. The play's action revolved around a number of students billeting in a fraternity house over the holidays. During this rather cloistered time period, tensions rise and a murder is committed. As the drama unfolds, the players proceed from room to room with the audience in tow. The wood paneled rooms and cathedral ceilings of the house provide an ideal ambience of mystery. Those in the Wesleyan community viewing the show were impressed not only with the chapter house but also with the Xi brothers' hospitality and graciousness in amending their personal schedules so as not to interfere with show time.

#### LETTERS TO THE EDITOR

What a delightful surprise to find your excellent piece on the Epsilon Nu Chapter house and, best of all, to find that it was dedicated to Brother "Chris" Christensen.

During my years at Michigan State from 1936 to 1940, I was a member of the old Hesperian Literary Society. At that time Chris was our business manager and also managed a number of other fraternities and sororities in East Lansing. He had retired from a top position in Michigan's dwindling lumber industry and "kept busy" with the fraternities.

During World War II I came home to East Lansing on furlough and went by the house to pay a visit to Chris and perhaps some of the brothers. I got a rude awakening when I dashed up the front stairs to find I had crashed into a sorority! Fortunately, a younger sister of one of my classmates recognized me and saved the day until I could be escorted down to Chris's apartment.

Hesperian had gone National Psi Upsilon in my absence, so Chris immediately got on the phone and rounded up a group of local Psi U's to put on a formal initiation for me. Not only did they induct me formally into Psi U that night, but they also presented me with the badge and the Psi Upsilon ring, which were sent to me back at my Army base.

With this background of only one night as an active Psi U, I do find myself explaining the circumstances when I am questioned on my lack of knowledge of our Fraternity. But I have enjoyed my minuscule affiliation over the years and want to thank you for bringing back some wonderful memories.

Yours in the bonds,

Albert D. Trager, Epsilon Nu '40

Hurrah! for *The Diamond* taking the time to create the feature articles on unique chapter houses of Psi Upsilon. They are a delight to review.

We are a young fraternity (founded 1925) and most of our premier chapter houses have been built in the last two decades. It is interesting to note the difference. No amount of funding today can place some of those architectural designs in a structure.

. . . As Psi Upsilon continues these articles, keep in mind that other Greeks are seeing them and admiring some of the finest structures on our campuses today.

Your undergraduates are to be commended for keeping the tradition of Psi Upsilon intact; improving upon, caring for, and handing down to the next generation of fraternity brothers one of the most sacred of fraternity possessions — a chapter home.

Most interfraternally,

Thomas Schlange, Executive Director  
Beta Sigma Psi Fraternity

. . . I want to congratulate you on that frolicking blurb announcing the new alumni directory — ". . . last seen in Pago Pago, or was it Topeka?" Hot Diggity-Dog! That's a real zinger. How did you ever dream that up? We have a spirited group of Psi U brothers in Topeka. . . . At a recent meeting, I mounted the podium and read your titillating announcement. . . . As I finished, the brothers arose as one, raised their glasses on high, and toasted your originality . . . before you relegate Topeka to the suburbs of Pago Pago, hear this! There was a story in yesterday's *Capital-Journal* about the Washburn University Board of Regents right here in little old Topeka, pondering permission for the installation of condom dispensers in both men's AND women's dormitories [sic]. Mainstream, Baby, we're in the *mainstream* of modern America out here.

George Staebler, Jr., Iota '32



## “Who trod these halls . . .”

*Third in a series of articles featuring some of Psi Upsilon's unique chapter houses.*

### THETA CHAPTER HOUSE UNION COLLEGE

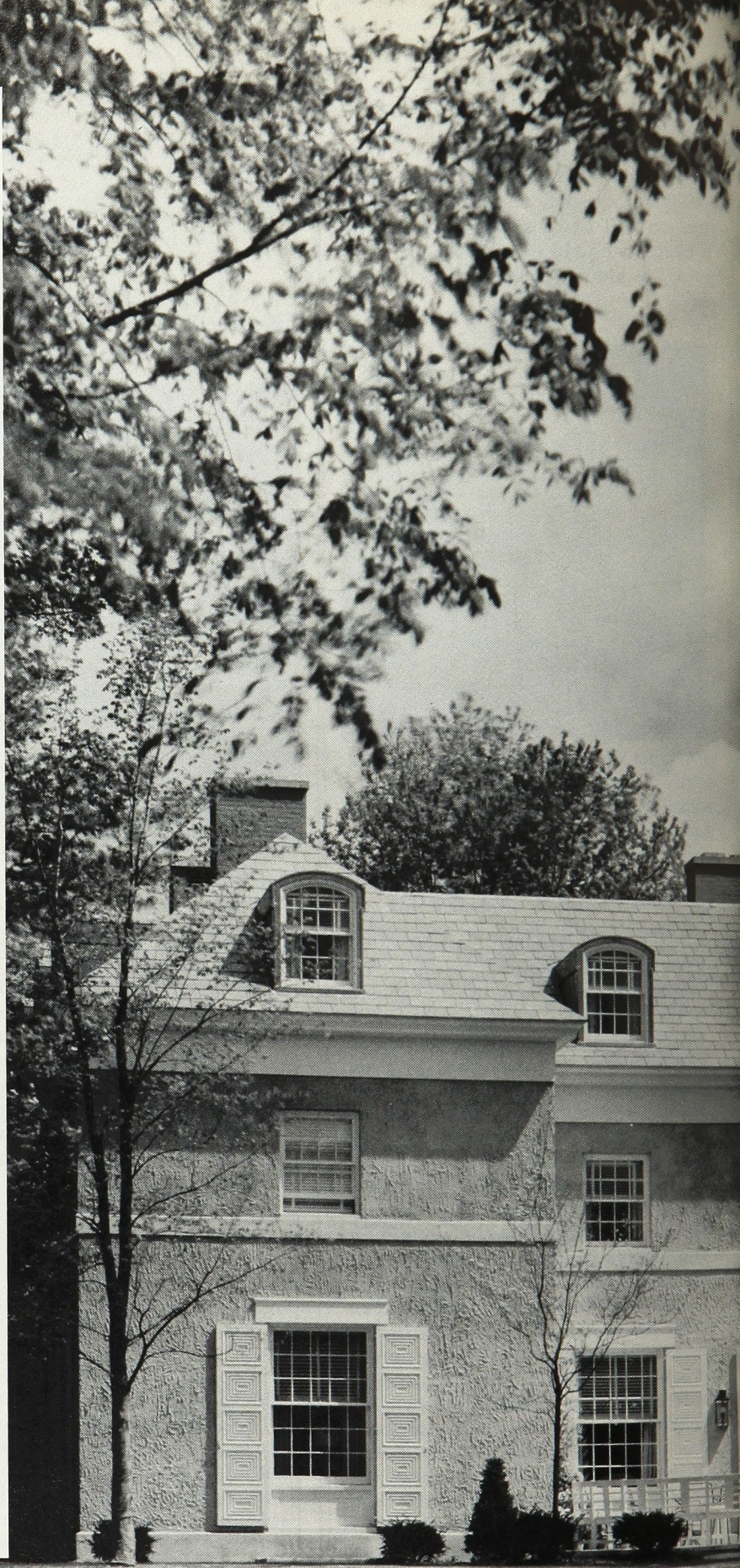
On the afternoon of April 30, 1938, the trustees and undergraduates of the Theta Chapter formally opened their new chapter house on the campus of Union College with a reception and tea for six hundred alumni, faculty, wives, and friends from Schenectady and the vicinity. This festive group celebrated the culmination of a plan which had been conceived even prior to Psi Upsilon's centennial observance in 1933. The mother chapter of our beloved fraternity had a new home.

The magnificent Theta Chapter house was designed by the renowned New York architectural firm of McKim, Mead & White, who also were the architects for much of the rest of the Union College campus. Its style is (appropriately) “Greek Revival,” consisting of two stories with third story dormers and constructed of masonry with a stucco finish. The effect is one of great simplicity and dignity that conforms nicely with the architecture of the older Union College buildings, those designed in 1814 after plans of the famous French architect Jacques Ramee. Built in the shape of the letter “H,” the house occupies the site of the former Theta Chapter house near the center of the Union campus.

The entrance porch is paved in flagstone and bears doric columns setting off an attractive doorway. A small vestibule opens into the large stair hall, a simple two-story room with the stairway curving around three sides. To the left is the dining room, which originally featured antique wallpaper depicting four early American harbors. The paper has long since given way to a more practical wall covering, but the room retains its simple elegance with its carved mantelpiece, unique moldings, and wood floor.

To the right of the main hall is a library, the ends of which have built-in bookcases of stained and waxed pine. The bookcases on the east wall give way to a fireplace featuring an antique pine mantelpiece. This room, like the main lounge and the card room in the opposite wing, opens by French doors onto the flagstone terrace facing the College chapel. The walls of the library fea-

*(Continued on page 20)*







Main lounge of the Theta Chapter house circa 1938.





# THE DIAMOND Goes To WAR

*Fraternities do not exist in a vacuum; they are affected by world and national events, trends in higher education, changes in society . . . the list is endless. One such event of enormous impact in this century was World War II.*

By David H. Rank, Omicron '86

*"Writing this report on the eve of an Axis declaration of war has necessitated the inclusion of several comments which might not otherwise have been made."*

Theta Theta Chapter report, January 1942

The onset of the Second World War shocked the United States out of a sense of tranquility symbolized by the idealism of Woodrow Wilson and the League of Nations, children of the "the Great War." It was a world struggling to rise from the spectre of a menace which had, supposedly, been laid to rest years earlier. As the days and months passed following the German blitzkrieg through Poland, it became increasingly obvious that once again North American troops would find themselves fighting on European soil.

The college man was particularly affected by events in Europe. He and his classmates would be the ones to again fight for the Allied forces. College fraternities, Psi U among them, could scarcely be unaffected by the rise of the Third Reich and the Japanese Empire. The attitudes, feelings, and opinions of these men have been preserved through a medium unique to Psi Upsilon. Throughout the War, THE DIAMOND was published faithfully, every three months. The undergraduate reports of the then twenty-seven Chapters tell the story of World War II through the eyes of the men who would shortly fight in it.

*"Another college year opens in an entirely new atmosphere for those now in the Chapter: an atmosphere of war."*

Epsilon Phi Chapter report, June 1940

As the scope of the War broadened, undergraduates began to pay more attention to world affairs.

While Canadian members were leaving school for military service, Americans were just realizing the nature of the situation.

*"World affairs have caused a change of attitude at the house this fall. Baseball statistics are subordinated to anti-aircraft statistics. National politics take precedence over football bull sessions."*

Sigma Chapter report, November 1940

A November 1940 poll of Psi U's American Chapters found that the undergraduates supported Wendell Wilkie 9-1 and the draft 3-1. Some responses seemed very familiar: "Those favoring the draft seem to be least in danger of being drafted."

*"With the recent shortage of tires, this Chapter will probably eliminate, to some extent, its annual thousand-mile rushing trip."*

Theta Chapter report, June 1942

As American and Canadian involvement in Europe deepened, news of the War occupied more and more the minds of students. As this effort intensified in December 1941, so did the sacrifices required. Some sacrifices faced all Psi U's countrymen; some were unique to college students and fraternity men.

The Theta's rather peculiar complaint does highlight a nationwide concern. Union College was not the only place in the country facing commodity rationing:

*"Though gas rationing and rubber conservation have done their best to hamper our social life, we have held two highly successful dances . . . and, as the draft has diminished our ranks, we have managed to send off each departing brother in true Psi U fashion."*



This report continues, highlighting the positive side of American support for the War effort:

*"The bloodbank, war bond sales, the Enlisted Reserve, have found us all trying to do our part at the Delta."*

Delta Chapter report, January 1943

*"Realizing that our college days are limited and that good times will soon be a thing of the past, all the brothers made Interfraternity Ball on March 6 one grand party. . . . From now on, dances will only be memories."*

Eta Chapter report, March 1943

College students during the Second World War, in addition to the commodity rationing, scrap drives, and Civil Defense drills, sacrificed a "normal" college experience. By the time the war effort was fully geared up, any semblance to this was gone; from almost complete membership in military reserves to the curtailment of social activities to this lament:

*"There was no intercollegiate football this year because some of the University officials thought it would take up too much of the students' time which could be better employed in war work."*

Epsilon Phi Chapter report, January 1942

As the war ground on, these sacrifices were small when compared to the sacrifices made by a growing list of Psi U's.

*"It is hopelessly inadequate only to express our sorrow, but that is all we can say, with the realization that their sacrifice is a great tribute to Psi U."*

Xi Chapter report, March 1945

A memorial list of a quarter page in 1942 would grow to two and a half pages by War's end. This grim reality of war was initially downplayed by most. Eventually, though, as the tolls of the missing and dead mounted, Chapters began to speak of their losses. Perhaps hardest hit was the Omega.

*"Our sorrow was deepened by one more casualty reported from September action in France. The toll of the Omega represents about ten percent of the men to be known in the services. We have ten known to be killed and one prisoner in Germany."*

Omega Chapter report, March 1945

By the time that this was written, World War II was nearly over. Men began to return home to the lives they had been called away from. Many would find their country changed strikingly by the war.

*"News from the Beta Beta is rather limited. Brother Barthelmess and I are the only two remaining, and we're wearing navy blue."*

Beta Beta Chapter report, January 1944

The fraternities to which these men returned had

been as affected as the soldiers. Through the course of the war, more and more men were called away. At first, before full mobilization, men joined reserve units in order to remain in school. This ploy did not last long:

*"The President announced the closing of the reserves . . . a few of the pledges managed to get in under the wire, but the rest are now calculating their chances with the draft board."*

Upsilon Chapter report, January 1943

With conscription in full swing, the lifeblood of the Chapters began to flow out.

*"During the last college year the Kappa had 73 members. Fifty-four have entered service; three will return to college, and the rest are unaccounted for."*

Kappa Chapter report, November 1943

As their numbers dwindled, the whole structure of the Chapters had to be reorganized.

*"The most recent meetings of the Omicron were held at the LaSalle Buffet, Chicago, Illinois . . . we had a lot of fun, there being practically no business to discuss."*

Omicron Chapter report, November 1944

Alumni in and near college towns became active members to insure the simple survival of Chapters. In the absence of brothers and the need for military housing, fraternity houses became prime pieces of real estate. "The Navy," says one undergraduate, "has been casting longing eyes on our house." (Epsilon Chapter report, March 1943) By the height of the war in 1944-45, alumni were entirely running many Chapters.

*"The continuity of the (Zeta) Chapter is being maintained by four local members who are permanently residing in Hanover . . . we are operating on the theory that a fair sprinkling of brothers who left will form the nucleus about which a revived Chapter will be created when conditions permit."*

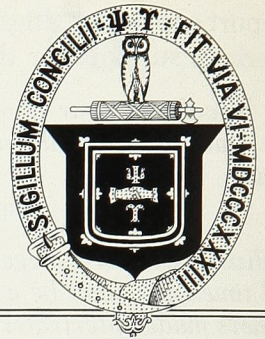
Zeta Chapter report, June 1944

It is truly a tribute to these alumni groups and Psi Upsilon that, despite these hardships, by war's end no Chapter was permanently closed.

The face of America had changed entirely by the conclusion of the War. America's role as one of the two emergent super powers was assured, and global focus had finally shifted from Europe to North America. The forty-odd years since the Second World War have seen tremendous upheavals in American culture. The Cold War, Baby Boom, Korea, Vietnam, Sputnik, and the Beatles have inspired sometimes calamitous changes, but their effect on society, colleges, and fraternities may never compare to the turmoil of the War years.



# EXECUTIVE COUNCIL MEETINGS



The second meeting of the 1987-88 Executive Council took place on Saturday, December 5, 1987, at the Sheraton Dallas Hotel and Towers in Dallas, Texas in conjunction with the 1987 annual meeting of the National Interfraternity Conference. Staff and Executive Council members spent much of Thursday and Friday attending a variety of informative meetings, workshops, and seminars sponsored by the NIC, prior to attending Saturday's Executive Council meeting.

Among the important items discussed and action taken by Psi Upsilon's administrative body were the following:

- Election of Norman J. Schoonover, Theta Theta '46, to the Executive Council to fill the vacancy left by the resignation of James E. Heerin, Jr., Tau '58.
- Approval of the November 30, 1987 balance sheet and financial statement reflecting income of \$118,789.96, expenses of \$105,806.99, and a net worth of \$78,918.15.
- Report of the Insurance Committee that the process of completing an application to secure directors and officers liability insurance for Executive Council members at a cost of approximately \$4,000 per year had been begun.
- Report that the first questionnaire for the updated alumni directory was scheduled to be mailed in February, with a follow-up the next month. The telephone phase, during which representatives of the Harris Publishing Company will verify information on the questionnaire and invite purchases of the volume, will take place this summer, with publication scheduled for November, 1988.
- Report that the Kappa Phi Provisional Chapter at Penn State University had signed a three-year lease (with possible purchase option) on a fine house in a very good location.
- Report that the Psi Upsilon Foundation's capital campaign was experiencing a dry period, due partially to the effects of "Black Monday."
- Report of outstanding chapter assessments in the amount of \$34,760.

- Report on 1987-88 Annual Giving program results to date, which reflect 1,141 gifts totaling \$66,283.50, for an average gift of \$57.94.

The third meeting of the 1987-88 Executive Council took members to the Hyatt Regency Cambridge, just outside Boston, Massachusetts, on Saturday, January 30, 1988. A number of undergraduate members of the Zeta Tau Chapter joined the Council members for the meeting and lunch, as well as for a reception following the meeting.

The following were among the topics raised, discussed, and acted upon:

- Approval of the December 31, 1987 balance sheet and financial statement reflecting income of \$146,133.10, expenses of \$140,594.35, and a net worth of \$69,239.11.
- Discussion of a proposal submitted by the Development Dynamics Group for in-house file maintenance, with authorization to the treasurer and staff to proceed with plans to refine and implement this proposal.
- Approval of a proposal by the Insurance Committee to develop and implement a master insurance program for all of Psi Upsilon's chapters and approval to proceed with plans to secure directors and officers insurance coverage together with The Psi Upsilon Foundation, Inc.

- Unanimous approval of a resolution of appreciation to James A. Swanke, Jr., Rho '80, Chairman of the Insurance Committee, for the extraordinary work he has done in ensuring that all of Psi Upsilon's insurance needs are met.
- Unanimous election of Angelo J. C. DeVita, Gamma '78, to the Alumni Advisory Board.
- Discussion on a proposal for a revised procedure for a provisional chapter to follow in attaining full chapter status, with the motion tabled until the April Council meeting, at which time certain suggested revisions will be incorporated into the proposal.
- Comprehensive report and extensive discussion on the request of the Kappa Phi Provisional Chapter at Penn State University to be granted full chapter status, with decision deferred until such time as the chapter and a specially appointed Executive Council committee can address certain key topics.
- Report by the Alumni Advisory Board that its roster was nearing completion and that it respectfully suggests the theme of the 1988 convention be designated "alumni relations."
- Report of outstanding chapter assessments in the amount of \$33,935.
- Report on 1987-88 Annual Giving program results to date, which reflect 1,715 gifts totaling \$93,987.13, for an average gift of \$54.80.

## DIRECTORY PHONE PHASE TO BEGIN

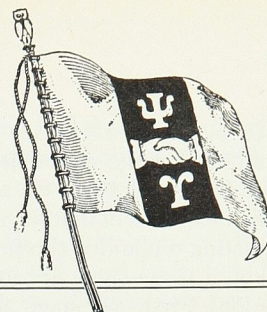
Beginning on June 16, 1988, the Harris Publishing Company will begin making telephone calls to Psi Upsilon alumni for verification of the information to be printed in the new alumni directory, which is slated for release late this fall. At the same time the telephone representatives will be inviting alumni to order personal copies of the volume.

Since the cost of the new directory is self-liquidating through directory sales, these requests are made on the part of the Harris Company with the complete approval of Psi Upsilon. The entire project will be undertaken at virtually no cost to Psi Upsilon Fraternity and, as a byproduct, we will be provided with updated information for our alumni records.

The telephone calls are a follow up to the two questionnaire mailings that were sent to all alumni with verified addresses. If you have not received a questionnaire, please let us know.



# THE CHAPTERS REPORT



*For this issue of The Diamond, each chapter was asked to respond to the question "What is Psi Upsilon doing to enhance student life at your college or university?"*

## THETA Union College 1833

As the winter holiday spirit slowly left the brethren of the Theta, several projects for the brotherhood were undertaken. Most importantly we began the process of fraternity education. The Theta has pledged eight fine young men who have begun the process of learning and incorporating the values of Psi Upsilon. Weekly work nights with the brotherhood give time for both brothers and pledges to work together on various housecleaning and construction jobs around the house. Thursday night formal dinners are followed by discussions of the history and current events of the fraternity.

Also undertaken recently was the job of moving our cramped barroom into the more spacious billiards room in the basement. With no outside help, only a little knowledge of carpentry, and an intense undergraduate effort, the complex job is now near completion, both ahead of schedule and under budget. I have been overwhelmed with admiration for the efforts of the brethren on this major undertaking.

As my days as president come to a close, it is interesting to look in retrospect at the year gone by. Many successes have outweighed the new failures incurred. This was a term in which extensive renovations were completed, delegates were finally sent to the convention, a successful charity event was held, and liquor liability insurance was obtained. It is important to note, however, that all of these tasks were undertaken somewhat blindly by the brotherhood. The input of alumni with their "real world" experiences would have and still could prove invaluable to the Theta. Specifically the Theta needs a core of local alumni to assist with special projects, budgeting, and relations with the school administration. As made evident by the alumni contingent of other chapters at the convention, the Theta could be much more than it is. Instead of merely being undergraduate brothers

balancing their duties to the house with a full course load and just barely keeping its head above water, the Theta could be a chapter of active undergraduates and alumni, working together to push the chapter to heights not obtained since years long past.

*David M. Anderson '88  
Past President*

## DELTA New York University 1837

Greetings from the Delta Chapter. Since the last report in *The Diamond*, the situation at the Delta has been one of steady growth and improvement. The brightest spot has to be that more and more alumni are stopping by our loft in the fraternity center. It was also encouraging to see such a large contingent of alumni at the convention this summer. The convention was held without a hitch as undergraduates and alumni worked together to make Psi U brothers' stay in New York as enjoyable as possible. The undergraduates extend their sincere thanks to those alumni who helped our effort and those brothers who do not live in the city but who gave us moral support during our phonathon.

The undergraduate chapter has grown from 17 brothers only four years ago to nearly 50 today. This growth can be attributed to the dedication of the Delta brothers and the increased interest in Greek life on campus. With our larger numbers, we have been able to broaden our horizons. The Interfraternity Council

has been dominated by Psi U over the past two years and should continue to be as our delegates play an active role in its workings. We have enjoyed an officer position on the IFC board for two years, and elections in April may extend that to three years. Delta brothers are found in all major positions on campus — Wayne Caplan '88 as vice president of Ruben Hall, Eric Pachter '88 as resident assistant at Judson Hall, and Mark Rubin '88 as vice president of WSUC student council. James Macaluso '88 is captain of NYU's new hockey team, which is winning over half its games in only its second year.

As of January, Jeff Fazio '89 took over the presidency of the chapter. In just a short period of time he and his administration have had a positive effect on the chapter. Our charitable programs have been greatly improved as the brothers are prepared for two to three service events in the spring. James Mairs '90 has sent out a spring rush letter to the over 400 Delta alumni. If you have not yet responded to our letters, I would like to take this opportunity to urge you to do so. The funding you provide is used on two full weeks of well planned dry rush events.

This past fall, the question of a new house was once again raised. University officials picked Psi U out of 11 fraternities on campus to study a move of the fraternity center to Third Avenue North, a new dorm. We strongly opposed the idea, which subsequently was dropped by the university. This move would have caused our fraternity space to be further reduced, to about 25% of what was avail-



"Welcome Brothers Old and Young. . . ." Delta brothers gather for the annual Yule Log Ceremony.



able in the Poe House. While we are grateful that the university consulted us and respected Psi U as a leader of fraternities, we feel that we must begin formulating a plan for the future. We have taken a three-stage approach to our situation. First, we have decided to improve our present home by painting the trim of the house in garnet and gold, and we also are drawing up plans to build a library/executive office out of part of our common space. Second, we have renewed talks with the university on our intention to find a permanent home. Third, we are lobbying to have the Third Avenue North space given to fraternities that have no housing at all.

In closing, the Delta has been very active on campus and is working diligently to preserve its leadership position at NYU. With your support and our hard work, we feel we will only improve our standing.

*Joseph S. Barbera '88*  
Past President

## SIGMA

**Brown University**  
1840

Fraternities at Brown have faced the challenge of earning the respect of a critical student body. Greeks here have come a long way in the past two years, and the young Sigma Chapter is responsible for a major part of the system's success. Individual brothers and the chapter as a whole have improved the reputation of all Brown fraternity members through their participation in both Greek and campus activities.

This year Michelle Dandridge '88, as chairperson of Greek Council, has led the group in a campaign to clear up misconceptions about fraternities and make them more attractive to different types of freshmen. Social Chair Kathy O'Keefe '89 is leading a committee to sponsor an all-Greek formal, an unprecedented event.

Fraternities can gain more respect on campus if their members are diverse and contribute positively to campus activities. Most Psi U's at Brown have at least one major activity in their schedule besides schoolwork and the house. A few examples of Psi U go-getters are: John Euler '90, state chairman of College Republicans; Darlene Netcoh '88, president of the marching band; Danielle Horton '89, coordinator of the Brown Big Sisters program; Chris Lowy '89, vice president of the debate team; Steve Klinenberg '90, director for Brown cable television; Karen Lee '88, president of the Brown chapter of the American Metals Association; and, most recently, Alex Wright '88, founder, president and organizer of the Brown

Ping-Pong Club and annual tournament.

The Sigma Chapter extends deep gratitude to all of its alumni who contributed to a recent drive for house renovation funds. We have just bought a large screen television, which we have in our library. This new TV room will serve as the first real common room the new chapter has had — a place where brothers can just "hang-out" — and we're sure this will lead to great camaraderie. With the remaining funds we plan to buy new carpets and track lighting. Again, thank you to our generous alumni; the house is finally coming together, and it looks fantastic.

*Carolyn A. Foug '89*  
Past President

## GAMMA

**Amherst College**  
1841

Given the rather unique situation in which the Gamma Chapter finds itself at Amherst, it is rather difficult for us to gauge our contributions to campus life. Since the college's unfortunate decision to abolish fraternities in 1984, it has been impossible for Psi Upsilon to officially sponsor any events — from parties to guest speakers — on the campus itself. An all-campus event at our rather modest off-campus residence would be virtually impossible.

Instead we try to offer students a supplement to on-campus activities. Amherst has a great deal to offer, and we don't try to compete with college-sponsored activities, but there are still many of us who feel that the absence of on-campus fraternities has had a negative effect on the quality of student life. We continue to hope that someday the college will recognize its error and welcome Psi Upsilon and the other fraternities which still exist here back onto the campus, or, at the very least, will recognize us as legitimate off-campus alternatives which have a positive impact on campus life.

In the meantime, however, we are content to exist independently, and we encourage all of our members to participate in a variety of campus activities. Many of the brothers are active in athletics, clubs, and student government. In addition, we do our best to have a positive influence on the community — most recently by visiting a local nursing home during the holiday season. After a few years of uncertainty, the Gamma Chapter is now officially back on its feet and beginning to grow again. As we look forward to another spring rush season, the prevailing mood has changed from frustration to optimism, and it is now clear

that Psi Upsilon at Amherst will continue to prosper, with or without the support of the college itself.

*Michael R. Byrne '88*  
President

## ZETA

**Dartmouth College**  
1842

The contributions of fraternities, sororities, and co-educational houses remain an essential ingredient to the distinctive and vital Dartmouth campus. Although the positive influences of such organizations are often understated, both here in Hanover and on an international scale, those of us in the Zeta Chapter continue to value our role as active participants in the student life of the college. We prize our past tradition of prominence in this area, and our contributions to the campus are ever becoming more numerous, diverse, and far-reaching.

The centerstone of our commitment to the college and the community is our annual summer camp for diabetic children in the Upper Valley. An enriching experience for both the brothers and the kids, this extended weekend exemplifies what summer should be — canoeing, swimming, sailing, playing volleyball, and, of course, participating in the famed Psi U mini-Olympics — all against the background of budding friendships. In addition, the campers hear instructional talks by representatives of the local Mary Hitchcock Memorial Hospital concerning the nature of their disease and its proper treatment.

The success of this camp has been enormous and has not gone unnoticed. In fact, this fall Psi U received the Community Service Award from the college's Office of Residential Life, given to the house which has maintained "an exceptional standard of community service." Also, the American Legion Hartford Post #26 presented its 1986 Humanitarian Award to the Zeta Chapter for its dedication to the service of diabetic youths in the Upper Valley.

Ice in winter provides the means to run this warm, summertime event. Funds raised from the annual Psi U Barrel Jump on the Zeta's homemade ice rink are used to meet the camp's expenses. The keg jump consistently draws the biggest crowds of Dartmouth's Winter Carnival Weekend, and our massive rinkmeister, Paul Sundquist '90, worked diligently to make sure that the jumpers had a smooth runway for their gravity-defying escapades.

But the Zeta does not spend all of its efforts at summer camps and winter fro-



icking. Last term we held a discussion and slide show about a safari in Kenya, and sponsored a talk with the Hanover Police Chief on subjects ranging from drunk driving to speed violations. Recent elections produced a strong programming chairman in Jimmy Yu '90, and he has begun the preliminary work to construct another solid schedule of educational and cultural events. Also, we plan to initiate a chapter policy of entering into year-long relationships with academic departments of the college. For the three terms of the year, the Zeta will co-sponsor lectures and presentations, make available relevant information, and host social events with a specific academic department. Such a relationship will provide both an opportunity for the faculty to begin to understand the house better and a chance for the brothers and the student body to relate to the professors in an arena outside of the classroom.

In addition to these contributions to the campus and the community, we have maintained work on improvements to the physical plant. Our big project now is the remodeling of a portion of our basement into a pool room/eating area. A contractor has been hired to do the construction, but the preliminary preparations were completed by Zeta brothers, led by Past President John Herrick '88 and Past House Manager Jay Kleeman '88. The room should be completed by spring, and we all look forward to spending our free time down there shooting pool and bull.

Attention to this and other house projects has been more focused recently because the administration's Minimum Standards Review Board will be visiting the Zeta once again this spring. Their scrutiny will meet a house in perfect order, both in its physical plant and leadership structure. In our preparation for this review, we keep in mind that we are striving above the college's minimum standards to meet Psi U's maximum expectations.

The activities of individual brothers continue to shine for old Psi U. Tom Foote '87 is back from his stay in Europe with the United States Ski Team and is still winning races with the Dartmouth squad. Similarly, 1986 NCAA giant slalom champion and three time All-American Miles deChamps '87 has returned from Sweden to resume his studies here in Hanover and help coach the ski team in his spare time. Two of his pupils, Pete Van Alstine '90 and Scott Bonz '89, are competitive in carnival action. John Burke '90 stars for the squash team, having worked his way to the number three position. Many other Uies prepare for their respective lacrosse, crew, tennis, track, soccer, and football seasons.

All in all, Psi U thrives at Dartmouth. Our contributions to all aspects of the campus truly enhance student life. We reminisce about the past, enjoy the present, and work to improve the future.

David M. McKenna '89  
President

## LAMBDA Columbia University 1842

Greetings from the Lambda! In this chapter report we have been asked to answer the question "What is Psi U doing to enhance student life at your college or university?" We here at the Lambda feel that this question is at the heart of why we exist as a fraternity.

Certainly there seems to be a selfish nature to the idea of a fraternity — a group that bonds together around common interests to promote the good of the group and its members. This comes very easily to the men of the Lambda. Never in my life have I personally witnessed such camaraderie. But it is this strength of our group that makes us quite extroverted. The group is not selfish at all. The social nature of our fraternity has two facets — first, the strength of the brotherhood and second, our relationship with our non-brother guests. It is this relationship with our college community that is our contribution to college life.

There is no doubt that fraternities play a major role in the social atmosphere of a campus. The social committee of the Lambda tries to take this one step further. While other fraternities on our campus relish large impersonal liquor-soaked events, we feel uncomfortable in their "bar" atmosphere and look for something more. Our chapter house is our *home*, not a dorm or a playground. We think of Psi U as our little bit of sanctuary in the coldness of academic rigor here at Columbia University. In our chapter house, we can relax and enjoy the company of good friends, our Psi U brothers. We enjoy having get-togethers just as our fellow fraternities do. But our functions are smaller and guests are personally invited. We try to make our guests feel like welcomed friends, not customers. The smaller-sized parties allow our brothers' personalities to be the entertaining factor — not the loudness of our music or the amount of booze behind our bar. Several of our guests have commented on how impressed they were that we remembered their names after the party. They feel comfortable in our home. Our approach is also very productive in rushing "brothers" and not "members."

Although our social efforts could not be an all-encompassing factor in student life,

people seem to feel good about being around the Lambda here at Columbia. We provide an alternative to the impersonal tendencies of other outlets on campus. Our friends feel at home with us. We reap one of the most basic benefits of fraternal life by allowing our personalities to grow. The brothers of the Lambda enhance student life at Columbia simply by treating people like people.

Patrick G. Dineen '88  
Past President

## KAPPA Bowdoin College 1843

The 1987-88 academic year began on a peculiar note as College President A. LeRoy Greason launched unexpected indictments of the Bowdoin fraternity system during his Convocation address. Greason characterized fraternities as havens of alcoholism, sexual discrimination, anti-intellectualism, and countless other poly-syllabic atrocities. Unfortunately, in the face of such criticism, any proactive measures undertaken by fraternities can easily be dismissed as tokenism.

Nevertheless, the Kappa continues to be a key cog in the machinery of Bowdoin College by extending offerings to students, alumni, faculty, and the community of Brunswick.

One of the most controversial issues in the recent history of Maine involved the viability of the Maine Yankee nuclear power plant in nearby Wiscasset, Maine. A referendum was scheduled for November 1987 asking Maine voters if a plant that produces high levels of hazardous waste (like Maine Yankee) should be allowed to operate. Knowing that there were many students on campus who were registered to vote in Maine, the Kappa saw the need to draw students closer to the issues. What ensued in October was a "high powered debate" (as headlined in the *Bowdoin Orient*) held in the chapter house, which featured a representa-



Kappa Chapter House  
Bowdoin College



tive from Maine Yankee and a representative from the Citizens Monitoring Network of Safe Power for Maine. As expected the debate elicited a strong turnout of Bowdoin students and Brunswick residents.

Other items of interest include the efforts of Jennifer Goldsmith '90, who organized women fraternity members into a coalition that aired its views at a public forum presided by a board convened for the purpose of fraternity review. The women commanded the respect of the student body when they produced a petition signed by over ninety percent of the women in fraternities, a document which vehemently denied any alleged discrimination of women in fraternities. Further congratulations go out to Goldsmith, whose efforts secured her a landslide election to Interfraternity Council President for the spring semester.

On a festive note, the Kappa staged its annual bacchanalian bonanza that is Homecoming Weekend. Recent alumni were pleased to find that Chef Lester Prue, now in his twelfth year, is still the driving force that impels the house through its daily activities. Without Lester, life and cuisine would be a lot duller at the Kappa.

With the arrival of a diligent liquor inspector on campus, the Kappa had to monitor itself more closely. However, we still managed to pull off several successful Thursday night parties, not to mention the annual All Hallow Eve costume ball, which featured the music of Earth Bob's Pig Band, a talented quartet whose members include Edwin Staples '89 and Robert Ruiz '91.

The Kappa initiated eleven new members this semester: Jennifer Horner '89, Elizabeth McGhee '89, Anne Burnham '90, Rachel Dobkin '90, Lisa Howell '90, Matthew Samuelson '90, Arlen Johnson '91, Tina Rodfong '91, Wilford Saunders '91, and Suzanne Walker '91. With these new members we hope that the Kappa will continue its tradition of excellence.

*Peter A. Gergely '89*  
President

## PSI Hamilton College 1843

The Psi Chapter has done a number of things to try to create a better living environment for students at Hamilton College. Recently we initiated a new community service idea which deals with alcohol responsibility. This service is known on campus as Psi U Safe Rides. It allows students who are drinking at bars downtown to get home safely instead of risking their own lives as well as those

of fellow students. This service is performed every Wednesday night from 11:30 p.m. to the closing of bars at 2:00 a.m. Thus far it has been very successful and has received positive feedback.

February brought one of the biggest events for the Psi Chapter. On the last Thursday of the month we threw our annual St. Thomas party, which is always a hit. The students get very excited about it, considering they are sick of the snow and cold weather and have an opportunity to win a four-day, three-night trip down south. The proceeds from this party go to the A Better Chance House, which is located on campus.

This year has brought on a very solid freshman class and we look forward to having a very strong pledge class. The calibre of our members makes Psi Upsilon a highly respected house on campus, both from the perspective of the students and the administration.

*William K. Plumb '89*  
President

## XI Wesleyan University 1843

As 1987 came to a close, the Xi remained strong internally as well as on the Wesleyan campus. The end of the semester was highlighted by the initiation of 23 new brothers, one of the largest groups in the Xi's history. The new brothers have helped bolster an already well-rounded brotherhood, one that has leaders in a variety of campus activities. We were happy to have in attendance at the initiation banquet Russ Robertson '62, Dave Jones '83, Willie Kerr, Iota '57, and Joe Rumberger, Tau '46.

Financially the Xi has managed to keep its head above water and pay back the alumni most of the insurance bill they were kind enough to pay. Steve "Tacks" Cornell '30, Chip Stone '46, and Don Smith '39 have been working hard to try to devise a way to replace all the windows in the house, which will be both cost effective and aesthetically pleasing. Any suggestions will be appreciated.

The brotherhood recently traveled to the Beta Beta Chapter for the annual Wesleyan-Trinity football game. Although the game was not the most exciting in recent memory, we still managed to have a great time at the Beta Beta. During the semester the Delta Chapter came up for homecoming, and some brothers of the Psi stopped by after the Hamilton-Wesleyan football game. This winter several Xi's will be leading Wes to victory in various sports. Peter Alberding '89 has led the basketball team to a record breaking 5-0 start, averaging

over 20 points a game, with the most dangerous three-point shot in New England. Steve Grahling '91 is a starting forward on the hockey team, and his brother Jeff '91 is a goaltender. Andrew Dyer '91 is vying for a starting position on the wrestling team. Also, a revamped intramural hockey team, led by ex-varsity stars Brian Gottlieb '88, Steve Patch '89, and Dick Reece '90, hope to end the DKE reign and come home with a trophy.

Please stop by if you are in the area or drop us a note so we can read correspondence at chapter meetings. We enjoy hearing from you.

*James Rumberger '88*  
Past President

## UPSILON University of Rochester 1858

Those of you who had the pleasure of attending this past summer's convention, so kindly hosted by the Delta Chapter, will remember the entertaining and educational alcohol workshop presented by Mike Green. We here at the Upsilon had the opportunity to invite Mike to address all the pledge classes of Greek organizations at the University of Rochester. Funds from the Hood Harris scholarship fund made the event possible. The director of Greek affairs at the University of Rochester called it "one of the most successful pledge programs we've had here." Mike also spoke separately at the chapter house.

The brotherhood, led by Second Vice President Michael Daley, is once again contributing to the Rochester community through various fund-raising activities. Our annual Easter egg hunt for children of the Mount Hope Family Center provided local underprivileged kids with an afternoon of fun and surprises. This included a visit from the Easter bunny. Mike also has a kickball tournament for charity in the works.

In February the Upsilon sponsored a



The Upsilon Chapter was well represented at last year's convention at NYU: Chris Walsh '88, Peter Daddabbo '88, and John Brown '75.



beach party combined with a raffle to benefit the Cystic Fibrosis Foundation. Prizes were awarded to everyone who donated to this cause, including a last-minute spring break trip to Puerto Rico. Much like our previous beach parties, this year's bash was a huge success. Any additional donations from alumni and friends would be greatly appreciated.

The brothers of Psi Upsilon continue their tradition of campus leadership. We have teaching assistants in various fields of study, student government leaders, future military officers in ROTC programs, and members of other student organizations. The Upsilon also boasts athletes on a variety of varsity teams, including contributing members on the football, basketball, track, golf, squash, crew, hockey, tennis, and volleyball teams, along with captains of the lacrosse and baseball teams.

Finally we would like to welcome the pledge class of 1991. Our most recent addition to the fraternity was initiated on February 19, 1988. We feel that these 14 individuals will contribute a great deal to the Upsilon Chapter. Congratulations new brothers!

*Douglas E. Weigel*  
President

## **IOTA** Kenyon College 1860

Psi Upsilon is thriving at Kenyon College. The brothers of the Iota are a progressive force in helping establish necessary institutions and programs for insuring a better quality of life at Kenyon. After a recent violent attack at Kenyon, Psi U and two other fraternities agreed to raise \$1,000 to help pay for a shuttle service for students who do not wish to walk home after parties on Friday and Saturday nights. The Iota was also instrumental in forming an escort service for students on week nights, again in response to the attack. Through our actions we feel that women and men will once again feel safe to walk home.

Certain individuals of the Iota are on committees to analyze and improve life at Kenyon. Sandy Spandevchia '89 and Paul Clark '88 are on a committee which is looking to improve the position of women at Kenyon College. Both Sandy and Paul, as fraternity representatives, are working to identify how we as a group can make equity an assured thing for all students at Kenyon.

The executive council of the Iota, with a lot of help from other members, is working on a proposal to deal with the problem of underage drinking at Kenyon. With the change in the drinking age

in Ohio, the problem of fraternities and other groups abiding by the law has become a serious one. The Iota has drafted a proposal which we hope will be approved by the deans, president, and school senate. It is the goal of the Iota to come up with a proposal that will make Kenyon a safer place for the individuals as well as the group.

Perhaps the most important thing that the Iota contributes to the campus is a social life. Kenyon College is located in Gambier, Ohio, which is the smallest college town in the United States. The nearest city is over one hour away. For this reason students need a place to socialize, and Psi U helps by hosting numerous events. We feel that, because of the isolation and modest population at Kenyon, there is a need for activities to unite the campus. Our parties, which are immensely popular, help people come together and relax.

*Paul L. Clark '88*  
President

## **PHI** University of Michigan 1865

The Phi Chapter of Psi Upsilon Fraternity enhances student life at the University of Michigan with the diversity of its members, our philanthropic activities, and also our social functions. With active members in a number of student organizations, the Phi is well represented on campus through these individuals. The student government, the sailing team, Navy and Air Force ROTC, and varsity track are just a few of the organizations and teams which benefit from the contributions of the members of the Phi.

Philanthropic support is very strong within the Greek system here, and the Phi annually sponsors events which benefit local and national charities. This coming Greek Week we will be sponsoring the second annual Limbo Contest with Kappa Kappa Gamma to raise monies for the Ronald McDonald House. Also, tentative plans are being made to hold our annual volleyball tournament this spring. The Phi is also very receptive to aiding other fraternities in their philanthropic events, such as participating in the Sigma Alpha Mu Slam Dunk Contest.

In addition to improving student life by the involvement of Psi U's in extracurricular activities and philanthropic events, the Phi also improves student life through its very popular social events. Our Founders' Day dinner, celebrated with the Epsilon Nu once again, was a big success, as was our annual Valentine's Day Flyaway Party and our Parents' Party. We proudly initiated nine new

members into the brotherhood this winter, after which we held another successful rush.

*Mark K. Huhndorff '88*  
President

## **OMEGA** University of Chicago 1869

Activities at the Omega Chapter have been many and varied, ranging from a charity football tournament to a faculty mixer. The Omega Chapter raised \$400 for a weekend tournament sponsored by the Nick Bonicotti fund for paralysis. The team went 3-0, including victories over the starting upper and underclassmen for the U.C. varsity football team, 19-0 and 23-0 respectively. After these games the team played in our annual alumni game. Once again the Omega alumni were too strong for mere undergraduates. Superior coaching by Fred Tremmel '75 and the sure hands of Dennis "Anthony Carter" Walden '69 were too much for us. The only injury in the game was sustained when Charley Nelson '73 attempted to block a brick wall.

The chapter sponsored a mixer with the university faculty to uphold its fine relationship with the deans and professors. Other activities included a mixer with the Korean Club and events with the two sororities on campus.

We are now in the process of refining the newly implemented fraternity education program that was developed last year by Brothers William Gantz '87 and Samuel Tinaglia '88. This year's pledge class is stronger than ever, due to the hard work of our two outstanding chairmen, Adam Smedsted '89 and Doug Jackman '89.

At present the chapter is working hard to improve its alcohol awareness policy; Brother Doug Logan '90 is the leading activist in this movement. Brother David Leifer '89 has led a move to improve the chapter house's interior. His system, funded by the general brotherhood, calls for minor repairs and renovations.

This spring the Omega Chapter will be hosting events to raise money for Wyllers Children's Hospital. The proceeds will be allocated for a playground for handicapped children.

*Edward M. Ruder '88*  
President

## **PI** Syracuse University 1875

The Pi Chapter, located in the heart of the Syracuse University campus, has established itself as a leader among the



S.U. Greek system. The men of the Pi take very seriously their reputation on campus as well as in the community, and actively seek new areas to contribute to both.

One goal we have is to continue improving the image of Syracuse University in the eyes of the people in the surrounding community. One way of achieving this is by gaining positive exposure, doing things that people will notice and which will reflect positively on the house and the university. Throughout the past semester, many brothers have been donating time each week to aid the efforts of the Syracuse chapter of the Ronald McDonald house, helping in areas such as house and lawn repairs. Other events include a Christmas party for underprivileged children in the Catholic Youth Organization that is held at the CYO building in downtown Syracuse. This event turned out to be as much fun for the fifteen brothers that participated (including our own version of Santa) as it was for the kids.

While there are many worthy off-campus charities, there are many on-campus charities as well. The Pi led the way this past semester by organizing a campus-wide softball tournament to benefit the research underway for a handicapped student with a spinal cord injury. The event brought ten houses together for an afternoon of fun and laughs, while raising close to \$500 for the cause.

The major way we feel the Pi contributes to Syracuse University is in a more passive manner. The Pi leads by example. We have a reputation for being a very close house; in fact we won the

Chancellor's Award for chapter unity last year. We have a reputation for being fun and for being gentlemen, all things that are earned through efforts on our part to create a positive image of fraternities. Whenever the Pi participates in any function, we always show up with tremendous psyche and unity; we have a way of always banding together, and people recognize this. A common question asked of us by other houses is "How do you do it?" This question cannot be answered; it is just the way of the Pi Chapter and has been for many years. By inspiring other houses on campus to strive for excellence in the manner that we have is the true way that we at the Pi feel we contribute to a better Syracuse University.

As always, we wish all a fantastic semester. Please stop by to see us; you are always welcome at the Pi.

*Mark L. DiPasquale '88*  
President

### CHI Cornell University 1876

At the Chi we have been enjoying much success of late. Our plan for slow, steady growth for the house has brought us into the ranks of the very best fraternities at Cornell. It is truly a difficult task to build a well-respected and well-established fraternity on a campus which already has nearly fifty others, but we feel that we have something much more than just a house and a small group of friends which grows every year. One significant problem that we do face, however, is tem-

pering the desire to have many large scale parties which will help us to further our social reputation with our responsibility to abide by strict campus and community alcohol regulations.

Since the drinking age in New York was changed from 19 to 21 in December of 1985, our own campus police and other authorities from the city of Ithaca have been cracking down on under age drinking. We, therefore, must be extra careful to guard against any violation of this law at our parties. The way that we control drinking has proven to be effective because the members of this house are very dedicated to our responsibility to the community and the fraternity. First, Cornell requires that we register every party with them at least one week in advance. We are also required by the university to have "invitation only" parties. To abide by this, a small number of invitations are printed and distributed to the brothers, each of whom is able to give one invitation to each friend whom he wants to come to that party.

The second part is all up to us. Once these people step in the door, they are completely our responsibility. We hire two bouncers who have no affiliation with the house to stand at the front door and admit guests and check identification for drinking. By having bouncers at the door, we eliminate the problem that could arise if someone tried to enter the party without an invitation by just saying that they knew "so and so." Also, it avoids the uncomfortable situation that could come about if a friend of a brother showed false identification or tried to drink. At the door, these bouncers stamp the hands of those people who have shown proper identification to drink. If they cannot produce such I.D. they are not stamped. Incidentally, our stamp changes with each party so people cannot "make their own."

The final test is at the bar downstairs. Several days in advance of the party, a sign-up sheet for bartenders is posted by the social chairman. Working in half-hour shifts, two brothers serve only those people who have been stamped with our stamp; others are denied. It is a simple one stamp for one beer exchange; that way people with stamps cannot get beer for those without stamps. Also, no one else is allowed behind the bar during this time — not friends, not members of the sorority we are having the party with, not even brothers getting themselves a beer. It sounds a little bit harsh, but it works and it is our responsibility.

I hope that other chapters have a system which works as well for them. If not, they should consider seriously a plan such as ours because we all have a lot to lose in these days of strict alcohol regulation.



The brothers of the Pi Chapter and their caddies pose before the crank-off campus-wide golf tournament.



If we at the Chi can be of any assistance, please call or drop by anytime. Good luck in the semester ahead.

*John C. Sparling '89*  
President

## BETA BETA

Trinity College  
1880

The 1987-88 academic year has seen the Beta Beta continue to be active on the Trinity campus. As in the past, the Beta Beta orchestrated the Red Cross blood drive on campus, continuing a tradition that has proven beneficial to the school, the fraternity, and the Red Cross. Run this year by brother Eric Kozak '89, the drive brought in 130 pints of blood and earned the Beta Beta an Award of Merit from the American Red Cross. Special thanks should go to Brother Kozak and equal mention to the entire brotherhood who volunteered and donated throughout the day.

Perhaps more than any singular achievement, it is the unique group of individuals who comprise the Beta Beta that continually enhances daily life at Trinity. As the Beta Beta strives for diversity in its membership, the fraternity makes its presence felt in various walks of school life. Brother Ross Burdick '88 is the program coordinator at Trinity, the student who oversees all resident assistants and who works closely with the administration on matters of housing, dorm life, and the like. T. J. Turner '88 served a very successful term as president of the Interfraternity Council at Trinity, continuing Psi Upsilon's tradition of close interaction with other fraternities and sororities. Scott Goldsmith '90 was recently elected president of the sophomore class at Trinity. Russ Alderson '89 exhibits his bass skills with Trinity's premier student band. In athletics the Beta Beta continues to be widely represented with Brothers Tom Fitzgerald '88 and Mark Weiland '88 captaining men's basketball and wrestling, respectively. This is only a partial list of achievements among the Beta Beta's membership, but it is representative of our understated yet significant influence on the Trinity campus.

Socially the Beta Beta is keeping a long and serious tradition alive and well. Re-emphasizing the important notion of the Beta Beta's responsibility as a social outlet on the campus, our events continue to attract an eclectic crowd who looks forward to leaving their academic troubles at the basement door. Each passing semester holds distinct memories of brothers and friends enjoying the Beta Beta at different times and in different

ways, and I am sure that the new semester will soon produce many memories worth keeping.

Perhaps the most significant aspect of the Beta Beta this year is our attempt to restore the great yellow house at 81 Vernon Street that has been our home for so long. We feel that for many years the house has served us well, and as it begins to show its age it is up to us to ensure that it remains in deserving condition. First semester President Jim Parmelee '88 helped to focus the brotherhood's attention on the issue, and with the help of Brother Burdick and a host of others we have begun to involve the alumni in a drive that is equally their concern as it is ours. We have accomplished much, and there is much left to be done. As 1988 progresses, I feel sure past and present Beta Beta's will work together to keep their historic house in a condition worthy of its notable place at Trinity.

*E. Hutchinson Robbins, Jr. '88*  
President

## ETA Lehigh University 1884

Eta's have enhanced life on Lehigh's campus in many ways this past semester. Brothers are involved in numerous clubs, organizations, and societies. Past President Vin Farese '88 is secretary of Tau Beta Pi, the engineering honor society, and Bob Kanuga '88 and Scott Hall '89 are also members. Brother Hall is also past president of Lehigh's International Club, with Neil Harrison '89 being the current president. Several brothers are also founding members of their organizations. Alex Ioffe '89 is founding president of Lehigh's debate club, Jeff Gendel '89 is founding president of Lehigh's floor hockey club, and Mark Redmann '88 and Dave Delano '88 are founding members of the fast break basketball fan club. Two brothers, Gary Sadavage '90 and Tom Mostek '90, are members of Lehigh's cheerleading squad. Eta's have also been active in many other clubs, including WLVR-FM, fencing club, Lehigh I.F.C., jazz band, marching band, and Lehigh's newspaper, *The Brown and White*.

Off campus, we have been involved in some fun and helpful events. Eta's helped out for the third consecutive year at the Bethlehem Jaycee's Halloween haunted house, helping to make this year the biggest and best ever. We also worked again at the Good Shepherd Home on Super Bowl Sunday.

Lehigh-Lafayette weekend was a big success. Not only did we win the game, but the Eta was able to retrieve one of the largest pieces (10'4") of the goal posts.

We had a fantastic turnout and hope our alumni continue to come back to the Eta.

We extend an open invitation for brothers from other chapters to stop by. We look forward to seeing you.

*Jeffrey S. Gendel '89*  
Assistant Editor

## TAU University of Pennsylvania 1891

No report received.

## MU University of Minnesota 1891

We at the Mu are still riding the tide of the Chapter's most successful fall and winter quarters in recent memory. Our new found prosperity is due to exceptional individual and group efforts. Brother Scott Walker '90, our rush chairman during this period, was responsible for the Chapter's resurgence with 16 newly initiated members and three new pledges. This new membership, combined with the valiant efforts of our treasurer, John Price '89, and our alumni advisor, Phil Moran '84, have allowed us to begin to address our financial problems. Our new members have excelled in their philanthropic endeavors, as well, by leading an all-Greek drive for cerebral palsy.

Academic Chairman Mike Shafer '90 has created new scholastic programs and study groups which have emphasized dedication and hard work. Mike has led by example, showing us what a little effort can do. Taking Mike's example was Brother Bill Prince, who graduated with a degree in mechanical engineering. Bill is entering the Navy to work on nuclear submarines.

In athletics we have fared very well. Our football team passed its way to a third place finish in the All-University championships. Our hockey team is currently undefeated thanks to the blades and stick handling of Tim Cline '89 and James Paugh '89. We have also fielded a strong broomball team which is carrying an early 1-1 record.

We do, however, have one persistent problem at the Mu. Our cook, Chris, has been constantly tantalizing us with his irresistible concoctions. This has been the cause of widespread weight gain.

In closing I would like to extend to our alumni board and in particular its chairman, Andrew Moran '79, our heartfelt thanks for helping make the Mu a great place to hang your hat.

*Steven F. Negaard '88*  
Past President



**EPSILON**

University of California-Berkeley  
1902

No report received.

**OMICRON**

University of Illinois  
1910

Psi Upsilon enhances student life at the University of Illinois in many ways, two of which stick out in my mind as unique to the Omicron Chapter.

The first way is through our dinner guest program. Once every week the chapter invites a special guest to our dress-up dinner. Some of our guests during this past semester have been the Dean of the Business College, a member of the Illini Union Board, and a representative from McKinley Health Center's acquaintance rape program. These guests keep the chapter informed on the important issues and activities on campus, making it easier for us to get involved. It also allows our guests to get to know us better. I believe this form of communication builds a positive relationship with groups outside of the Greek system.

The second way the Omicron Chapter enhances student life at the University of Illinois is through our philanthropy. Every fall we sponsor a triathlon along with Chi Omega Sorority and Triathletes in Training. Besides providing support for local charities, this race provides athletes, both student and non-student alike, an opportunity to participate in an athletic event rarely seen in Central Illinois. Also, like the dinner guest program, the triathlon improves our relations with other campus groups that work together with us to put on the race. My congratulations go out to the race coordinator, Doug Truskowski '88, on the tremendous success of the 1987 triathlon.

Finally, I would like to invite all brothers and alumni to visit the Omicron Chapter. We have exciting plans for the rest of the semester, and we would love for you to share them with us.

*David T. McNeela '88*  
President

**THETA THETA**

University of Washington  
1916

Greetings from the Theta Theta! Fall quarter of 1987 was both a challenging and memorable one for the chapter as a whole. The recent initiation of 20 new members into the brotherhood makes us stronger than ever. The number of live-ins now stands at 88, making the Theta Theta the fifth largest on a campus of 31

fraternities. Many thanks to those who helped with a successful rush, especially the fine jobs done by Craig Davidson '88 and his very able assistants, Dan Brady '89 and Brett Aggen '89.

We also enjoyed continued success in athletics, fielding three football teams, five volleyball teams and one basketball team. Special recognition must go to the Cascade League football team, which enjoyed immense success throughout the season, maintaining a top-ten ranking the entire season. Large contributions were made by Bill Borkowski '88, Matt McPherson '89, and Brian Marlow '91. Additionally, the Theta Theta's continued success in intramural sports activities makes it a frontrunner for the coveted 1988 Sportsmanship Award, which is based on points awarded for participation in intramural sports competition.

Socially speaking we enjoyed an eventful quarter. Our annual stockshow cocktail party was a great success. This year's fall formal was held at the elegant Edgewater Inn on the Seattle waterfront. Great fun was had by all as dancing and merriment lasted well into the night. Thanks to Alan Minney '90, a plethora of new and exciting activities are planned for the remainder of the year.

Congratulations are also due our new officers, especially Tom Allan '89 (president), Alan Minney '90 (vice president-social), Eric Michelson '90 (fraternity education), and Steve Domingues '89 (vice president-rush).

A recent interest in student government and on-campus politics has emerged within the Theta Theta. Brother Brian Marlow '91 is the new JIFC treasurer, Brother Lou Nemeth '90 has been named IFC vice president-public relations, and our perennial campus politician, Mike Egan '89, a current member of the ASULW board of control, has announced plans to pursue the office of vice president-governance. Good luck to Mike.

All is well in Seattle. 1988 is off to a great start, as continued dedication and enthusiasm surround the Theta Theta.

*Mikael O. Strandell '89*  
Chairman, Chapter Services

**NU**

University of Toronto  
1920

For the first time since reactivation, tragedy has touched the Nu. While participating in a work project, the president of our chapter, Brother Paul Lordly, fell from the third story of the chapter house, resulting in severe damage to his spinal cord. Initial opinions from doctors regarding his recovery were not optimistic, however, his progress has been steady

and encouraging. At present, Paul is confined to a wheelchair yet is able to walk for short periods of time using leg braces. A donation fund has been set up in Brother Lordly's behalf by the Nu Chapter. Contributions may be sent to the chapter house payable to Psi Upsilon with a notation that the cheque is for Brother Lordly.

On the more positive side, the chapter held a successful fall rushing period, enabling the Nu to initiate five new brothers in December. Congratulations to Brothers Patrick Dixon '92, Ramon Grajo '91, Michael Lanois '91, Andre Thomas '91, and Levan Turner '92 on entering the bonds of Psi Upsilon.

The Nu's annual Christmas party for underprivileged children was held December 15 at a local elementary school. A good time was enjoyed by all. The chapter also held its annual semi-formal Christmas party and alumni reception at the chapter house December 11.

The Nu is directing as much of its attention and financial resources as possible to renovating and upgrading the chapter house. Painting, restoring original woodwork, and the purchase of new appliances have all taken place last term.

On a final note, the Nu Chapter enjoyed entertaining brothers from the Epsilon Iota, Upsilon, Chi, and Delta Chapters during the fall term. Unfortunately, the Nu was unable to attend the annual convention. The Nu Chapter, with 17 members, is now at its strongest since reactivation, and we all look forward to increased success in the following term.

**EPSILON PHI**

McGill University  
1928

Initiation 1987 kept the growing spirit alive. 1988 has begun well, and we all look forward to a continuation of the prosperity, especially in light of the very solid executive council that we have.

The E Phi's are still celebrating McGill University's 47-11 destruction of the University of British Columbia in the Canadian Collegiate National Football title. We sent fifteen brothers to Toronto to cheer on the lads. This winter several brothers attended the Mardi Gras Rugby Tournament at Tulane. This was an excellent competition for the McGill side, due to the international field of teams.

An ABC made-for-television movie starring Marie Wittingham was filmed in part at our house at 510 Pine Avenue in Montreal earlier this year. The movie will air sometime this spring.

Several brothers are planning charity events for this semester as there are many worthy organizations to choose from here



in Montreal. The 60th anniversary of the Epsilon Phi on March 17 was cause for a wonderful St. Patrick's Day celebration.

The brothers of the Epsilon Phi extend a welcome to all chapters to visit and enjoy the unique style of Montreal.

*Peter A. Lorusso '89*  
President

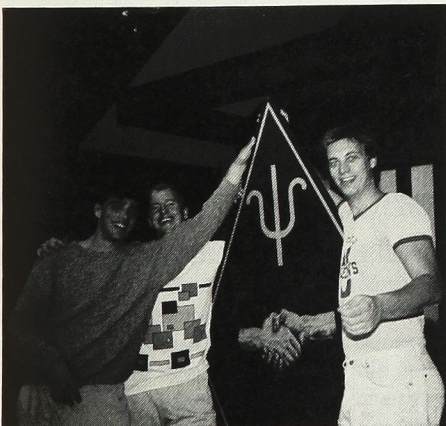
## ZETA ZETA

University of British Columbia  
1935

It is turning into quite a good year for the brothers of the Zeta Zeta Chapter here at the University of British Columbia. Our chapter is currently in a period of growth and strength, both in numbers and in spirit. Our house is in good condition, and our confidence is high. As well, we have been making great efforts towards increasing our presence on campus, especially within the Greek community.

Our IFC is currently in the process of creating an official constitution for the Greek community here. We wish to ensure that it will be a good and fair constitution both for the UBC Greek community and for Psi Upsilon. This will be the framework upon which the future Greek communities of UBC will be built. Thus we are persistently voicing the wishes of the chapter at all constitutional meetings. Our aim is for the constitution to hold up against close scrutiny and to become an honored legacy for future UBC Greeks.

Once again this year the brothers of the Zeta Zeta held our annual charity football tournament in the beginning of March. This year it was bigger than ever. Once again we raised funds for the Rick Hansen Man in Motion Fund for spinal cord research.



Gino Pugliese, Gareth Davies, and Doug Ethell prepare to mount their new Psi Upsilon badge to the outside of their house.

We recently initiated our pledge class, and we could not be more pleased with them. As well, we have a small but promising spring pledge class. To further increase our size we are planning to hold another rush at the end of this academic year. This upcoming rush will be specifically aimed at those young men who will be entering their first year at the university in the fall of 1988. If successful, we will be much better prepared to compete with the larger fraternities in the fall rush.

Several of the new initiates are prominent in UBC varsity athletics: Brent Henderson is an up and coming star on the UBC basketball team and John Schupp and Greg Willisroft are both starters on the UBC volleyball team. We try to get large numbers of brothers out to the games to cheer on those brothers who are playing. In one recent outing we were all very enthusiastic as Brother Henderson helped UBC defeat the number one ranked team in Canadian Intercollegiate Basketball. Earlier in the year we watched as Brothers Schupp, Willisroft, and Wachowski played crucial roles in the UBC volleyball team's victory over UCLA, last year's NCAA champions.

Our parties have been going quite well as usual. This year we held the all-Greek party after serenade, and it was a resounding success. Our house was rumored to be very impressive to other Greeks; this was substantiated when we were approached by the phrateries (a university sanctioned pseudo-sorority with about 300 active members) to throw their New Year's Eve party at our house. We agreed, and it was a very good party indeed. We have a couple planned for this semester and hope that they will also be successful.

We had thought of making a roadtrip to the Olympics in Calgary, but it is farther than it appears on the map, not to mention the great expense. However during the Olympics we had our own little ski party at Whistler, a nearby ski resort.

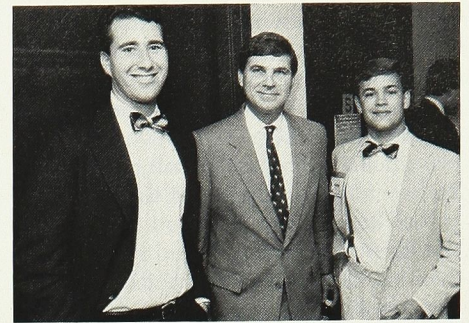
In closing, I would just like to reiterate that the Zeta Zeta Chapter is having one of its best and most productive years in a long time, a trend that we hope will continue.

*Douglas Ethel '92*  
President

## EPSILON NU

Michigan State University  
1943

Winter term 1988 has seen a flourishing of individual as well as house accomplishments in and around Michigan State



Members of the Epsilon Nu Chapter enjoyed last year's convention in New York City: Eric Rothstein '88, Rich Carlson '69, and Kenan Bakirci '87.

University. We are proud to announce senior Dave Robb's recent election to the position of Executive Director of ASMSU (Associated Students of Michigan State University) and David Koh's positions on the Steering and Academic Committees of the Student Council. Brothers Robb, Jones, Kalajian, and MacDonald all are members of the Order of Omega, an organization which offers free tutoring to students in the MSU Greek system.

The chapter on the whole has been very active in intramural sports, blood drives, and organizations such as the campus Republicans, the AIESCC (an international business organization), crew, and the MSU sailing club. The chapter enjoyed another annual Easter egg hunt with the children of the Beekman Home for mentally retarded children, and is gearing up now for the upcoming Greek Week '88 and Special Olympics.

Many thanks to the actives and alumni of the Epsilon Nu and Phi Chapters for another fantastic Founders' Day.

*Patrick D. New '90*  
Secretary

## EPSILON OMEGA

Northwestern University  
1949

The members of the Epsilon Omega Chapter are serving the campus in a myriad of ways.

First of all, we pride ourselves on our diversity, and this quality shines through in the variety of activities we are involved in.

Eleven of our members are on the NU soccer team, with Brothers Wayne Hill '88 and Steve Egresits '89 serving as co-captains. The soccer team finished with a record of 10-7-12, providing entertainment for fans and making the campus proud.

Chuck Frizelle '89, Jim Conzemius '90, and Joe Perona '91 are members of the NU baseball team. Derek Sammon '90 is



a dedicated crew member. Cory Olcott '91 represents the chapter on the water polo team. Craig Wisner '88, a member of the swim team, is the finest breast stroker in the Big Ten. Steve Uhrir '91 plays tailback on the football team. Mike Parker '90 is a member of the club basketball team. Mike Prescott '88 pulls in the jib on the sailing team. And I must mention that our intramural football team and 165 lbs. and under teams won both their respective campus championships.

Five Psi U's are ROTC members who not only serve the campus, but our country, as well. They serve on a campus escort service and as ushers for the Wildcat home basketball games.

Our chapter dominates the annual Special Olympics every spring. Wayne Hill '88 is the general chairman, Greg Graeber '89 is the sports coordinator, Tom Kelly '88 is the organizational coordinator, Gordon Scott '89 serves as accountant, Jeff Fisher '88 heads the registration, John DeSmet '88 is in charge of awards, Ben Maxwell '90 leads the softball throw, Derek Samman '90 runs the long jump, and Josh Levinson '91 acts as an official. Many other brothers participate as huggers when the competitors cross the finish line. The experience of helping others is unforgettable.

Greg Graeber '89 serves on the finance committee of A&O, an organization that provides campus activities for all students to enjoy. Bob Handelman '89 has founded an advertising and modeling organization dubbed "Look Look." Bob has organized and created several fashion shows a year. He also put together a campus photo exhibit displayed on the walls of Patten Gym.

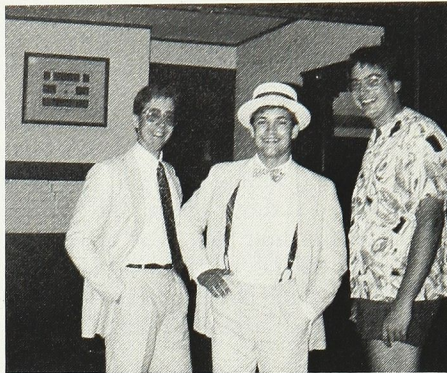
Mark Richer '89 has designed and marketed a stuffed "Willie the Wildcat." Richer Enterprises is thriving. Josh Levinson '89 directs a cable talk show called "Now We're Talkin." Brother Ben Maxwell operates one of the cameras as well.

Jim Ginther '88 and Jeff Fisher '88 serve on Mortar Board, an academic honor society. Ginther also serves with Wayne Hill '88 on DERU, an activities honor society. Wayne Hill and John DeSmet '88 spend their Saturdays playing with young children, a part of the Volunteers for Youth program.

Mike Fegan '88 heads the fund-raiser dance marathon, with Tom Kelly '88 actually doing the dancing. Peter Hoefpner '88 and Jim Ferolo '89 are student directors at the Norris Aquatics Center.

It is evident that members of Psi U thrive on serving the campus. Psi U needs Northwestern, but Northwestern needs Psi U, as well.

*Perry M. Rein '88*  
Assistant Editor



Field Directors Pete Enko, Phi Beta '87, and Kenan Bakirci, Epsilon Nu '87, enjoyed their visit last summer with the Gamma Tau Chapter and its president, Fred Corsiglia '89.

### **GAMMA TAU** Georgia Institute of Technology 1970

As usual, recent activity at the Gamma Tau has centered on membership recruitment. This past fall we garnered four new pledges, but our winter rush was hindered by a snow storm.

Alumni activity is on the upswing. A new effort for raising funds for a new house is being coordinated by Alumni President John Statham with help from Alumni Treasurer Charles Hall. All alumni are encouraged to respond when asked for information or money. For the first time in many years, we are planning a charitable fund raiser. Brother Doug Grunwald '88 is organizing a road rally race for this May. Elsewhere on campus, three brothers are instructors in caving and canoeing.

*Frederic A. Corsiglia '89*  
President

### **CHI DELTA** Duke University 1973

A strong academic record, fine athletic teams, and many opportunities for extracurricular involvement are only a few of the reasons for the vitality of life at Duke University. Student involvement and support for many organizations and special-interest groups are the keys to their relative success. The goal-oriented attitude of Duke students underlies the hard work and enthusiasm behind successful programs. While individual contributions to the University community are great in number, the student influences are only enhanced by the activities of large campus-wide organizations. One of the most successful of these groups is the Interfraternity Council and its member fraternities. The contributions of the fra-

ternities in general extend from providing social activities to community service projects.

As a group the Chi Delta does its share to enhance life at Duke University. Outside of the social atmosphere we provide a strong service commitment to the Durham community, and our influence is less than ordinary. On the individual level, our brothers are varsity athletes, ROTC cadets, trombonists on the basketball PEP band, and officers in student government, as well as members of other special interest groups. These contributions do not seem out of the ordinary. Most college students have responsibilities beyond their academic obligations, as do many fraternity men. Yet the efforts of the Chi Delta's brothers in the University community are markedly unique.

The outstanding qualities of our efforts do not lie in a different manner of doing things but in our general attitudes toward our various responsibilities and a deep regard for the larger group which we as individuals represent. This attitude is not a quality each of us exhibits equally, but a common denominator does in fact exist in our brotherhood as a whole — that being a certain style characteristic of Psi Upsilon brothers. Of course, this is difficult to identify as each of our chapters is unique in its own character and its place in the International Fraternity. I do, however, believe that this attitude can be hinted at by one of the lessons I learned as a pledge — that at all times as a Psi Upsilon pledge or brother my actions would be a direct reflection of the chapter and therefore of the Fraternity as a whole. I believe we were referred to as "ambassadors" of the Fraternity; but no matter what the term, it characterizes the unique qualities which our brothers add to the University in their own particular ways.

The Chi Delta would like to extend its best wishes for a great year to each and every chapter.

*Derek A. Rodriguez '89*  
President

### **ZETA TAU** Tufts University 1981

Fall 1987 was an extremely productive semester for the Zeta Tau Chapter. A concerted effort was made by all brothers to maintain the favorable opinion of Psi U in the community and to continue to play a part in enhancing student life on campus.

This year Tufts Homecoming coincidentally fell on Halloween, and our chapter set out to raise money for UNICEF. By combing the packed stands and park-



ing lots at the football game, we were able to amass close to \$300.00 for this worthy cause.

Also, in an effort to foster community relations, many of the brothers have just recently joined the Big Brother-Little Brother program located in Somerville and Medford. Each week a brother meets with a different child and takes him/her out for an afternoon of fun. Such activities include bowling, movies, sports events, theater productions, etc.

Finally, as a part of our annual effort to help out the Boston Children's Hospital drive, the Zeta Tau brothers spent two days setting up Christmas trees and beautiful decorations. These trees were later auctioned off and the proceeds then donated to the Children's Hospital Fund. All in all, this year's work was especially rewarding in that the drive raised more money than ever before.

*James F. Tierney '89*  
President

## EPSILON IOTA

Rensselaer Polytechnic Institute  
1982

In regard to the issue which I was asked to address in this report, the Epsilon Iota has made strides toward enhancing student life and making an impact on the RPI campus this past semester. We have always felt that we offer a full social life both to our brothers and to the campus as a whole, and we were again reasonably successful in that area, especially in rising to the challenge of the school's newly instituted three-week dry rush period. However, our chapter's contribution to student life went beyond our social events this past semester. We are particularly proud of our involvement in Greek Week, especially since our involvement in interfraternity activities has been notably lacking in past years. We ended up placing fifth out of thirty-two fraternities and sororities in terms of participation, success of events, and general promotion of Greek ideals. In addition, Psi U sponsored a number of campus-wide competitions, including our trivia contest, which ranked among the most popular events of the week.

We have also increased efforts toward reviving our charity program, which had fallen off somewhat over the past couple of years. We will most likely be sponsoring a blood drive this spring, and there is a distinct possibility we will be organizing a house charity event. We feel that a strong charity program can improve not only the image of our fraternity, but can also improve student life by favorably influencing the surrounding community's

attitudes toward the school and its students.

Last but not least, Psi U has enhanced student life at RPI through the activities of individual members. For example, one of our brothers is a resident assistant in one of the freshman dorms and has the opportunity to assist many students in this way. Other brothers have been involved in such activities as the student-to-student tutoring program, which offers help to students having academic difficulties.

In other news, we are pleased to announce the initiation of two of last year's spring pledges, Scott Tucker '90 and Jim Lynch '90. This year's fall rush was not as successful as we would have liked, but we are looking toward a strong spring rush to compensate. Good luck to all for a successful rest of the year!

*Timothy F. Wills '88*  
President

## PHI BETA

College of William and Mary  
1984

Greetings from the Phi Beta! All is great at the College of William and Mary. This has been a very successful semester for our chapter.

Rush began at the end of September with an open house. Through a variety of subsequent events, we pledged seven men. We also already have two freshmen who will join our spring class.

As members of the Executive Council can attest, it was also a good semester socially. We hosted the Executive Council for a reception on October 2 and for their meeting in Williamsburg the following day. Our second band party of the semester took place the night after the meeting and was most successful.

For the second year we entered a float in the homecoming parade. Our 12-foot Elvis traveled down Duke of Gloucester Street to win third place in the float competition. We had an excellent number of alumni return for this event. We invite all chapters to visit sunny Virginia.

*David J. Weaving '88*  
Past President

## KAPPA PHI PROVISIONAL

Penn State University

The Kappa Phi Provisional Chapter of Psi Upsilon is enhancing student life at Penn State in many ways, three of which come to mind almost immediately. First and foremost, the Kappa Phi provides a prospective member with an excellent opportunity to build and expand his own personal leadership skills. Because we are

in competition at Penn State with 52 other fraternities, it stands to reason that our brotherhood faces many challenges on a day-to-day basis. By becoming involved in this challenge, a brother affords himself the opportunity to enhance his own leadership skills by taking an immediate hands-on role in the operation of a chapter in a highly competitive environment. This type of experience builds confidence, character, and pride in an individual.

Secondly, the Kappa Phi Provisional Chapter currently offers Penn State undergraduates an excellent opportunity for academic success. The chapter currently ranks 12th out of 53 fraternities at Penn State academically and boasts a grade point average above that of the university

*(Continued on page 20)*

## Official Psi Upsilon Insignia



- 104 Regulation Badge including engraving, Balclad
- 500 Regular Alumni Key single faced, Balclad
- 501 Regular Alumni Key double faced, no engraving, Balclad
- 701 Pledge Button, Balclad
- 5070 Sweetheart Badge, Balclad
- 800 Sterling Silver Ring
- 801 Sterling Ring with 10K top
- 802 10K Gold Ring

\*Balclad® is a gold electroplate.

### PROCEDURE FOR ORDERING

Jewelry orders should be placed directly with Balfour on official order forms. These forms are available through the Fraternity office. We also would be happy to send you a catalogue of Balfour's fine selection of other jewelry items, plaques and awards, chapter accessories, etc.

Please complete and return to:

Psi Upsilon Fraternity  
Two Station Square  
Paoli, PA 19301

- Please send me an official order form.
- Please send me the Balfour catalogue.

Name \_\_\_\_\_

Address \_\_\_\_\_

Chapter and Class \_\_\_\_\_



## NECROLOGY

### THETA

Robert G. Field '44 — Silver Bay, NY — January 1988  
 Wesley W. Schmitt '31 — Traverse City, MI  
 John E. Tormey '69 — Columbus, OH — October 3, 1987

### DELTA

Henry J. Kelley '48 — Blacksburg, VA — February 1988  
 Robert G. Stewart '17 — Brooklandville, MD — February 2, 1988  
 Thomas C. Wakefield '39 — Tustin, CA — March 1, 1988

### BETA

Howard D. Hadden '21 — Englewood, FL — October 12, 1987

### SIGMA

Walton C. Forstall '22 — Fonda, NY — October 20, 1987

### ZETA

Conrad S. Keyes, III '21 — Arlington, VA — January 4, 1988

### KAPPA

Philip C. Ahern '32 — Pittsfield, MA — November 13, 1987  
 Laurence C. Allen '23 — Sanford, ME — June 10, 1987  
 John A. Clarke '33 — Fletcher, NC — January 3, 1988  
 John D. Lincoln '29 — Phoenix, AZ — January 1988  
 Sprague Mitchell '37 — Greensboro, VT — July 1987  
 Donald D. Sloan '32 — New London, NH — November 6, 1987

### PSI

Philip L. Schmidt '61

### XI

Joseph Beech, Jr. '37 — Cincinnati, OH — January 19, 1988  
 William H. Leckie '41 — Stuart, FL  
 Harold P. Tasker '22 — Little Silver, NJ — December 28, 1987

### UPSILON

Lucius L. Powell '29 — Huntington, WV

### IOTA

John B. Templeton '30 — Oak Brook, IL — December 6, 1987

### PHI

Edwin L. Larson '49 — Mayfield Heights, OH — January 25, 1988

### OMEGA

Harold W. Lewis '23 — River Forest, IL — August 3, 1987

### BETA BETA

Bayard Walker '38 — New York, NY

### TAU

J. Gilpin Allen, Jr. '51 — Malvern, PA  
 John B. Hulburd '33 — Upper Black Eddy, PA — July 19, 1987  
 Lowell S. Thomas '24 — Philadelphia, PA

### MU

Russell D. Thomas '18 — Minneapolis, MN — December 8, 1987

### RHO

Maurice H. McCaffrey '23 — Dunedin, FL  
 Robert M. Shehan '50 — Kenilworth, IL — December 7, 1987  
 John J. Woolverton, Jr. '27 — Niles, MI

### OMICRON

Stephen A. Wilson '20 — Chicago, IL — December 30, 1987

### DELTA DELTA

Donald T. Jones '39 — Bradenton, FL  
 L. Dean Pearson '14 — Cornish, NH — November 10, 1987  
 W. Howard Prescott, Jr. '22 — Crystal River, FL — May 9, 1987

### THETA THETA

Anthony Callison '54 — Seattle, WA — January 25, 1988  
 Seymour A. Davison '33 — La Mesa, CA

### NU

James E. Ronayne '42 — Rochester, MI — July 15, 1987

### EPSILON PHI

George E. Davis '37  
 Stuart M. Duncan '23 — Baie D'Urfe, PQ  
 Hugh K. Ingeroll '26 — Ottawa, ON  
 G. E. Thompson '13

### ZETA ZETA

Nelson E. Odlum '36 — November 8, 1986  
 David E. Penman '89 — July 1986

## The Chapters Report

*(Continued from page 20)*

all-men's average. Involvement in this type of environment offers a member of our brotherhood the opportunity to enhance his own academic experience at Penn State through interaction in the strong academic environment that the Kappa Phi offers.

Finally the Kappa Phi offers Penn State students an excellent social environment. We have an extensive calendar of social events every semester, we participate in intramural athletics, we are completely involved in all Greek activities at Penn State, and we have extensive interaction with the surrounding State College community. The diversity of backgrounds and interests characterized by the membership of our chapter, combined with the broad spectrum of social opportunities we offer, combine to make the Kappa Phi Provisional Chapter of Psi Upsilon an excellent social environment for any Penn State student.

*John N. Jankowich '88*  
*Past President*

## Who Trod These Halls

*(Continued from page 4)*

ture a framed set of Doumier cartoons that were donated by an alumnus on the occasion of the dedication of the new house.

The main lounge is just beyond the stairhall. The east wall of this large room is graced with an old Italian Bolection marble fireplace. The walls, painted a rich "garnet" color, are adorned with a rare Audubon print of an owl and four 18th century prints entitled "The Rake's Progress Through the University." The room features a magnificent Chippendale breakfront, which contains some valuable old volumes and other treasures. Through to the south is another lounge originally used as a card room.

Beyond the card room to the east is a pair of rooms and a bath. Originally featuring Chippendale furniture and used for visiting alumni, they now serve as a suite for the chapter president.

The top two floors are composed entirely of sleeping rooms and baths. The basement, in addition to containing the mechanical systems, a fireproof vault (which was originally built to house the fraternity archives), and storage rooms, also boasts a billiard room, a bar room, and a lodge room. The latter is adorned with a magnificent stained glass window from the former house.

Through the incredible generosity of Walter C. Baker, Theta '15, and his wife, the Theta Chapter house was completely furnished, mostly in lovely Chippendale pieces. The Theta is fortunate to have retained a few of these original furnishings.

As with any fraternity house, the physical characteristics are but a small part of the cherished traditions of the many young men who have passed through it. The Theta Chapter house is undoubtedly no exception.



## The Psi Upsilon Foundation, Inc.

### Officers

*President* — Robert L. Kaiser, Zeta '39, Blunt Alumni Center, Dartmouth College, Hanover, NH 03755  
*Vice President* — R. Timothy Leedy, Phi '57, 18 Carriage Lane, New Canaan, CT 06840  
*Secretary* — David A. B. Brown, Epsilon Phi '66, 31 Everett Ave., Winchester, MA 01890  
*Treasurer* — Andrew M. Kerstein, Delta '76, 163 Grant Ave., New Providence, NJ 07974

### Executive Director

Henry B. Poor, Gamma '39, 614 Andover Rd., Newtown Square, PA 19073

### Directors

Neal A. Brown, Psi '58, Greenfield Eisenberg Stein & Senior, 99 Park Ave., New York, NY 10016  
A. Durston Dodge, Theta '44, 486 High St., Victor, NY 14564  
Robert B. Evans, Phi '30, 200 Renaissance Center, Suite 3048, Detroit, MI 48243  
Edward S. Fries, Eta '45, 74 Trinity Pl., New York, NY 10006  
A. Price Gehrke, Pi-Tau '43, 55 Heritage Dr., River Hills Plantation, Clover, SC 29710  
James E. Heerin, Jr., Tau '58, 3011 Sycamore Rd., Huntingdon Valley, PA 19006  
Jonathan T. Howe, Epsilon Omega '63, 20 N. Wacker Dr., Chicago, IL 60606  
Travis B. Jacobs, Lambda '62, History Department, Middlebury College, Middlebury, VT 05753  
H. John Lageschulte, Epsilon Omega '59, 49 Dundee Lane, Lake Barrington, IL 60010  
William R. Robie, Epsilon Omega '66, 5201 Leesburg Pike, Suite 1501, Falls Church, VA 22041  
George T. Sewall, Kappa '32, 1212 Fifth Ave., New York, NY 10029  
Donald S. Smith, Jr., Xi '39, 8 LeMay St., West Hartford, CT 06107  
Stanton F. Weissenborn, Chi '49, 21 Holton Lane, Essex Fells, NJ 07021  
Russell E. Whitmyer, Gamma '36, 150 East 77th St., New York, NY 10021

### Honorary Life Members

Jerome W. Brush, Jr., Delta Delta '39, 200 East 66th St., New York, NY 10021  
Gardner A. Callanen, Psi '29, 800 Charlotte St., Utica, NY 13501  
Robert H. Craft, Tau '29, New York Bank for Savings, 1230 Avenue of the Americas, New York, NY 10020  
Robert A. McDowell, Pi '40, 8 Bayside Drive, Plandome, NY 11030  
Norman J. Schoonover, Theta Theta '46, Box 7591, Boise, ID 83707

### Honorary Directors

C. Everett Bacon, Xi '13  
Carlyle F. Barnes, Xi '48  
Edward M. Benson, Jr., Epsilon '42  
G. Cameron Brown, Omicron '37  
John F. Bush, Jr., Upsilon '22  
Llewellyn L. Callaway, Jr., Zeta '30  
Charles E. Clapp, II, Delta Delta '45  
Charles M. Fish, Omicron '28  
Joseph B. Hall, Epsilon Omega '52  
James R. Kennedy, Rho '35  
Jackson F. Moore, Omega '23  
John R. Parker, Omicron '28  
Walter R. Perschke, Omega '60  
Robert W. Purcell, Chi '32  
G. Foster Sanford, Jr., Tau '28  
Walter W. Vail, Zeta '58  
Robert R. Waltz, Theta Theta '35  
Charles A. Werner, Omega '55  
Charles E. Woodman, Epsilon Omega '53

The Psi Upsilon Foundation, Inc. is a public, educational foundation chartered in 1958 in the State of Rhode Island and Providence Plantations. Contributions are fully tax deductible (tax identification number 05-6013135). For more information about gifts and bequests, please contact the Executive Director at:

Two Station Square  
Paoli, Pennsylvania 19301  
(215) 640-4287

## REPP TIE

Black with garnet and gold stripes.

All Silk



\$20.00

Also Available in a poly/silk blend:  
Gold clasped hands on navy background  
or  
Gold clasped hands with gold and navy stripes  
on garnet background  
\$12.00

Prices include shipping charges.  
Place order by writing to (please  
include payment):

**Psi Upsilon Fraternity**  
Two Station Square  
Paoli, PA 19301-1389

## SESQUICENTENNIAL PLATE

Full-color, bone china



Prices include shipping charges. Place order by writing to (please  
include payment):

**Psi Upsilon Fraternity**  
Two Station Square  
Paoli, PA 19301-1389



## Active Chapters of Psi Upsilon

<b>Theta</b> — Union College Psi Upsilon House, Union College, Schenectady, NY 12308, (518) 386-4305	1833
<b>Delta</b> — New York University 3-5 Washington Place, New York, NY 10003, (212) 777-6274	1837
<b>Sigma</b> — Brown University Box 1158, Brown University, Providence, RI 02912, (401) 863-5536	1840
<b>Gamma</b> — Amherst College 30 Railroad St., Amherst, MA 01002, (413) 256-0838	1841
<b>Zeta</b> — Dartmouth College 7 W. Wheelock St., Hanover, NH 03755, (603) 643-9824	1842
<b>Lambda</b> — Columbia University 542 W. 114th St., New York, NY 10025, (212) 749-6984	1842
<b>Kappa</b> — Bowdoin College 250 Maine St., Brunswick, ME 04011, (207) 725-3938	1843
<b>Psi</b> — Hamilton College 96 College Hill Road, Clinton, NY 13323, (315) 853-8025	1843
<b>Xi</b> — Wesleyan University 242 High St., Middletown, CT 06457, (203) 346-9749	1843
<b>Upsilon</b> — University of Rochester P.O. Box 29057, River Campus Station, Rochester, NY 14627, (716) 274-4240	1858
<b>Iota</b> — Kenyon College North Leonard Hall, Gambier, OH 43022, (614) 427-5469, Ext. 5470	1860
<b>Phi</b> — University of Michigan 1000 Hill St., Ann Arbor, MI 48104, (313) 761-1055	1865
<b>Omega</b> — University of Chicago 5639 South University Avenue, Chicago, IL 60637, (312) 288-9870	1869
<b>Pi</b> — Syracuse University 101 College Place, Syracuse, NY 13210, (315) 424-9575	1875
<b>Chi</b> — Cornell University Two Forest Park Lane, Ithaca, NY 14850, (607) 272-9772	1876
<b>Beta Beta</b> — Trinity College 81 Vernon Street, Hartford, CT 06106, (203) 728-9893	1880
<b>Eta</b> — Lehigh University 920 Brodhead Avenue, Bethlehem, PA 18015, (215) 691-9702	1884
<b>Tau</b> — University of Pennsylvania 300 South 36th Street, Philadelphia, PA 19104, (215) 222-9338	1891
<b>Mu</b> — University of Minnesota 1617 University Avenue, S.E., Minneapolis, MN 55414, (612) 378-1022	1891
<b>Epsilon</b> — University of California at Berkeley 2516 Warring St., Berkeley, CA 94704, (415) 548-9330	1902
<b>Omicron</b> — University of Illinois 313 East Armory Avenue, Champaign, IL 61820, (217) 384-9766	1910
<b>Theta Theta</b> — University of Washington 1818 N.E. 47th Street, Seattle, WA 98105, (206) 526-7227	1916
<b>Nu</b> — University of Toronto 157 Spadina Road, Toronto, ON, Canada M5R 2T9, (416) 963-9398	1920
<b>Epsilon Phi</b> — McGill University 510 Pine Avenue, West, Montreal, PQ, Canada H2W 1S6, (514) 848-0953	1928
<b>Zeta Zeta</b> — University of British Columbia 2260 Wesbrook Mall, Vancouver, BC, Canada V6T 1W6, (604) 224-9431	1935
<b>Epsilon Nu</b> — Michigan State University 810 West Grand River Avenue, East Lansing, MI 48823, (517) 351-4687	1943
<b>Epsilon Omega</b> — Northwestern University 620 Lincoln Street, Evanston, IL 60201, (312) 491-3158	1949
<b>Gamma Tau</b> — Georgia Institute of Technology 334 Tenth Street, N.W., Atlanta, GA 30318, (404) 892-6398	1970
<b>Chi Delta</b> — Duke University P.O. Box 4727, Duke Station, Durham, NC 27706, (919) 684-4273	1973
<b>Zeta Tau</b> — Tufts University 165 College Avenue, Somerville, MA 02144, Tel. (617) 625-0926	1981
<b>Epsilon Iota</b> — Rensselaer Polytechnic Institute 2140 Burdett Avenue, Troy, NY 12180, (518) 274-8408	1982
<b>Phi Beta</b> — College of William and Mary CS Box 1803, Williamsburg, VA 23186, (804) 253-4465	1984
<b>Kappa Phi Provisional</b> — Pennsylvania State University 240 East Prospect Avenue, State College, PA 16801, (814) 237-9923	