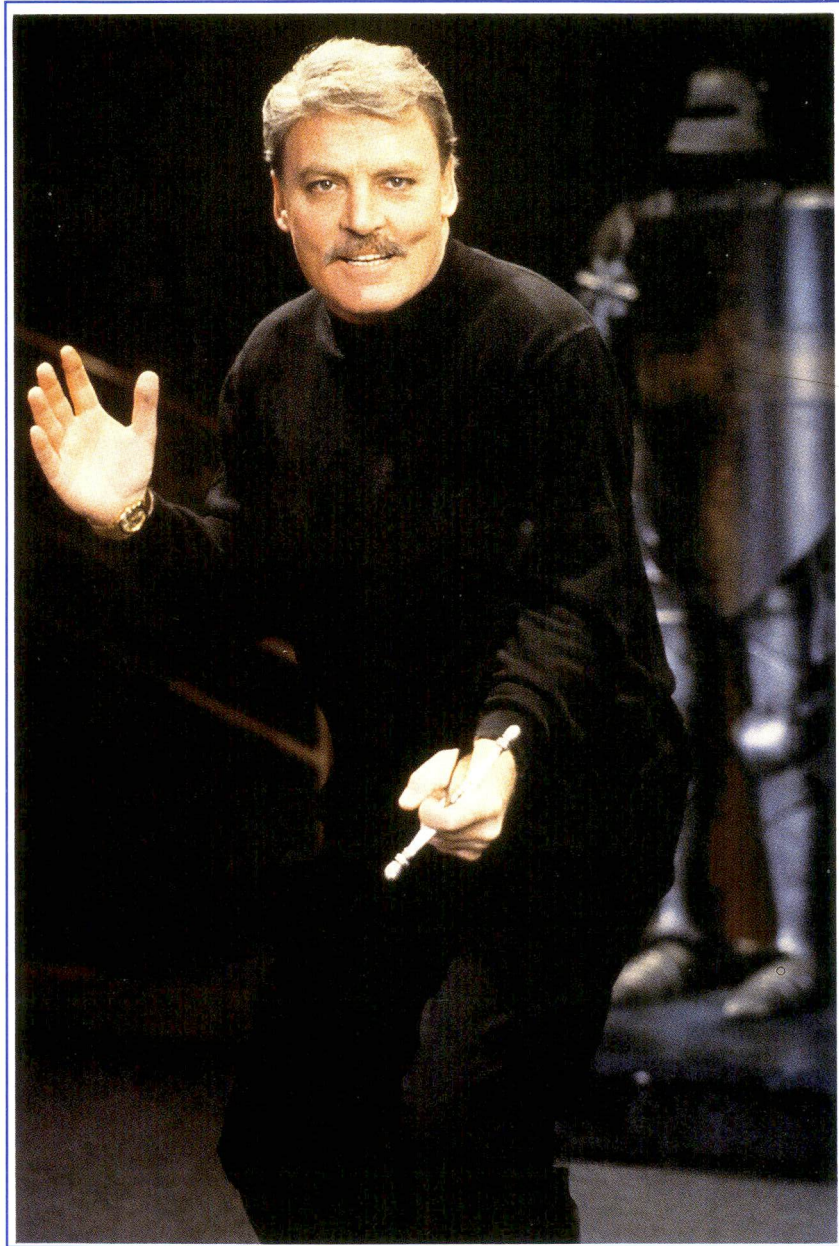


THE DIAMOND

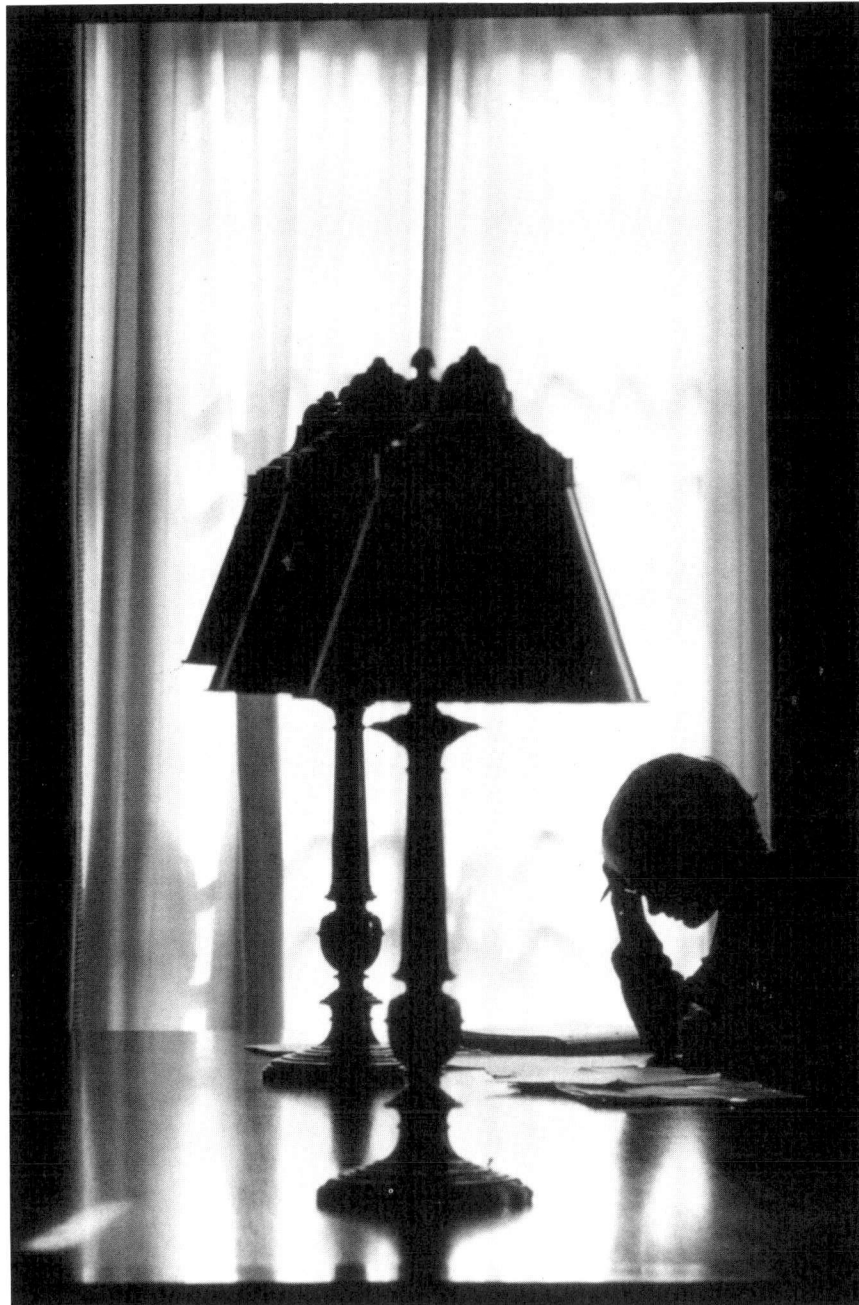
Spring/Summer 1994

OF PSI UPSILON



Walter Stacy Keach, Epsilon '63

An Investment in Leaders



Philip Dattilo

The long-term growth of The Psi Upsilon Foundation, Inc. can be greatly influenced through gifts from the wills of alumni. Cash, securities, and property all provide favorable tax benefits to the donor's estate.

Contact the Psi Upsilon Foundation today for ways you can give for leadership and scholarship. Contributions are tax-deductible to the maximum extent allowed by law.



PSI UPSILON
FOUNDATION

10293 NORTH MERIDIAN STREET, SUITE 275
INDIANAPOLIS, INDIANA 46290
(317) 571-1833
FAX (317) 844-5170
Tax Identification Number 05-6013135



PSI UPSILON FRATERNITY

Executive Council

Note: Years in parentheses indicate expiration of terms

Officers

President: Charles M. Hall, Nu Alpha '71 (1996)
900 Pharr Center, 550 Pharr Road N.E., Atlanta, GA 30305
Vice President: David A. B. Brown, Epsilon Phi '66 (1995)
31 Everett Avenue, Winchester, MA 01890
Secretary: Murray L. Eskenazi, Lambda '56 (1994)
8 Judith Court, East Rockaway, NY 11518
Treasurer: Thomas L. Phillips, Omicron '85 (1995)
220 Jackson Street, Trenton, NJ 08611

Executive Director

Mark A. Williams, Phi '76, 10293 N. Meridian Street, Suite 275,
Indianapolis, IN 46290

Alumni Term Members

Mark D. Bauer, Omega '83 (1994)
Apt. 209, 1816 New Hampshire Avenue N.W., Washington, DC 20009
Richard A. Horstmann, Pi '57 (1996)
c/o Highgate Manor, Room 211-A, Kellogg Road, Cortland, NY 13045
Ralph W. Muschett, Delta '52 (1995)
708 Malin Road, Newtown Square, PA 19073
Richard A. Rasmussen, Upsilon '72 (1995)
105 Drumlin View Drive, Mendon, NY 14506
Norman J. Schoonover, Theta Theta '46 (1996)
Box 7591, Boise, ID 83707
James A. Swanke, Jr., Rho '80 (1994)
173 Cedar Street, Wellesley, MA 02181
Forrest G. Weeks, Tau '52-Epsilon Iota (1996)
175-F Hague Boulevard, Glenmont, NY 12077

Honorary Life Members

Edward S. Fries, Eta '45,
74 Trinity Place, New York, NY 10006
Charles S. P. Hodge, Gamma '68,
1131 S. Forest Drive, Arlington, VA 22204
Robert L. Kaiser, Zeta '39,
37 Rayton Road, Hanover, NH 03755
John K. Menzies, Pi '41,
1211 Cumberland Avenue, Syracuse, NY 13210
Henry B. Poor, Gamma '39,
614 Andover Road, Newtown Square, PA 19073

Alumni Advisory Board

Vincent E. Darland, Epsilon Omega '85,
5808 N. Winthrop #1N, Chicago, IL 60660

International Office

10293 N. Meridian Street, Suite 275
Indianapolis, IN 46290
(317) 571-1833

FAX (317) 844-5170

E-mail 74544.1150@CompuServe.com

Executive Director: Mark A. Williams, Phi '76
Director of Alumni Services: Vernon Jones III, Phi Beta '89
Director of Administration: Mariann H. Williams
Director of Chapter Services: J. Brenden Owen, Phi Beta '93
Field Director: Ryan L. Hart, Beta Kappa '93

THE DIAMOND OF PSI UPSILON

Spring/Summer 1994

In This Issue

Walter Stacy Keach, Epsilon '63

King of the Stage



4

Batter Up!

At 107, George Abbott, Upsilon '11
is still batting for "Damn Yankees"

10

David A. B. Brown, Epsilon Phi '66

elected 19th President of the Executive Council

12

1994-1995 Foundation Scholarship Recipients

13

1994 Archon's Academy



16

The Past is Prologue

8

From an Owl

9

In Memoriam

18

From the Chapters

22

From the Staff

31

The DIAMOND of Psi Upsilon

VOLUME LXXX NUMBERS 1 & 2

©1994 Psi Upsilon Fraternity
An Educational Journal
First Published in 1878

Editor: Mark A. Williams
Assistant Editors:
Vernon Jones III, Ryan L. Hart

Executive, Publication and Editorial Offices: 10293 N. Meridian St., Suite 275, Indianapolis, Indiana 46290. Telephone 317-571-1833. Life subscription, \$20 (included in membership fee); by subscription \$1.00 per year; single copies 50 cents.

The DIAMOND of Psi Upsilon (ISSN 1073-4686) is published quarterly (Autumn, Winter, Spring and Summer) by Psi Upsilon Fraternity. Second-class postage paid at Indianapolis, Indiana and additional mailing offices. POSTMASTER: Send address changes to The DIAMOND of Psi Upsilon, 10293 N. Meridian St., Suite 275, Indianapolis, Indiana 46290.

The Official Publication of Psi Upsilon Fraternity.



Walter Stacy Keach, Epsilon '63 King of the Stage

by: Ryan L. Hart, Beta Kappa '93, Assistant Editor



While *Walter Stacy Keach, Jr.*, Epsilon '63 (California-Berkeley) is perhaps best known for his Golden Globe award-winning performance as TV's *Mike Hammer*, his heart is with the stage. He has been described as one of America's finest classical actors, compared in his youth to such theatrical legends as John Barrymore, Edwin Booth, and Alfred Lunt.

The Beginnings of an Actor

Born in Savannah, Georgia, and raised in Los Angeles, Keach grew up in a home where acting was the family business. Walter Stacy Keach, Sr. is a former radio actor and producer who presented such big time radio shows as *Tales of the Texas Rangers*. He ran the Pasadena Playhouse, making regular appearances with Victor Jory and Raymond Burr. More recently, Keach, Sr. has done television commercials for the Ford Motor Company. Brother Keach's mother, Mary, was also in the acting business, as was brother James. Keach and his brother have worked together, collaborating on movies such as *The Long Riders*.

During his years at the University of California-Berkeley, Keach used his talent to benefit the Epsilon Chapter of Psi Upsilon by directing the university Big-Game Ax Review, a variety show put on by the fraternities and sororities on campus. He began his acting at

Berkeley during the second semester of his freshman year and appeared in a total of nine university productions. Brother Keach was a regular producer, writer, and director in university plays and dramatic presentations.

After graduating with a degree in economics from Berkeley, Keach surrendered to the urge to act. His early career included summer stock in the East and leading roles with the elite Oregon Shakespeare Festival. Keach received his postgraduate training at the Yale Drama School and as a Fulbright scholar at the London Academy of Musical and Dramatic Art. After making his Broadway debut 25 years ago as Buffalo Bill in Arthur Kopit's *Indians*, and also starring as Lyndon B. Johnson in *Macbird*, he gained a reputation among theater insiders as one of America's premiere leading men.

The Audience Applauds

Keach is praised by critics and audiences alike for his performance in plays such as *The King and I*, *Kentucky Cycle*, *Solitary Confinement*, *Barnum*, *Sleuth*, *Idiot's Delight*, *Peer Gynt*, *Henry IV Parts I and II*, *Long Day's Journey*, *Hughie*, *Cyrano De Bergerac*, *Death-trap*, and *Hamlet*. These performances have been seen on Broadway, the Kennedy Center, Royal Theatre, and national tours. Keach has won several Drama Desk and Obie awards for his acting, and continues to amaze audiences with his remarkable talents.

Keach has played several different character types since his stage career began. It is because of his ability to switch from a king, to a psychotic killer, to a detective, that British film historian Leslie Halliwell classifies him as the "American general purpose actor." Keach may be general purpose but his talent is by no means mediocre. In fact, some of Keach's roles seem impossible for most actors, such as his portrayal of the King of Siam in the 1989 tour of *The King and I*.

The King and I

How can anyone possibly fill the shoes of the legendary Yul Brynner who played the King for 34 years? The day before the tour made its stop in Atlanta, Dan Hulbert, a reporter for an Atlanta newspaper painted a clear picture of the challenge Keach was facing as the King. "Mr. Keach is accustomed to the pressure of big parts," says Hulbert. "But the King of Siam is a unique case, for the role belongs to Mr. Brynner, who died in 1985 during his run in the musical's last Broadway revival. Mr. Brynner's hold on the King is so mystical that one can almost imagine bolts of lightning and hordes of hellish ghouls falling upon Mr. Keach's head the moment he opens his mouth to sing 'a Puzzlement,' in the same way that those calamities fell upon the Nazis who tampered with the holy relics of 'Raiders of the Lost Ark.'"

Lightning did not strike and Keach portrayed the King with stirring confidence. Keach said to be successful he had to make the audiences forget Brynner by making the part his own. "Does any actor believe he could play the King better than Yul? To me it's a great relief that he's so untouchable," Keach says. "I was

able to relax and find my own interpretation. I tried to give it more humor and more humanity. I think the problem with the Kings in the past has always been the lack of humanity, and in order to be successful I had to bring that out."

The Kentucky Cycle

Last fall, Keach returned to Broadway with the leading role in Robert Schenkkan's *The Kentucky Cycle*. This unusual play was first produced at Seattle's Intiman Theatre and later in Los Angeles, Washington D.C., and finally, on Broadway. With a production cost of \$2.5 million, *The Kentucky Cycle* is the most expensive "strict play" ever produced. In 1992, before reaching Broadway, the play won the Pulitzer Prize for drama, the first time that award had gone to a play that had not yet appeared in New York.

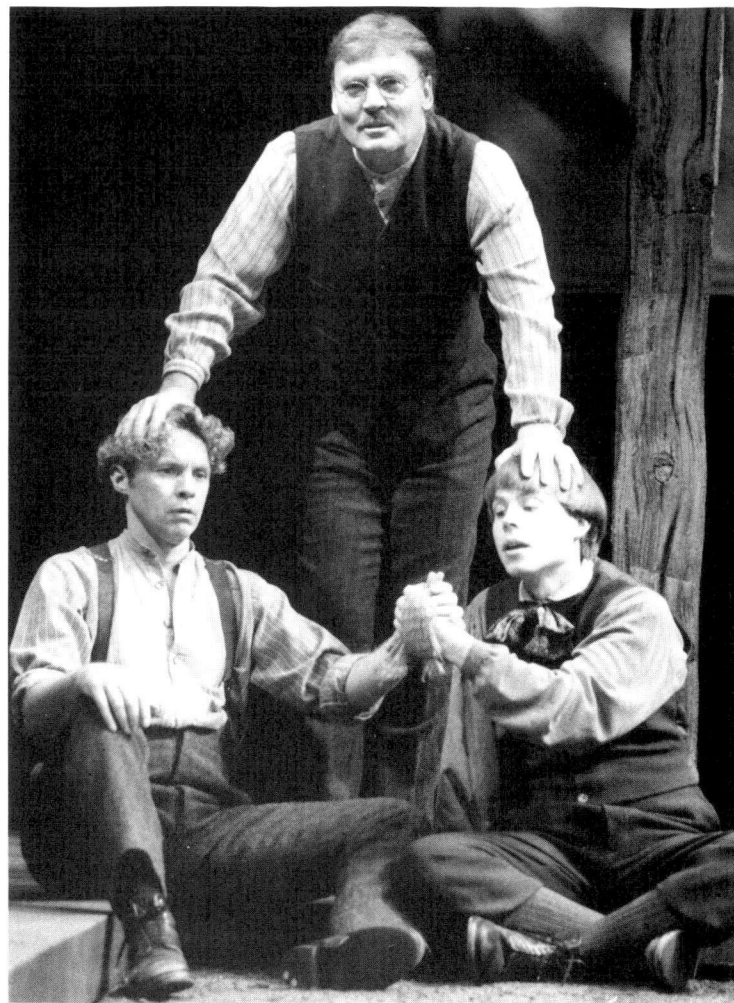
The Kentucky Cycle has been described as more of an event than a play. The six hour American epic contains nine miniplays which attempt to tell the history of the United States through seven generations of the Rowen family of the Cumberland region of Kentucky. It takes the viewer through the Revolution and Civil War to American life in the mid 1970's. Keach plays four members of the Rowen family, from a brutal father and homesteader before the revolution, to a depressed union official during the Nixon era. His first character is the overarching presence, a character of macho force, demonic glee, and utmost energy so awe-inspiring that his battered son says the only way he could be killed is if a mountain fell on him. The last Rowen is undone by doubt, destroyed by the



conscience his forebear so happily lacked. In between, Keach plays a sharecropper who plots vengeance on his landlord for more than four decades before finally regaining his homestead, and that man's son, who deals his birthright away to a slick-talking tale spinner for the Rockefeller energy interests.

Richard III

If you ask him to name his favorite performance, Keach will tell you that playing *Richard III* at the Shakespeare Theatre at the Folger in 1990 was probably the most gratifying theatrical experience he has ever had. Audiences are still scratching their heads wondering why he didn't hobble away from that performance with a Helen Hayes Award. Keach's lines were convincingly mastered for this role and so was Richard's deformity. Keach wore a leg brace (he has almost no cartilage in one leg, thanks to high school and college football), a lump



on his shoulder, a built-up boot, and a prosthetic hand. He also shaved his mustache to emphasize the scar that knifes his lip. "You might as well go with what you've got," Keach says.

Looking Ahead

So what's next for Stacy Keach? No one knows for sure, but there is always something that brings him back to the stage. As he explains, "I was in New York a few years ago, narrating a program for TV's *Arts & Entertainment* channel. One night, Rupert Holmes called and said he had written a thriller (*Solitary Confinement*) and would I look at it. I said sure, send me the script and I'll read it. 'No-no-no-no-no,' he said. 'this is a mystery. This script doesn't go out of my hands. You come to my office, I'll read it to you!' Well, wouldn't that intrigue you? So I went, and Rupert put on some music and proceeded to read all the parts. When that was over, I left and told my attorney, 'I'm going to do this show, fix up the contracts.' He did and I signed." ♦

Television and other media

While his heart is on the stage, most of Stacy Keach's recognition comes from television. In addition to the *Mike Hammer* series, he has starred in the Disney Channel's production of *Great Expectations*, *Body Bags* on Showtime, and more than 20 other television films. In 1988 Keach was an Emmy Award nominee and Golden-Globe Award winner for his title role in the CBS miniseries *Hemingway*.

Eerie Remembrances

The most eerie experience during the filming took place at Hemingway's old home in Ketchum, Idaho, according to Keach. "It was rather chilling to see the house undisturbed, with letters bearing 1961 postmarks still on his desk. It was weird doing that suicide scene, going through his steps that fateful morning. I laid down on his bed, walked to the kitchen to get some keys, went to the garage to pick up the gun, came up to the vestibule, closed the door and stuck the gun in my mouth. His granddaughter (actress-model) Margeaux Hemingway dropped by the set the night before we filmed the scene but found it too difficult to come back to watch it being filmed. The emotional pain was too strong for her."

The Big Screen

Stacy Keach has also made some 25 movies for the big screen since 1968, ranging from *The Long Riders* and *That Championship Season* to *The Squeeze*. But Brother Keach has not enjoyed the same success on the big screen as he has on stage. His film career sank in the 1970's after a string of unsuccessful films and forgettable roles such as his part in Cheech and Chong's *Up In Smoke*.

"Ultimately, Stacy Keach's versatility and range may have undercut his screen success," reads his entry in the International Directory of Films and Filmmakers. "Taken as a whole, the very diversity of his acting career clouds any singular impression left by his movie roles."

"I think that was truer at a certain state in his career than it is now," said director Arvin Brown, who went to Yale Drama School with Keach and has worked with him since. "Stacy was blessed and cursed with the best technical equipment of any actor in our class. He had

abilities more common among English actors than American. And because he was young, and his life experiences were not equal to his abilities, he sometimes appeared facile. He is not a personality actor, not a super-stud. That type of thing never interested him. Superstars tend to be people whose personalities are easily graspable. He's much more interested in submerging himself in a character."

Keach admits that Hollywood has never figured out how to use him properly. "I think the luck of the draw has a lot to do with it," he says. "It's hard. Making movies is not so much about actors as it is about movie stars. I'm an actor and that basically is the bottom line about that. I think."

Reconciling TV and The Stage

Today Stacy Keach is the host of the USA Network show, *Case Closed*, a "real life" detective show in the likeness of *COPS* and *Rescue 911*. He lives in Malibu, California with his wife, Polish actress Malgosia Tomassi, whom he met while doing a TV show. They have two young children and according to Keach, he is happier now than he has ever been. Along with a healthy marriage, loving family, and flourishing career, Keach says that spiritual values have become an important part of his life. "Religion, going to church, praying, and surrendering to a higher being," has given his life gratitude.

As an actor, Keach knows he is at the mercy of the elements. "That's an occupational hazard," he says. "I've found you have to create work for yourself. It's a fickle business but you can't sit back and wait for the phone to ring."

He calls his stage career the soul part of his work – the part that counts ultimately. But for the moment, it is commerce before art. Keach knows what television can do for his name recognition and his bank account. And a continuing series like *Mike Hammer* and *Case Closed* provides him with the cushion that allows him to return to the stage. ♦

Photos courtesy of Joan Marcus



THE PAST IS PROLOGUE...

100 Years Ago...

The Convention, hosted by the Kappa Chapter at Bowdoin, formally established November 24 as "Founders' Day" in honor of the Fraternity's founding on that date in 1833. The **Beta Theta Pi**, reporting on other fraternities, included the following information about our Fraternity: "Psi Upsilon cares not for friendship nor for literary excellence, but longs for those possessing a record of distinguished ancestors. It is not who you are, but from whom you have sprung, that answers the question that opens the heart of Psi Upsilon...If a student's heart is wrapped up in the history of his family, and he lives in the glories of the past rather than the future, let him by all means become a Psi U."

75 years ago...

In order to keep the Fraternity informed on the condition of the chapters, the Convention endorsed annual official chapter visitations by Executive Council members. The Convention recommended that a quarterly bulletin called **The DIAMOND** be published in order to establish a closer sense of relationship between the chapters. Fueled by a \$10,000 bequest from Charles J. Baumer, Psi '16, the Psi at Hamilton engaged in a capital campaign for the construction of a new chapter house. In the fall, the Tau hosted its annual Thanksgiving tea after the Penn-Cornell football game.

50 years ago...

The Executive Council offered congratulations to the alumni associations who "feed the hallowed vestal fires" and kept the fraternal spirit alive by publishing news bulletins in the midst of WWII: Psi U of Philadelphia, Puget Sound Alumni

Association, Omicron Alumni Association, and Psi Upsilon Alumni Association of Toronto. Amos Alonzo Stagg, Beta '88, aged 81, was named football coach of the year by his peers due to the outstanding performance of his team at the College of the Pacific (located in Stockton, California). Dick Barrett, Omicron '28, opened the major league baseball season with a well-pitched 4 to 1 victory for the Philadelphia Blue Jays over the Brooklyn Dodgers.

25 years ago...

The summer issue of **The DIAMOND** included an article highlighting the new Epsilon Omega chapter house. Citing a number of economic advantages, the Executive Council announced the relocation of the Fraternity's International Office from New York City to Ann Arbor, Michigan. A questionnaire included in **The DIAMOND** revealed the following about its average reader: "he is a 5'11", 176 lb., 51-year old executive with a BA from an eastern college. He earns \$15,800 a year and has been with his firm for 15.5 years. He's married, has 2.8 children, 8.6 credit cards, subscribes to 6.5 magazines, and owns his own home. He drives 1.7 automobiles and one of them is a Chevrolet. Two TV sets can be found in his home and one is color..."

10 years ago...

Thomas Wyman, Gamma' 51, Chairman, President, and Chief Executive Officer of CBS, Inc. received the Fraternity's Distinguished Alumnus Award at the New York Sesquicentennial Dinner. An article discussing the possibility of an eighth Psi Upsilon founder—William Henry Backus—appeared in **The DIAMOND**. The Phi Beta Chapter at the College of William and Mary was granted Psi Upsilon's 38th charter.

L E T T E R S

Congratulations to you upon the production of an unusually "reader friendly" edition of **The DIAMOND**! The new design and enhanced emphasis upon alumni affairs will, I am certain, be warmly received by all members of Psi Upsilon. I do so much appreciate receiving **The DIAMOND**. I do read it—I especially enjoyed the "Where Have Our Alumni Gone" article and the especially insightful "The Future is Ours" article.
Continued best wishes.

Interfraternally,

Patrick I. Brown, Ph.D., (Alpha Tau Omega) Associate Dean for Academic and Student Affairs, Marshall University, School of Medicine, Huntington, West Virginia

Having just read the recent issue of **The DIAMOND**, I am very enthusiastic about the graphic and format employed in the issue...keep up the good work.

Interfraternally,

William D. Jenkins, CFRE
Executive Vice President
The Phi Kappa Tau Foundation

Drop us a line and photo letting us know what you're doing...

Editor, **THE DIAMOND**
10293 N. Meridian St. #275
Indianapolis, IN 46290

FROM THE CHAPTERS

Lavin & Waldon, P.C. which engages in commercial law practice with an emphasis on complex litigation and transactional matters.

B. Blake Weathersby '94. is attending medical school at the University of Alabama in Birmingham, AL.

Hironori Yoshida '94. has moved to Los Angeles and is participating in Union Bank's 16 month commercial banking management training program.

PI Syracuse University

The Pi's community service project has operated very smoothly and has been very well received, thanks to the hard work of Brother **Todd Andrews '95.** Once a week a group of brothers go to the Christian Youth Organization to play basketball and work with children from 5 years old to 12. Brothers **Kurt Eggering '96,** **Christopher Meberg '96,** and **John Odell '96** have already participated. "It feels good knowing we can positively impact the lives of these kids," says Brother Eggering.

Brother **Charlie Sipkins '95** took a semester away from the Pi in order to study abroad in London where he is involved in an internship with the British Parliament.

Lester M. Andrew '79, still resides in Newport Beach, CA and heads Andrew Financial & Associates, as well as Cotton Club of Newport Beach - a line of 100% natural cotton preshrunk clothing for women and men.

James A. Cadwallader, Jr. '36, is a management counselor for SCORE (Service Corps of Retired Executives) helping small businesses on a voluntary basis and serves as treasurer of the Grand Canyon Synod of the Evangelical Lutheran Church in America. He resides in Tucson, AZ.

Jeffrey J. Daly '79, has been promoted to the rank of captain in the Syracuse (NY) Fire Department and continues to be one of the chief elected officers of the DeWitt Fire Department. He is the older brother of **Peter R. Daley '80,** who is president of a large central New York landscaping company.

Craig M. Davis '76 writes: "Pioneering in real estate has its pitfalls - I was burglarized **four** times last fall after moving into an old victorian house to rehab...can't win'em all!"

Eric D. Fredriksen '84, who received his MBA from Syracuse in 1987, is a financial analyst with Citicorp Investment Services in New York City.

Douglas E. Heussler '80, is still flying as a captain for US Air out of Washington, DC. Brother Heussler resides in Annapolis, MD with his wife and two children. He races sailboats year around.

G. Dene Kimball '59, the long-time secretary of the Psi Upsilon Association of Elmira, NY, keeps quite active with his company, RKB Enterprises. This

firm is a hardware distribution business headquartered in the southern tier and serves the northeastern United States.

Irwin M. Kurashige '52, resides in Honolulu, HI and sells commercial, residential, and investment properties for a local realty company.

Joseph S. Loson '83, is the co-owner/treasurer and manager of the newly-built Big M Supermarket in Lyons, NY.

Russell J. Maxwell '88, has been selected by the Syracuse, NY Common Council and approved to serve as the new city auditor. Brother Maxwell is a retirement benefits and estate planner locally for the Connecticut Mutual Life Insurance Company and is chapter advisor to the Pi.

Morris S. Weeden '41, retired vice chairman of Morton Thiokol and honorary Syracuse University trustee, was recently recognized in the **Syracuse University Magazine** for his dedication to and financial support of that school's *Centro de Estudios Hispanicos* (Center for Hispanic Studies). Created in 1945, the center had been acclaimed as one of the most important centers for the study of Hispanic culture in the United States but had fallen on hard financial times recently. Brother Weeden explains his support: "I think truly educated people are able to speak more than their own language, or at least understand a bit of another." The center has

FROM THE CHAPTERS

been renamed the Morris and Jane Weeden *Centro de Estudios Hispanicos*.

CHI Cornell University

The depth of the Chi Chapter lies in its diversity. The fifty-two undergraduate brothers of the Chi are involved in activities ranging from the Interfraternity Council to varsity athletics, and from singing troops to administrative strategic task forces. At the Greek Awards Night in April, the IFC presented the Chi with an award for having the best alumni relations program at Cornell. The Chi was recognized as an "outstanding chapter" by the Cornell IFC. Individually **Michael Bergelson '95** was honored as one of the outstanding Greek members at Cornell for the 1993-1994 year.

In varsity swimming, Brother **Pieter Hommen '95** set a new Cornell record for the 100-meter back stroke at the Eastern Regionals in early March.

Kees M. Elmes '92, is living in Glencoe, IL where he is engaged in cancer and arthritis research at Rush-Presbyterian-St. Luke's Medical Center. Brother Elmes rows at the Lincoln Park Boat Club in Chicago and is applying to medical schools in the midwest and New England.

Michael G. Medzigan '81, is currently president of Cohen Realty Services in Chicago and lives in Lincolnshire, IL with his wife, Michele and two sons, Brendan, 3 and Connor, 1.

BETA BETA Trinity College

In the fall of 1992, the Trustees of Trinity College adopted a policy that requires all of the Greek organizations on campus to be co-ed by the fall of 1995. Although the administration has provided the fraternities and sororities with some additional time to comply with the mandate, this is contingent upon the fraternities and sororities making strides toward coeducation in the fall of 1994. Therefore, to comply with the Trustees' directives, the brothers of the Beta Beta have formed the Owl Society, which will commence in the fall. Essentially, the Owl Society will be a co-ed eating and social club with the goal of introducing women to Psi Upsilon. Members of the Owl Society will eat a majority of their meals at the house and will be granted full social privileges. The brotherhood is firmly committed to making a co-ed Beta Beta work. The establishment of the Owl Society is a positive step toward the successful incorporation of women into the Beta Beta.

Over the course of the past year, the chapter has realized the importance of improving the visual appearance of the house. As a result of some financial support from the Colt Trust (the Beta Beta alumni organization), the brothers renovated the basement and had significant work done on the floor and chapter meeting room. These projects were made possible through the efforts of Brother **Rick Kozak '89**, who owns a construction company and offered

his services at a great discount. As house manager, **Matt Marra '95** was also instrumental in the success of these projects. The Beta Beta continues to provide leadership in athletics as seven brothers were elected captains of their respective sports. Individually, **Chris Golini '94**, was presented with the distinguished leader award by the hockey team and **Mark Kastrud '94** was named the MVP of the lacrosse team and was honored by being included on the All-ECAC lacrosse team.

Andrew M. Aiken '83, is a marketing manager with Hines Interests Limited Partnership in Chicago. He and his wife, Khooshe, have two children.

Joseph M. Aurilio '94, is a financial consultant for the Leaton Financial Group in Stamford, CT. He continues to play rugby for a local club.

R. David Ells '91, recently relocated to Chicago and is working for Smith-Barney as an institutional mortgage salesman.

Andrew L. Newcomb '91, is beginning his third year at Wolf, Webb, Burk & Campbell, Inc. (investment counselors) in Philadelphia, PA. He currently is an analyst and assistant portfolio manager. Brother Newcomb often sees the following Beta Beta brothers in Philadelphia: **Blair Keller '93**, **Richard Getzoff '92**, and **Stephen Burgess '92**.

FROM THE CHAPTERS

ETA

Lehigh University

Over the year, the Eta initiated 19 men into Psi Upsilon – seven sophomores in the fall and twelve freshmen in the spring. Because of this successful recruitment program, the chapter was awarded the membership recruitment award by Lehigh University. The Eta was awarded the Greek Week Spirit Award based on involvement in the events.

The Goodale Literary Association (the Eta's alumni corporation) recently elected **Jeff Gendel '89** to serve as president. Brother Gendel will replace **Phil Gaffreau '84**, who just successfully finished six years as president.

The chapter has also made some major purchases, including new furniture for the living room and dining room.

Robert E. Voeks, III '82, has enrolled in a four-year Ph.D program in finance at the University of Georgia. Following graduation from Lehigh, where he majored in computer engineering, Brother Voeks started his own business in Marlton, NJ. He earned his MBA from William & Mary in May 1993.

Peter A. Weismantle '72, after spending 6 years in London, is back in Chicago working for the architectural firm of Skidmore, Owings, & Merrill. He was named associate partner last fall.

TAU

University of Pennsylvania

Jonathan S. Blue '89, calls Louisville, KY home even though

he rarely spends any time there. He travels 4-5 days per week for business and says he enjoys every minute of it.

William Dignan III '39, retired from the Pittsburgh National Bank 25 years ago. He currently volunteers 20 hours per week working in the Medical Records department at the York (ME) Hospital. Brother Dignan writes: "This work is enjoyable and I certainly feel better with the companionship of my co-workers!"

Samuel C. Dysart '50, has been retired for several years and keeps busy mostly engaging in volunteer activities. He and his wife, Vee, have 5 children and 3 grandchildren.

Richard M. Gibson '60, operates charters on the Chesapeake Bay aboard his sailing yacht, **Ariadne**. He recently completed his first novel, parts of which are set at Penn in the late '50s.

Steven J. Kelly '88, was ordained to the Episcopal Deaconate and graduated from the Nashotah House Seminary in Wisconsin in May. He began as an assistant at Church of the Good Shepherd in Rosemont, PA on June 1, 1994. He is engaged to be married on November 5th to Jennifer Cook and will be ordained to the Episcopal Priesthood in late November.

Chadwick C. Nehrt '76, has been teaching international business courses at the Univer-

sity of Texas at Dallas since January 1993. His wife, Ursula, will graduate from her Physician's Assistant program in August 1995. Their son Ross, 6, keeps the couple busy with soccer and Spenser, 3, just keeps them busy.

Keith B. Olsen '84, works in investment banking at Bankers Trust in Chicago and lives in a big place with his wife of two years, Denise Harper. Brother Olsen graduated from the Kellogg Graduate School of Management at Northwestern. He invites all to look him up when in Chicago.

Stricker C. Sanford IV '85, resigned from active duty in the U.S. Navy on March 31, 1994. He currently is working as the Hampton Roads, VA field director for the "Jim Miller for U.S. Senate" campaign.

Frank E. Vaughn '51, retired president of the Hoover Group and executive vice president of Maytag Corporation, has been selected to serve as interim dean of the new joint international business graduate school of Kent State University, the University of Akron, Cleveland State University, and Youngstown State University in Northeast Ohio.

William H. Walker III '69, writes that **Inez Fortson**, who worked as cook for the Tau for more than 25 years from the end of WWII until 1972, has moved from her home in Philadelphia to a nursing home in Germantown. A true living legend, she is noted for her reputation as an academic and romance

FROM THE CHAPTERS

counselor, as well as match-maker. Beloved and respected by the brothers, Ms. Fortson was made an honorary brother when she retired. She is suffering from a host of medical problems and would greatly appreciate hearing from her friends in Psi Upsilon. Her address is: Stapeley in Germantown, Personal Care Unit, Room 127, 6300 Green Street, Philadelphia, PA 19144. If any brothers wish to visit her, they should call the nursing home at (215) 438-5629.

EPSILON University of California- Berkeley

Upon returning from winter break in January, the Epsilon was honored with the distinction of having a top five GPA among Berkeley's fraternities. This honor once again placed Psi U above the men's university average and the men's fraternity average. Academic success remains a strong commitment of the brothers.

Brother **Craig Chiang '95** was elected to the university's Inter-Fraternity Council as the programming chair. He has since put together seminars on issues relating to both hazing and alcohol awareness for all fraternities and sororities. Brother **Hugo Yon '95** carries on the Cal football tradition while Brother **Ian Bell '96** furthers his musical talent as a member of both the University Symphony and Cal Band. Brother **Pooh Mayo '95** was selected to be a Resident Assistant in the campus dormitories next year.

OMICRON University of Illinois

Joseph A. Barr '83, after 10 years at Arthur Andersen & Company in Chicago, has joined the Safety-Kleen Corporation in Elgin, IL as Director of Internal Audit and Financial Planning. Brother Barr and his wife, Lari Ann, who live in Elmhurst, IL with their two-year old son, Andrew, are expecting their second child in July.

William S. Hansen '90, is an assistant vice-president for commercial lending with the First National Bank of Morton Grove, IL.

Michael R. Halvorson '87, accepted a position as North American Product Marketing Manager in the opto electronics division of Rohm Electronics Corporation in January 1993. The Japanese company is a world leading producer of semiconductors and maintains its US headquarters in Nashville, TN.

Alan C. Hultman '49, still practices law in Downer's Grove, IL. Brother Hultman spends his winters in Sarasota, FL.

Thomas L. Phillips '85, former Assistant Executive Director of Psi Upsilon, has been appointed Executive Vice President of the Burlington County (NJ) Association of Realtors. He had previously served as Director of Member Services for the organization. Brother Phillips currently resides in Trenton, NJ.

DELTA DELTA Williams College

Howard E. Green, Jr. '50, retired from the publishing business in January 1992 and moved to Naples, FL in November 1993. Brother Green's daughter and son, both SMU graduates, live in Dallas, where he spent the Christmas holiday. He recently visited **Jay D. Green, Omega '26**, (his uncle) who is retired vice-chairman of the Henry S. Miller Company.

THETA THETA University of Washington

Brother **Mark Schneider '95** secured his position on the university's crew team's first boat. Schneider, who the UW Daily called "the purest athlete on the team," is ready to lead UW to a national title. But maybe the Daily is biased - its new news editor is **Jonathan Martin '95**.

When you think Seattle, you think music, and the Theta Theta is about to make a contribution of its own. Look for "Spirithouse" in your local record store, made up of brothers **Dave Castillo '95**, **Tom Buenadonna '96**, **Ken Ikeda '95**, and **Mac Pora '95**.

EPSILON PHI McGill University

This fall brought with it four new brothers. As with last year, the Epsilon Phi did not have a house to centralize the chapter's activities. During the fall this caused some problems as it took more effort than usual to organize the chapter's functions. By January all had been settled and rush took place.

A house committee has been created for the fall of '94. As it now

FROM THE CHAPTERS

stands, four of the brothers and one of the pledges are committed to living in it. This will alleviate the difficulties of bringing everyone together in the fall.

EPSILON NU

Michigan State University

The Epsilon Nu celebrated the devotion of a true friend, Myldred Lindley, who retired as the chapter's cook of close to 18 years.

The spring Mother's Day was a tremendous success. The Mother's Club is spearheading a drive to raise funds for new furniture and carpeting.

Mark J. Hedstrom '91

works for a Japanese trading firm in Chicago.

EPSILON OMEGA

Northwestern University

Ten brothers play on the varsity soccer team. Brother **Roger Williams '94** went to the NCAAs for wrestling, and three more brothers are members of the lacrosse team. Numerous brothers have contributed to Northwestern's Greek community. Five have positions on the Interfraternity Council. The Epsilon Omega has contributed to the Evanston community in general, too, by participating in the school-wide "Dance Marathon" philanthropy and by hosting the "Rock Against AIDS" benefit in the spring, which raised money for children with AIDS.

Thomas L. Aldrich '90, is a partner in the Chicago law firm of Schiff, Hardin & Waite. As two of his three children, Jennifer and Stephanie, approach college age,

they have expressed interest in attending Dad's alma mater. Brother Aldrich quips: "I just hope I can afford it!"

Aristeidie M. Diveris '81.

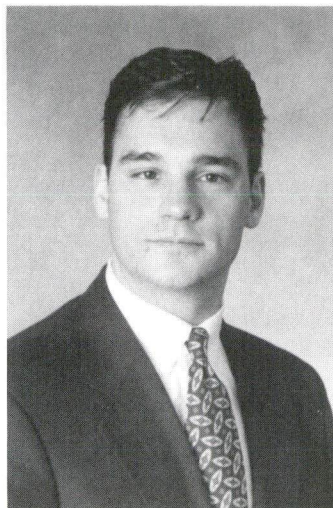
is an anesthesiologist and director of acute pain management at Lake Forest (IL) Hospital. His wife, Amelia M. Bartholomew, is a transplantation surgeon.

Jack Lageschulte '59.

is semi-retired and spends 2/3 of the winter skiing in Colorado. As he is divorced and both of his children have graduated from college, Brother Lageschulte writes: "Life is fun but boring. I'm looking for a challenge..."

Joseph M. Nogueira '87.

is a third-year resident in internal medicine at Northwestern Memorial Hospital in Chicago.



Peter C. St. Aubin '89, was one of four people named to the Rotary District 6410 Group Study exchange team to New Zealand this spring. The purpose of the

program, funded by the Rotary Foundation of Rotary International, is to encourage friendship and understanding between the peoples of the world. Staying in Rotarian homes, the team enjoyed a five week visit to New Zealand which is intended to give them an in-depth understanding of the land. Brother St. Aubin is a private banker at the Wilmette, IL office of the First National Bank of Chicago.

GAMMA TAU

Georgia Institute of Technology

The impending 1996 Olympic Games in Atlanta has provided a great opportunity for the growth of both the university and the fraternity system. The chapter has been in the process of buying a new house, in a better location, on fraternity row.

The chapter participated in two successful philanthropy projects this quarter. One was an interfraternity effort to raise money for leukemia, and the other was a weekend spent fixing up a church.

CHI DELTA

Duke University

The brothers of the Chi Delta have made some great achievements this year, especially in the area of community service. This year, the chapter helped clean up and take care of a park on the Eno River in Durham and cleaned wheelchairs for a Durham home for the elderly. Psi U has been involved with the Gleaning Network - a group which salvages food left behind during the harvest from local fields. The food is then donated to local soup kitchens and homeless shelters. The chapter

FROM THE CHAPTERS

has also been involved with the Big Brother program in the local Durham Community.

Finally, the Chi Delta finds itself in a very volatile environment at Duke. With new alcohol policies, new social policies, anti-fraternity sentiment growing, and various campus groups targeting fraternities for various social problems, the Chi Delta faces many new changes. The chapter has anticipated this change by leading the campus in ideals such as a social scene not based on alcohol. Consequently, Psi U has been recognized as an "outstanding living group" the past two years.



Phi Beta brothers enjoy Founder's Day 1994

PHI BETA **College of William & Mary**

The Phi Beta has had a successful 10th anniversary year. A weekend of celebration in April included a lunchtime barbecue and an elegant reception at the College's alumni house. Executive Council President **Charles M. Hall, Nu Alpha '71** and a founding brother, **Bill Hefele '86**, addressed the assembled undergraduates and alumni.

In addition, the Phi Beta joined up with WCWM, the radio station of the College, to host an

"alternative band night" to benefit the Peninsula AIDS Foundation and the National Epileptic Foundation. Three brothers - **Matthew Devries '94**, **Rick Mansfield '94**, and **Jason Gebhardt '94** - were initiated into the Alpha Chapter of Phi Beta Kappa.

Stephen D. Culberson '86, is living in Chicago where he works as an ecologist for TAMS Consulting. He often runs into **Dennis McEleney '86**, who is an attorney in the city.

Peter J. Enko '86, and his wife, Jane, are the proud parents

of Daniel Alexander who was born in March. Now living in Richmond, VA where Jane practices law, Brother Enko graduated from the University of Virginia law school in May 1993.

BETA KAPPA **Washington State University**

With a cumulative average of 3.07, the Beta Kappa again captured the number one position for grades among the 27 fraternities at WSU. Psi U had the highest GPA ever for a WSU fraternity.

BETA ALPHA **Miami University**

Successful community service projects have included trips to ReSTOC, a low-income area in Cincinnati, to help rebuild low-rent housing, and the ever-popular "Psi U Unplugged" coffeehouse offering coffee and atmosphere to the Miami community in order to benefit a local Oxford free-store.

While obviously active in the Oxford community the brothers of the Beta Alpha have kept focused on academics as well, placing first overall in Greek Men's GPA for the first semester and winning Miami University's Chapter Academic Excellence Award. The chapter also won the Dean's Achievement Award given to the fraternity with the highest per-capita members on the Dean's List.

Chadwick J. Fleck '94, entered the Peace Corps in September for two years. He will teach science in Nepal.

Jeffrey L. Glavan '91, began a one-year assignment in London for Andersen Consulting in June.

John G. Kopera '92, recently began a new position with Andersen Consulting in Chicago.

David A. Wright '93, is currently employed at Riverside Hospital in Columbus, OH.

Whither Psi U?

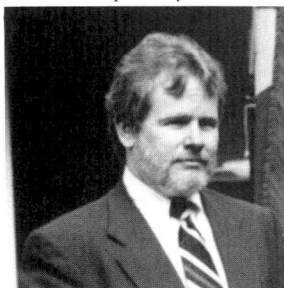
by Mark A. Williams, Phi '76, Executive Director

FROM
THE
STAFF

A couple of years ago we received an intriguing letter from a Psi U alumnus. He felt that since Psi U is no longer capable of being the elite, exclusive organization it was in the early 20th century, the Executive Council should not take any steps to support struggling chapters nor should it take any steps to add new chapters to the rolls. As chapters failed, he felt that Psi U should be allowed to wither on the vine and, in his words, "to die a natural death."

Psi Upsilon at the turn of the 20th century was indeed a remarkable organization. The list of that era's world leaders from our ranks is unmatched by any organization, fraternal or otherwise. Most of our chapters built the houses we occupy today during that period.

Nevertheless in the 1990's the world won't tolerate an organization whose primary reason for being is elitism and exclusivity. Yet can



we still be selective without being elitist? Is the timing right for Psi Upsilon to engage in a campaign of aggressive expansion in the face of a bear market for fraternities?

Well, we really don't have any choice. Psi Upsilon must pursue expansion internally and externally to become economically viable in the years to come. Chuck Hall described

earlier in these pages Psi U's plans to pursue internal expansion through a chapter standards program which will set minimum expectations for chapter size. We are also engaged in an aggressive effort to add new chapters to the rolls.

Psi Upsilon has had thirty active chapters (give or take a chapter here or there) throughout most of the 20th century. There was a time when an international fraternity with 30 chapters could do quite well; however, in 1994 that is no longer the case. The changing responsibilities of the international organization simply makes that impossible.

Today the role of the International Fraternity has greatly expanded in a way unimaginable 20 or 30 years ago. Our host institutions expect Psi Upsilon to send chapter consultants (sometimes on demand) to work with the chapters, expect formal leadership training and chapter management programming, expect master liability insurance coverage and a risk management program, and a parent organization to call upon for immediate assistance in the event something bad happens.

In the past these things, if done at all, were done by local alumni volunteers. The demographers tell us that today the average male professional has less than 17 hours of discretionary time each week (his spouse has less than 14). As a result our local alumni groups now count on the International Fraternity to work with the undergraduate chapter, to assist in communicating with our members, to help raise money, to make affordable insurance available, and to generate support from alumni who may not return to campus because of geographical considerations.

Our chapters, our host institutions, and our alumni increasingly look to the fraternity's professional staff for support and assistance. Most fraternities fund that support and assistance with revenues from the undergraduate chapters. In fact 62% of the average fraternity's operating budget comes from undergraduate fees and taxes. (By the

way, the average fraternity today has 103 chapters). In Psi U less than one third of our operating budget comes from the undergraduate chapters. The balance has come from alumni contributions which can be very unpredictable depending on all the various factors effecting discretionary spending.

Everything possible (including relocation) has been done to streamline the International Office operations. In 1990, 8 full time employees drew pay checks from Psi Upsilon. Today that number is 5. We operate without any clerical staff and through the consolidation of the Fraternity and Foundation administrative operations as well as the creation of in-house data, accounting, and design systems, we do much more with much less.

We have a right to be proud that Psi U is or has been represented at almost all of the most selective schools in North America. Unfortunately the 1994 reality is that most of the top schools barely tolerate the fraternities they have now and are certainly not looking to add any new ones.

Creating a new chapter capable of long term survival is a very difficult process requiring 2-3 years of intensive effort and an investment of around \$10,000 in staff time, travel and resources. While difficult, expansion at good schools is by no means impossible.

Keep in mind that the definition of a "good school" is relative to the times. There was a day when "good school" meant north of Philadelphia and east of the Alleghenies. In the past an unfortunate provincialism prevented Psi U from seeing the potential of some of today's most important institutions of higher learning. Earlier this century, schools like UCLA, Stanford and MIT were denied chapters after many years of petitioning.

Today that unfortunate provincialism is sometimes expressed in a statement like "I've never heard of that school." A case in point is Mary Washington College, a highly selective, liberal arts school in Fredericksburg, Virginia. Barron's Profile of American Colleges ranks it "Highly Competitive" and in the company of Columbia, Georgia Tech, Hamilton, Kenyon, Miami, NYU, RPI, Syracuse, Trinity, Berkeley, Illinois, Michigan, and Rochester.

Mary Washington College has no fraternities and the administration doesn't want any. Nevertheless, as a state supported school, the Mary Washington administration can't prevent its students from exercising their first amendment rights of free association. Therefore taking Psi U to Mary Washington College is a risky proposition but it is a risk which may return very big rewards if we can establish that Psi U is an important contributor to the Mary Washington College and Fredericksburg communities.

Growing is moving ahead. Stand still and Psi U falls behind. Today we are working to reactivate the Delta (NYU) and Tau (Penn) Chapters and in addition to Mary Washington College we are working to establish new chapters at George Washington University and Millersville University in Pennsylvania.

We don't believe that Psi U should be allowed to die a natural death and by adding new chapters and making our existing chapters stronger we will prevent Psi U from withering on the vine. ♦

CALENDAR OF EVENTS

Monthly Psi Upsilon of Philadelphia luncheon

(fourth Tuesday of each month)
Philadelphia Racquet Club
215 South 16th Street
Chuck Hillis, Tau '76
(215) 241-1958

August 13, 1994

Epsilon Omega Alumni Corporation (Northwestern)
Annual Chicagoland Golf Outing & Banquet
Chevy Chase Golf Course, Wheeling, Illinois
Michael Stummer, Epsilon Omega '89
(708) 581-0400

November 5, 1994

Phi Beta Alumni Association (William & Mary)
Fall Meeting and Elections
Bedford Lydon, Phi Beta '92
(908) 273-1979

November 12, 1994

Executive Council Meeting &
Special Meeting of Foundation Directors
Boston, Massachusetts
Mark Williams, Phi '76
(317) 571-1833

November 12, 1994

Installation Ceremony and Banquet for
Incoming Executive Council President
Boston, Massachusetts
Mark Williams, Phi '76
(317) 571-1833

November 1994

Psi Upsilon of Philadelphia (Pennsylvania)
Founders' Luncheon
Philadelphia Union League
Philip C. Timon, Tau '86
(215) 388-5920

December 2, 1994

Houston Area Alumni Reception
Mark A. Williams, Phi '76
(317) 571-1833
